



Bonanza Court, 3 Bonham Road From \$6,500 up



Private Accommodation for Hire – Ideal for HKU Students

Looking for a comfortable, convenient, and prestigious place to live during your studies at HKU? Look no further!

About the Property - **Bonanza Court**

- **Low-density, low-rise building** – Only two flats per floor, ensuring privacy and tranquility.
- **600 sq. ft. flat** – Perfect for shared living with 3 bedrooms, 1 living room, 1 dining room, and 1 toilet/bathroom.
- **High-class residential area** – Located in a prestigious, expatriate-friendly neighborhood.
- **Ideal location** – Just a 15-minute walk to HKU campus and 6 minutes to the MTR station.
- **Surrounded by greenery** – Plenty of trees and a peaceful environment.
- **Nice view** – Harbour view on high floors and airy view on low floors

- **Value for money** – Affordable shared living in a high-end area where nearby flats sell for over HKD 100 million!

Lifestyle Perks

- Lots of restaurants and cafes nearby for dining out or grabbing a quick bite.
- High-class amenities and a peaceful, green environment.



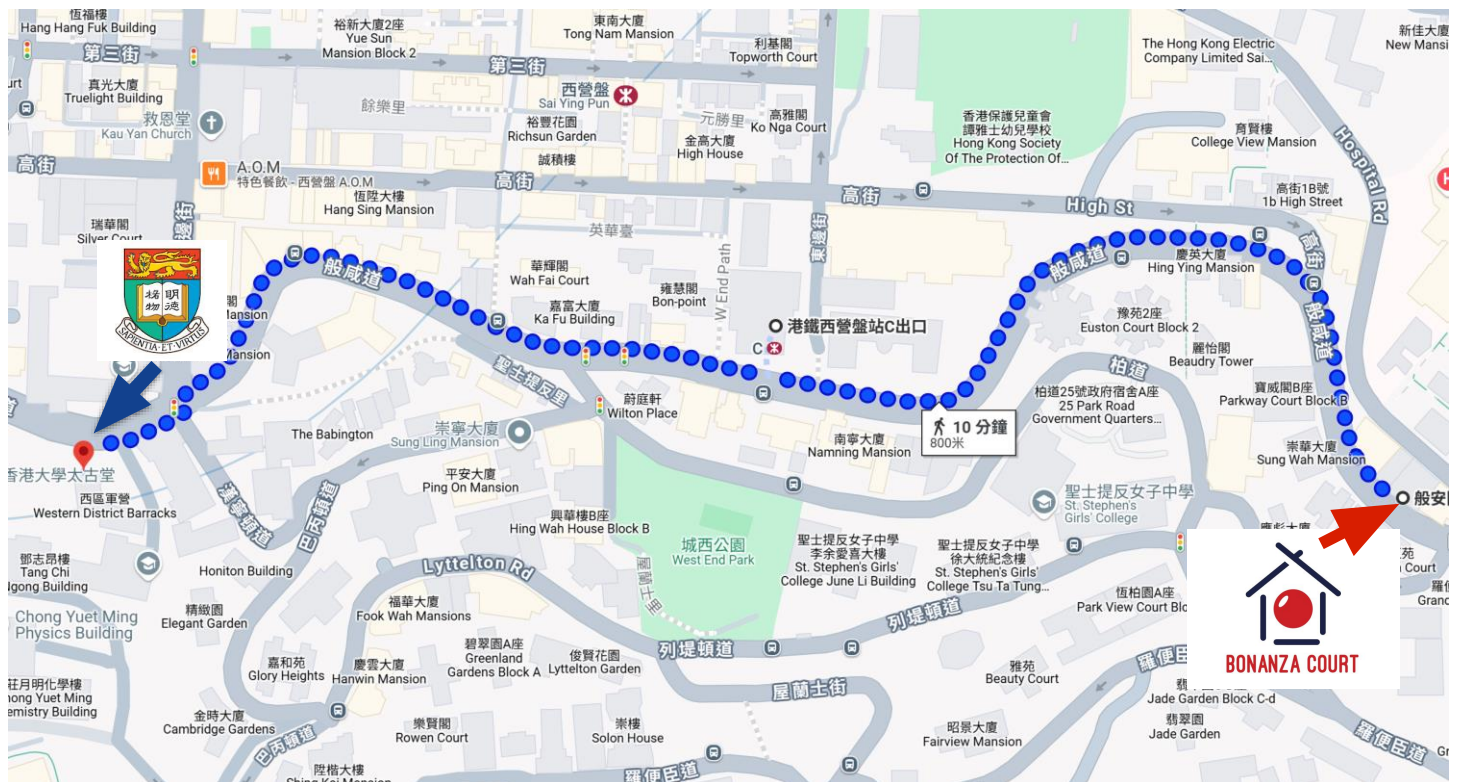
Email:  BCHKU@outlook.com

Whatsapp/Mobile: +852 98423373

Office: +852 31017873

Distance to Key Locations

- **HKU Main Campus:** 15 minutes walking distance. Flat walk, no slope.
- **MTR Station:** 6 minutes walking distance.



Why Choose This Location?

- **Convenient** – Close to HKU campus, MTR, and numerous restaurants.
- **Safe and friendly** – A good neighborhood with a strong sense of community.
- **Expatriate area** – Perfect for international students.

Accessibility

- 🚶 6 min by walk to Sai Ying Pun MTR 4 min to Central. 6 min to Admiralty
- 🛒 5 min by walk to High Street Restaurants & Supermarket
- Daily essentials and dining options nearby
- 12 min by walk to **SOHO 苏豪** via **Central Escalator**
- 15 min by walk to **Lan Kwai Fong**
- 20 min by MTR to **Ocean Park**
- 15 min by MTR to **Causeway Bay**
- 20 min by MTR to **Mongkok**
- 30 min by taxi to **HK Airport**, 50 min by Airport Express
- 50 min by MTR to **Hong Kong Disneyland**

- 🚢 **Travel to Mainland**
- Direct access to Greater Bay Area
- 15min by walk to **Shun Tak Macau /Zhuhai Ferry Terminal** 🚢
- 1 hour by ferry to Zhuhai
- 1 hour by car to Zhuhai
- 55 min by MTR to **Lo Wu**



Whatsapp/Mobile:

+852 98423373

Office:

+852 31017873



Comfy Living, Shared Spaces – Your Perfect Home Awaits!

Enjoy **premium co-sharing** units in a 14-storey building with only **2 units per floor**, offering privacy, comfort, and modern living in a prestigious location. **FREE WIFI PROVIDED**. Perfect for undergraduate or postgraduate students.

Room Types

- **600-617 sq.ft** per unit| 3 Bedrooms, 1 Dinning room, 1 Equipped Kitchen, 1 Bathroom.
- **Fully Furnished:** Bed, Study Desk, Wardrobe, Curtain.
- **Ideal for flexible co-renting** with group of 3 – 5 Tenants. **Students form groups themselves.**
- **Low-density, low-rise building** – Only two flats per floor, ensuring privacy and tranquility.



Email:  BCHKU@outlook.com

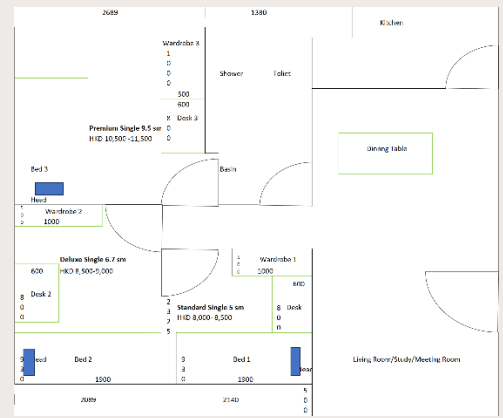
Whatsapp/Mobile: +852 98423373

Office: +852 31017873

Option A

-3 Students co-rent \$29,000

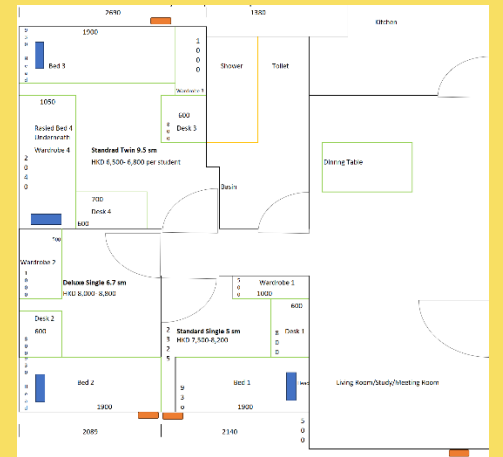
Standard Single 55 sft: HKD 8,500+
 Deluxe Single 73 sft: HKD 9,000+
 Premium Single 100 sft: HKD 11,500+
 (Suggested Splitting of costs, for reference)



Option B

-4 Students co-rent \$30,600

Standard Single 55 sft: HKD 8,200+
 Deluxe Single 73 sft: HKD 8,800+
 Standard Twin 100 sft: HKD 6,800+ per student
 (Suggested Splitting of costs, for reference)



 **No Agency Commission Fee!**
 **Management Fee, Government Rent and Rates are included!**



Whatsapp/Mobile:

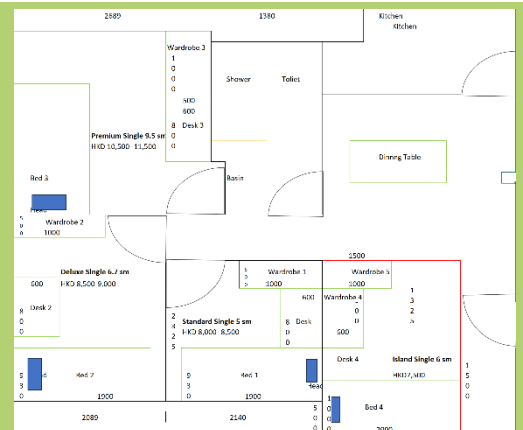
+852 98423373

Office: +852 31017873

Option C

-4 Students co-rent \$34,500

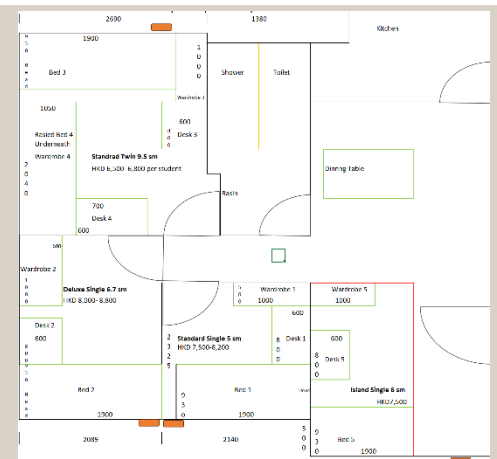
Standard Single 55 sft: HKD 8,000+
 Deluxe Single 73 sft: HKD 8,500+
 Premium Single 100 sft: HKD 10,500+
 Island Single 65 sft: HKD 7,500+
 (Suggested Splitting of costs, for reference)



Option D

-5 Students co-rent \$36,000




Standard Single 55 sft: HKD 7,500+
 Deluxe Single 73 sft: HKD 8,000+
 Standard Twin 100 sft: HKD 6,500+ per student
 Island Single 65 sft: HKD 7,500+
 (Suggested Splitting of costs, for reference)



*Area quoted above are approximated figures for reference only.

LIMITED TIME OFFER!



-  **Early Bird:** Get 3% off monthly rent if you sign & start rental before May 1, 2025.
-  **Prepay & Save:** 3% off for paying 12 months upfront.
-  **Refer & Earn:** 5% rebate for successful tenant referrals of another flat.



"Live.



Relax.



Belong."

Facilities at no additional cost:

Free WIFI | Free Cleaning Once a week |
Refrigerator | Washing Machine | Microwave |
Gas Hob | Air conditioners |
Building Entrance Access Card System

Points to note:

- Minimum leasing period 12 months
- 1-month advanced notice for quitting
- 2-month Deposits and 1-month advanced rental required.
- Utilities Water, Electricity, Gas are not included.
- Stamp Duty and Tenancy Agreement administration Fee Required (around \$ 600 per student)



 BCHKU@outlook.com

Whatsapp/Mobile:

+852 98423373

Office:

+852 31017873