



cedars
Centre of Development and Resources for Students
The University of Hong Kong
香港大學學生發展及資源中心

A GLIMPSE OF STUDENT LIFE @ HKU

**FOR PROSPECTIVE
STUDENTS 2021-22**





Contents

- 3 Welcome
- 4 Must-know Facts of HKU
- 5 Introducing the Centre of Development and Resources for Students (CEDARS)
- 6 Academic and Admission Matters
- 7 Finances
- 10 Students Under 18
- 11 Equality, Diversity and Sustainability
- 13 Smoke-free Campus
- 14 Campus Facilities
- 23 Student Support and Resources
- 27 Student Life @HKU
- 29 Crisis and Emergency
- 33 Information for Non-local Students
- 39 Campus Maps



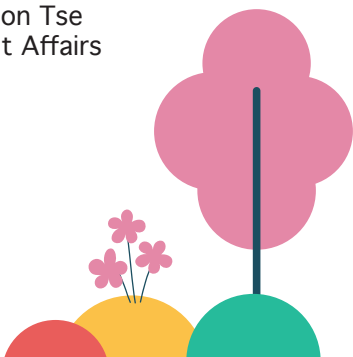
While you are considering to study at The University of Hong Kong (HKU), we would like to provide you with more information about our university – the oldest of all universities in a unique territory.

HKU considers university education as a total learning experience and HKU has much to offer, in terms of academic achievement, personal development and cultural exposure. Our goal is to help students acquire the experience that can benefit you lifelong. Towards this goal, the Centre of Development and Resources for Students (CEDARS) together with other units provide all the support that one may need. You are welcome to find out more about the wide range of services and the varied resources available on campus. Even before you become a student here, this booklet will provide a glimpse of how life is like being a student at HKU.

We look forward to working with you to facilitate developing the rewarding total experience.

Professor Samson Tse
Dean of Student Affairs

October 2020





Must-know Facts of HKU

Founded in 1911, HKU is the oldest tertiary institution in Hong Kong. With a population of over 30,000 students, there are over 10,000 overseas students enrolled from about 105 countries in 2019/20.

HKU is a comprehensive university. It offers a wide spectrum of high quality programmes with an emphasis on encouraging a flexible approach to studies.

HKU received well-deserved recognition from prestigious global institutions. It ranked 1st in Hong Kong¹, 22nd in the World², 1st in Hong Kong for Best Global Universities³ and 2nd most International University in the World⁴.

¹ THE World University Rankings 2021

² QS World University Rankings 2021

³ US News 2021

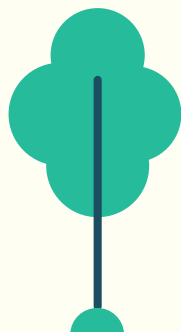
⁴ THE Most International Universities in the World 2021

HKU prides itself on its international community of students and staff, providing a vibrant, colourful campus life for everyone. Students can enjoy an international experience not just within the university but also through HKU's myriad of worldwide exchange programmes, summer schools and international internship opportunities.

Learn more: www.hku.hk



Introducing the Centre of Development and Resources for Students (CEDARS)



The Centre of Development and Resources for Students (CEDARS) is committed to fostering an intellectually stimulating and culturally diverse campus to enrich students' total learning experience at HKU. Bridging the boundary between classroom and the world, we provide support services, resources and educational programmes to facilitate students' learning.

Cedars are ornamental trees with durably scented wood and evergreen leaves; they signify growth, development and shelter which are the goals of our work for students. At CEDARS, we hope to nurture students with a durable scent of the intellect so that they are forever young and fresh.

As the one-stop student service and resources centre, and co-curricular learning hub, CEDARS comprises of three Sections and two Programme Teams to provide comprehensive student services such as housing, financial support, employment preparation, professional counselling, SEN support as well as a spectrum of co-curricular learning and service opportunities.

- Campus Life Section
- Careers and Placement Section
- Counselling and Person Enrichment Section
- Student Development Team
- General Education Team



CEDARS

Website: www.cedars.hku.hk

Facebook: www.facebook.com/hku.cedars

Instagram: www.instagram.com/hku.cedars

YouTube Channel: www.youtube.com/hkucedars-official

Academic and Admission Matters

There are a variety of courses and programmes for students to enjoy an academic experience at HKU. Apart from studies, students gain internship experiences, personal and professional networks, and exciting exposure to the vibrant city life. Students interested in applying to our programmes can obtain detailed information at the following websites:

1. **Undergraduate programmes:** www.aal.hku.hk/admissions
2. **Taught postgraduate programmes:** www.hku.hk/tpg
3. **Summer programmes:** www.summerinstitute.hku.hk
4. **Others – Exchange and visiting programmes:** www.aal.hku.hk/studyabroad

Admissions Office - Admissions and Academic Liaison Section

Address: G14, G/F, Main Building, The University of Hong Kong, Pokfulam, Hong Kong

Email: admissions@hku.hk (undergraduate admissions)
prcua@hku.hk (admissions of undergraduate students from the Mainland)
tpgadmissions@hku.hk (taught postgraduate admissions)

5. **Research postgraduate programmes**

With its distinguished excellence in research and outstanding performance in teaching, HKU attracts first-class teaching and research staff and brilliant students from around the world.

A detailed guide to prospective students is available at www.gradsch.hku.hk (Prospective Students).

Applicants can also obtain detailed information at FAQ: www.gradsch.hku.hk/faq.

Graduate School

Address: Room P403, Graduate House,
The University of Hong Kong, Pokfulam Road,
Hong Kong

Email: gradsch@hku.hk



Finances



Budget

You may consider the following items in your budget planning. The fees and charges stated below are based on those of the year of 2020/21 only. **The actual costs will increase for the year of 2021/22.**

Major expenditure (in HK dollar)		
Items	Undergraduate Students	Postgraduate Students
Academic Expenses		
Tuition fees	\$42,100 p.a.* (for local students) / \$171,000 p.a.* (for non-local students) *This is for UGC-funded programmes only. For self-financing courses, the fees vary from programme to programme.	For students of taught courses, you need to check the tuition fees with the Faculty Office as fees vary from programme to programme. For research students: \$42,100 p.a.
Caution money and other expenses	\$350 Caution money + \$240 Students' Union Fees	\$350 Caution money
Books and supplies (excluding personal computers & accessories)	Around \$8,100 - \$39,700 p.a. Some courses also incur significant expenses relating to overseas field trips and special equipment.	Around \$10,400 - \$50,100 p.a.

For the updated fees and charges, please refer to the following student handbooks and website:

Undergraduate:

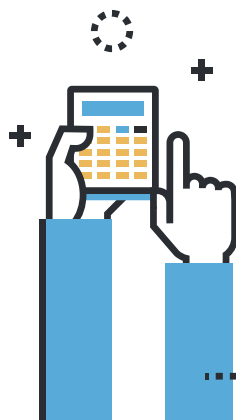
www.handbook.hku.hk/ug

Taught Postgraduate:

www.handbook.hku.hk/tpg

Research Postgraduate:

www.gradsch.hku.hk (Prospective Students)



Items		Undergraduate Students	Postgraduate Students
Housing Expenses			
University's residential halls & colleges	Lodging fees	\$17,000 - \$30,000 p.a. (from the end of August to the end of May)	\$19,000 - \$65,000 p.a.
	Hall miscellaneous charges	\$2,000 - \$3,000 p.a. These include hall association entrance and subscription fees, high table fees, key or smartcard deposits, etc., excluding air-conditioning charge which varies with individual lifestyle and seasons (approximately \$200 per month in summer).	
	Compulsory hall meal charges	\$9,000 - \$13,000 p.a. (not all meals are covered)	
University-administered non-hall housing	Lodging fees	\$15,000 p.a. - \$92,000 p.a.	
Privately rented accommodation	Lodging fees	Single room from \$50 per sq.ft. up, excluding utilities	
Other Expenses			
Food, groceries and transportation		Around \$5,500 per month up (depending on your lifestyles and if you go grocery shopping around the campus)	
Other personal expenses		You also need to budget for your entertainment, overseas travel, insurance and medical expenses, etc.	

The following tables give you some reference figures on common meal and transportation items:

Meal Expenses (on-campus outlets)

On-campus catering outlets offer food at a variety of price range. Typically, students should allow approximately \$100 to \$140 per day for food at on-campus outlets. Students who prefer eating outside campus should expect 10%-20% extra on meal expenses.

Items	Typical Spending Per Meal (HK\$)
Breakfast	20 - 45
Lunch	25 - 62
Afternoon Tea	20 - 35
Dinner	30 - 62
Sandwiches	15 - 40
Bakeries	12 - 40
Salads	25 - 55
Beverages / Coffee	8 - 40
Snacks	8 - 25



Note:

- Apart from Ricci Hall, St. John's College and University Hall, there is currently no meal plan available at on-campus eateries.
- The above costs are for reference only and are subject to change.

Transportation Cost

Frequent routes	Fare per ride (HK\$)	Means of public transport
Sassoon Road to Main Campus	2 - 7	By University shuttle bus
	5.1 - 11.7	By bus or minibus
Main Campus to Central	5.7 - 11.7	By bus or MTR
Main Campus to Causeway Bay	7.2 - 13.1	By bus, minibus or MTR
Main Campus to Mongkok	11.7 - 17	By bus, minibus or MTR

Financial Resources



HKU provides financial resources, such as financial assistance and scholarships to students. Eligible students are welcome to apply for them. For more details, please visit www.cedars.hku.hk/cedars-financial-resources.

Government Financial Assistance (for local students only)

Eligible local students who need financial support for their university studies are encouraged to apply for the Tertiary Student Finance Scheme and the Non-means Tested Loan Scheme administered by the Student Finance Office of the HKSAR Government. Information is available at www.cedars.hku.hk/finance/govt.html.

University Financial Assistance (for local students only)

University funds, which are available to local students, are in general used to supplement Government Grants and Loans. For more details, please visit www.cedars.hku.hk/finance/ufa.html.



Scholarships

Postgraduate scholarships are available for eligible students pursuing an M.Phil. or a Ph.D. degree. Further information is obtainable from the website of Graduate School at www.gradsch.hku.hk.

Students applying for undergraduate admissions will be considered for entrance scholarships when they submit applications to HKU. The result will be announced at the same time when students receive an offer of admission. No separate application is required. For updated information, please visit www.aal.hku.hk/admissions.

Students may also apply for other scholarships after they are admitted to HKU. For other HKU scholarship opportunities, please visit www.scholarships.hku.hk.

Students Under 18



You may still be under the age of 18 at the time of admission to HKU. In this case, your parent/guardian is required to sign a consent form, without which the University may have difficulties in arranging some of the teaching and learning activities, and accommodation for you.

You will be generally treated as an adult and are expected to lead your academic and social lives in HKU as other students do. The University will correspond directly with you, but not your parent/guardian, on things related to you such as course enrollment, payment status of fees, academic status, results and grades, etc. Your parent/guardian will only be contacted in case of emergency or other situations where potential risks are involved.



Things to note:

1. Housing

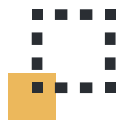
If you are in need of student housing and are successful in your application, you will only be housed in University's student residences such as Halls, Non-halls and the Residential Colleges.

2. Banking arrangement

Students under 18 must be accompanied in person by their parent or legal guardian to open a bank account at one of the local banks. The University is not able to act as your guardian in this context.

For non-local students, please refer to p.38 for more details.

Equality, Diversity and Sustainability



Equal Opportunities

HKU is committed to creating, promoting and maintaining an environment which provides equality of opportunity, and which is free of any discrimination and harassment. We support equal opportunity and strongly oppose discrimination/harassment. We will take whatever action may be needed to prevent, and if necessary, discipline behaviour which violates the Equal Opportunity Policy. To learn more, please visit www.eounit.hku.hk.

Handling Discrimination / Harassment Complaints

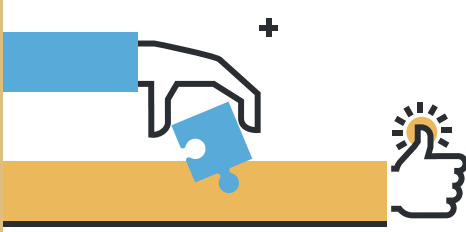
The University's equal opportunity policy forbids discrimination/harassment in activities carried out in the course of employment, education, provision of goods and services, or other activities organised by the offices of the University. Procedures for handling complaints of discrimination and harassment can be found on the website of the Equal Opportunity Unit at www.eounit.hku.hk/en/complaints-enquiries/procedures.

Parenting Needs

Facilities such as washrooms with baby-changing table at amenities centres, and baby care rooms on Main Campus, Centennial Campus and Sassoon Road Campus are available to parent students during their time on campus. For more information, please visit www.cedars.hku.hk/campuslife/student-amenities/baby-care-rooms.

Procedures for the Resolutions of Grievances of Students

The University has a set of procedures for students who wish to make a complaint on an administrative or academic matter. To learn more, please refer to the online handbook for undergraduate/taught postgraduate/MPhil and PhD programmes for information.



Religious Needs

The halal food corner is not merely a catering space for the Muslim community on campus, it is also a platform for promotion of cultural diversity and interaction among University members. A multi-faith prayer room for students and staff members is also available on 1/F of Fong Shu Chuen Amenities Centre. It offers an option for those who are in need of special praying venue during the day.

Lesbian, Gay, Bisexual and Transgender (LGBT)

CEDARS is committed to fostering a diverse campus to enrich your learning experience at HKU.

CEDARS-Counselling and Person Enrichment Section (CoPE) takes an affirmative approach on gender diversity. It promotes sensitive counselling service and welcomes anyone with struggles or questions on sexuality, no matter personal or general, to speak with CEDARS. It also advocates sexual diversity on campus through talks and supporting student advocacy groups. For more information, please visit www.cedars.hku.hk/cope.

Sustainability

The Sustainability Office works to collaboratively develop, strengthen, and realise HKU's institutional vision, commitments, and goals to integrate principles of sustainability into all aspects of the University's facilities, operations, and activities.

Our Policy on disposable plastic drink bottles aims to eliminate the sale and distribution of all disposable plastic bottles of one litre or less in volume at all university catering and retail outlets, vending machines, and events. Disposable plastic food service ware is not sold and distributed at campus catering outlets as well. HKU seeks to be a leader in reducing disposable plastics. We will work to reduce disposable plastic food service ware, bottles, and event banners. For further information on the sustainability efforts of the University, please visit www.sustainability.hku.hk.





Smoke-free Campus

HKU is a smoke-free campus.
Smoking is not allowed on campus,
both indoors and outdoors.



Campus Facilities

Amenities Centres



CEDARS manages three amenities centres (www.cedars.hku.hk/campuslife/student-amenities). The facilities are open for use by students and staff as individuals, groups and student societies. Some facilities can be booked online for exclusive use.

Chong Yuet Ming Amenities Centre

Email: cymac@hku.hk

Website: www.cedars.hku.hk/campuslife/student-amenities/CYMAC

Multi-purpose room, meeting room, music rooms, band room, baby care room, shower rooms, open spaces, publicity spaces, student society rooms, supermarket, cafeteria, restaurant

Fong Shu Chuen Amenities Centre

Email: fscac@hku.hk

Website: www.cedars.hku.hk/campuslife/student-amenities/FSCAC

Multi-purpose rooms, meeting rooms, party room, music rooms, prayer room, lounge, student society rooms, publicity spaces, vCave, restaurant

Pokfulam Amenities Centre

Email: pflac@hku.hk

Website: www.cedars.hku.hk/campuslife/student-amenities/PFLAC

Music room, games room, baby care room, assembly hall, photocopying corner



Chong Yuet Ming Cultural Centre

Chong Yuet Ming Cultural Centre (CYMCC), managed by CEDARS, is located on 3/F to 5/F above the Chong Yuet Ming Amenities Centre on the Main Campus.



The Yuet Ming Auditorium holding up to 400 seats, is a modern and well-equipped proscenium theatre at HKU, which is designed for cultural performances, drama production and various kinds of functions.

Studio 303 with a capacity of 148 seats, is an ideal performing venue for experimental performances in a variety of art forms, such as drama, dance, musical performance and theatrical workshop.

Exhibition Gallery, located on the 5/F of CYMCC with 134 sq. m. of exhibition area, is an ideal place for student artwork display, posters and public presentations.

Email: cymcc@hku.hk

Website: www.cedars.hku.hk/CYMCC





Catering

There are a number of canteens, restaurants, cafeterias, coffee shops and food kiosks locating across the campus, offering food with a variety of cuisines and service styles to cater for your need.

Website: www.cedars.hku.hk/catering



1. Robert Black College Dining Room

- Robert Black College, University Drive
- Chinese or Western set meal (table-served)

2. Chong Yuet Ming Amenities Centre Restaurant

- 4/F, Chong Yuet Ming Cultural Centre
- Local fast food and Asian food

3. Cafe 330

- Chong Yuet Ming Amenities Centre Cafeteria*
- 2/F, Chong Yuet Ming Amenities Centre
- Western Deli, snacks and beverages

4. Fong Shu Chuen Amenities Centre Restaurant

- 2/F, Fong Shu Chuen Amenities Centre
- Local fast food and Asian food

5. Ebenezer's Kebabs & Pizzeria

- HKU Halal Food Corner*
- 1/F, Fong Shu Chuen Amenities Centre
- Halal food and beverages

6. Subway

- Catering Outpost II*
- Run Run Shaw Podium
- Submarine sandwiches and beverages

7. Kiosk by The Sandwich Club

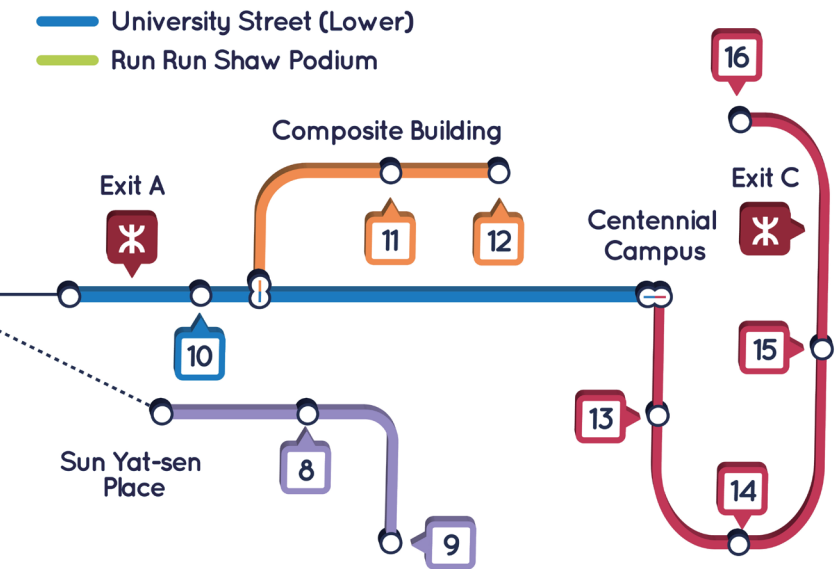
- Catering Outpost III*
- Run Run Shaw Podium
- Bento boxes, pastries, sandwiches and salads

8. The Coffee Academics

- Main Library (Old Wing) Coffee Shop*
- G/F, Library Building (Old Wing)
- Specialty coffee, sandwiches and salads

Food Map

Main Campus and Centennial Campus



9. Big Pizza

Catering Outpost IV

- 📍 Main Library Covered Podium
- 🌟 Halal Food - Pizza and drinks

10. HK Diners

Union Restaurant

- 📍 4/F, Haking Wong Building
- 🌟 Local fast food and Asian food

11. Starbucks Coffee

HKUSU Cafeteria A

- 📍 G/F, Composite Building
- 🌟 Coffee, pastries, sandwiches and salads

12. U Deli

HKUSU Cafeteria B

- 📍 G/F, Composite Building
- 🌟 Lunch boxes and beverages

13. Oliver's Super Sandwiches

Centennial Campus Catering Outlet A

- 📍 LG/F, The Jockey Club Tower, Centennial Campus
- 🌟 Sandwiches, baked potato, pasta, salad and coffee

14. Alfafa cafe

Centennial Campus Catering Outlet B

- 📍 G/F, The Jockey Club Tower, Centennial Campus
- 🌟 Pasta, sandwiches, salads, pastries and specialty coffee

15. Gourmet Asia

Centennial Campus Catering Outlet C

- 📍 G/F, Run Run Shaw Tower, Centennial Campus
- 🌟 Southeast Asia cuisine

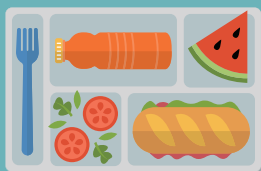
16. BIJAS Vegetarian

Centennial Campus Catering Outlet D

- 📍 G/F, Run Run Shaw Tower, Centennial Campus
- 🌟 Vegetarian food (Chinese cuisine)

For latest update and further information, please visit cedars.hku.hk/catering

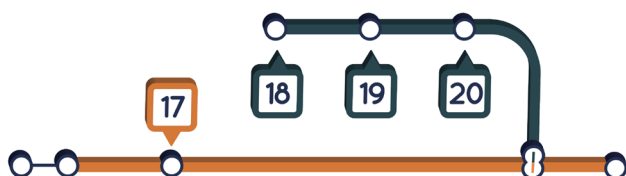




Food Map Sassoon Road Campus and Other Locations

- Pokfulam Road
- Sassoon Road

Sassoon Road Campus



17. Bayview Restaurant

- LG/F, 6 Sassoon Road
- Local and western dishes

18. Subway

- Fan Pui Garden Catering Outpost
- Fan Pui Garden, LG/F, William M.W. Mong Block, 21 Sassoon Road
- Submarine sandwiches and beverages

19. 1887

- 7/F, William M.W. Mong Block, 21 Sassoon Road
- Western and Asian cuisines

20. Cupping Room Coffee Roaster

- Faculty of Medicine Building Coffee Kiosk
- G/F, William M.W. Mong Block, 21 Sassoon Road
- Coffee and pastries

For latest update and further information,
please visit cedars.hku.hk/catering





Global Lounge

Located on the G/F of Fong Shu Chuen Amenities Centre and open to all HKU students, the Global Lounge provides a venue for all types of interactions, informal gatherings, and multi-cultural and international activities such as cultural nights, exhibitions and concerts to take place. Global Lounge has offered a unique experience to HKU students and has established itself as a hub of students' social and cultural life at HKU.

Learn more: www.als.hku.hk/globallounge

Libraries

The University of Hong Kong Libraries is an essential part of the educational facilities provided to you by the University. The Libraries advances the teaching and learning, research, and knowledge exchange pursuits of the University through its outstanding resources, people-centred services as well as its innovative and collaborative approaches.

The Libraries consists of the Main Library and six branch libraries, namely the Dental Library, Fung Ping Shan Library, Lui Che Woo Law Library, Music Library, Tin Ka Ping Education Library, and the Yu Chun Keung Medical Library. Of scholarly interest is Special Collections which houses a unique collection of Hong Kong materials, rare books, pamphlets, and microforms.

The Libraries offers a conducive environment for study, research, and knowledge exchange. In February 2019, the Libraries opened the Ground Floor *Think Tank* and the second-floor technology-rich *Ingenium* to complement *Level 3* learning spaces and its variety of areas suitable for different learning styles at the Main Library.

Learn more: www.lib.hku.hk





Learning Spaces

A variety of spaces are provided for individual and self-paced learning. These include quiet study areas, reading and lounging areas and individual workstations. Collaborative learning spaces are provided in the form of group study rooms, more traditionally styled work tables as well as diner booth style places that are well suited to group interactivity.

The Learning Commons is a campus hub equipped with modern learning facilities that encourages and facilitates individual and group study.

- Chi Wah Learning Commons: Podium Levels, Centennial Campus
- The Oval: 1/F, Knowles Building
- The Curve: 1/F and 2/F, K.K. Leung Building
- The Lounge: MB238, the Main Building

Learn more: www.les.hku.hk/teaching-learning/learning-space

Information Technology Services (ITS)

Information Technology Services (ITS) provides comprehensive information technology services with a state-of-the-art IT environment to support teaching, learning, research and administration of the University. Its facilities include an advanced campus network, powerful central servers, high-performance computer (HPC) clusters, cloud computing and modern learning environment, and its services include portal services, learning management and lecture capture services, centrally coordinated software, user support service and web-based administrative applications.

HKU Portal Services

ITS runs 24-hour, non-stop system and network services to support the IT needs of the University. All students are given a computer account, identified uniquely by an HKU Portal UID (User Identification) and an associated PIN (Personal Identification Number), for accessing a wide range of network services and applications conveniently.

The HKU Portal provides a user-friendly and easy-to-access interface for University members to access all the centrally provided IT services including services offered under the Student Information System (SIS), electronic mail, learning management system, web-based administrative applications, and Library services.

Learning Environment

ITS, through the Learning Environment Services (LES) Team, looks after the central learning environment of the University, comprising classrooms, lecture theatres, Chi Wah Learning Commons, The Oval (1/F of Knowles Building), The Curve (1/F and 2/F of K.K. Leung Building) and The Lounge (MB238 of Main Building). A wide variety of facilities is provided to support the technology-enabled learning experience.

User Service

ITS provides a wide range of IT support services to members of the University. Orientation courses are offered to new students at the start of each academic year. Regular IT seminars, induction courses and training workshops on popular IT topics and commonly used software packages are also held throughout the year.

Students may visit the Service Desk and the General Enquiry Counter on the 1/F of Library Building (Old Wing) or through the multiple channels described at www.its.hku.hk/service-desk to get assistance in using the central computing and network services.

Learn more: www.its.hku.hk



Daily Life Necessities

HKU offers a wide variety of facilities and services to meet the daily life necessities of students. Some examples are banking, bookstores, supermarket, photocopying services, baby care rooms and postal services, etc.

Please refer to our Main Campus and Sassoon Road Campus maps at the end of this brochure for the locations.

Student Sports and Recreation

The Centre for Sports and Exercise (CSE) offers a wide range of sports and fitness programmes, including:

- Uni-Sport
- Uni-Adventure
- Exercise is Medicine on Campus

The CSE also manages the following sports facilities:

- Flora Ho Sports Centre on Pokfulam Road
- Stanley Ho Sports Centre, Henry Fok Swimming Pool at Sandy Bay
- Fitness Centres at various locations

Learn more: www.cse.hku.hk





Student Support and Resources

Student Housing

At HKU, residential education forms part of the proud tradition of the University. They are part of the education system rather than a mere provision of accommodation. As members of halls and colleges have to learn to be independent and interact closely with students of various backgrounds under the same roof, halls are a community of students seeking social and intellectual enrichment.

HKU has 13 residential halls and 4 residential colleges where students can experience this important part of university life. Each hall has its own tradition, culture and unique characteristics.

Other accommodation options including non-hall housing and off-campus housing are available to suit different lifestyles and budgets of students. More information can be found at www.cedars.hku.hk/housing.





Health and Wellness

University Health Service (UHS)

University Health Service (UHS) has an on-campus clinic providing health and dental care services to students. Primary care service at the UHS is provided by a team of highly qualified and experienced doctors. In general, medical consultation is free of charge, but some investigations and medication are at a cost. A notional charge is also levied for dental treatment and physiotherapy treatment at the University clinic.

For non-local students, please refer to p.37 for information on the fees and charges applicable for specialist care and hospitalisation.

Email: uhealth@hku.hk

Website: www.uhs.hku.hk

Counselling and Person Enrichment

CEDARS-Counselling and Person Enrichment (CoPE) is committed to empowering students to develop social capability and emotional resilience, to capitalise on their character strengths, and to live a fulfilling and psychologically healthy life so that they are able to achieve personal success, overcome life challenges and contribute to the community by demonstrating integrity, sensitivity and leadership.

CoPE offers:

- Professional, confidential and free of charge counselling and psychological services
- Semester-based person enrichment programmes

Email: cedars-cope@hku.hk

Website: www.cedars.hku.hk/cope



Support for Students with Disabilities and/or Special Educational Needs (SEN)



CEDARS is committed to supporting students with Special Educational Needs (SEN) in overcoming barriers and achieving successful university education. We are the one-stop service unit for students with physical and sensory disabilities, learning and developmental disabilities, mental illnesses, chronic medical illnesses, or more than one disabilities.

We provide comprehensive service and support to facilitate students' university adjustment and learning:

- Accessible routing
- Information on campus facilities
- Support for application for special housing arrangements
- Special classroom and examination arrangements
- On-loan learning aids / equipment
- Information on funding resources to procure learning aids / equipment / services
- Study skills coaching
- Volunteer support
- Employment preparation
- Counselling service
- And more.....

For more details about the SEN service, please contact CEDARS-SEN Support.

Email: cedars-SEN@hku.hk

Website: www.cedars.hku.hk/cope/sen-support



Careers and Placement

CEDARS-Careers and Placement Section is committed to nurturing students to become global talent possessing professional competencies and an entrepreneurial mindset. We also collaborate closely with employers and community partners to identify and recruit quality graduates to create values for their organisations and the community.

We offer a wide range of high quality programmes, services and resources which support and empower students to explore and select suitable career options, acquire essential skills for workplace success, pursue a personally rewarding career and make positive impact on society.

Email: careers@hku.hk

Website: www.cedars.hku.hk/cp



Merci!

Language Support

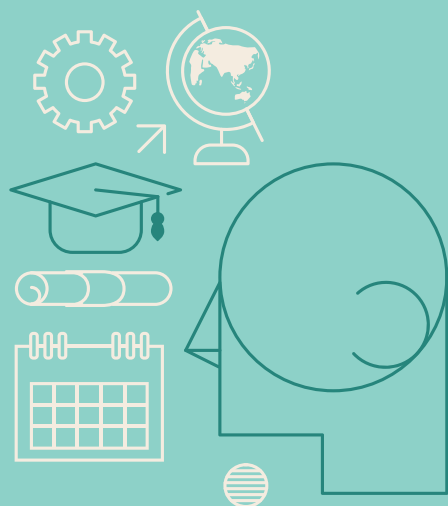
The School of Modern Languages and Cultures offers degree and non-degree language courses. More information can be found at www.smlc.hku.hk.

The Centre for Applied English Studies (CAES) provides English language support through taught courses and self-directed learning opportunities. For more information about the comprehensive services provided by CAES, please refer to www.caes.hku.hk.

The Chinese Language Centre offers courses in Cantonese, Putonghua (Mandarin), as well as Chinese language and cultural courses for local and non-local students. For more information, please visit www.chinese.hku.hk.

Individual Peer Tutoring Programmes on Language, namely the “*Survival Cantonese*” and the “*Peer English Tutoring*” are offered to help newcomers better adjust to the learning and social environment at the University and to facilitate greater integration of local and non-local students. For more information, please visit the website of CEDARS-Counselling and Person Enrichment (CoPE) at www.cedars.hku.hk/cope.

Student Life @HKU



Student Groups and Networks

The Hong Kong University Students' Union (HKUSU)

The HKUSU, the largest student body established on-campus since 1912, is a non-profit organisation and the only official student body serving more than 17,000 students of the University.

Student bodies of HKUSU include campus media and around 130 affiliated student organisations, each with distinctive objectives and functions that cater to the diverse interests of the student population. These student bodies are categorised into five main groups: Faculty and Academic Societies, Hall Students' Associations, Sports Clubs, Cultural Clubs and Independent Clubs.

Learn more: www.hkusu.org

The Postgraduate Student Association (PGSA)

The PGSA has been serving postgraduate students for more than twenty years. Postgraduate students can make new friends under the welcoming atmosphere from the beginning of the postgraduate journey.

Learn more: www.pgsa.hku.hk

A list of student associations, clubs and societies is available at www.cedars.hku.hk/campuslife/societiesactivities/associations.

Support to Student Groups

CEDARS offers support to individual student societies and groups in various ways from time to time. Under the umbrella of Support to Student Groups for a maximum of three years, supported student groups which are not bona fide student societies of the Students' Union, are able to enjoy services including booking of rooms and facilities; advertising through posting various CEDARS' publicity channels; advice on financial management/strategies (not involving any financial transaction); and advice on event management.

Learn more: www.cedars.hku.hk/support-to-student-groups

iMAP

iMAP is an online social networking platform for the HKU community exclusively. Members can search for private accommodation nearby, look for flatmates and other fellow students by interests, talent, nationality, current location and overseas experience, etc. They can also stay in touch with the rest of the HKU community and share their travel experience while abroad. To register, please visit www.cedars.hku.hk/imap.



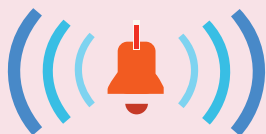
Induction Activities

At the start of every academic year, Faculties, Departments and other University Offices (e.g. Centre of Development and Resources for Students (CEDARS), University Health Service (UHS), HKU Libraries, etc.) organise induction activities for new HKU students. The Induction Programme series of CEDARS, the Inauguration Ceremony, and CEDARS Peer Connect and High Table are just some of the exciting examples on offer. All these activities are designed to help you integrate with the rest of the University and to cultivate your sense of identity as a member of HKU.

Learn more: www.fye.hku.hk



Crisis and Emergency



HKU provides physical and mental health services and financial assistance to students who are in urgent need:

University Health Service (UHS) Emergency Medical Services



Address: 2/F and 3/F, Meng Wah Complex
Mon to Fri: 8:40am – 5pm ; Sat: 8:25am – 12:45pm

Emergency: (852) 3917 1999

Dental Emergencies: (852) 2859 2511

Email: uhealth@hku.hk

Website: www.uhs.hku.hk

www.safety.hku.hk/homepage/pdf/RfME.pdf

When the clinic is closed, please go to the nearest Accident and Emergency Department at Queen Mary Hospital, 102 Pokfulam Road, Hong Kong.

CEDARS-Counselling and Person Enrichment (CoPE) Counselling Service

Address: Room 301-323, 3/F, Main Building
Mon to Thu: 9am – 5:45pm; Fri: 9am – 6pm; Sat: 9am – 1pm

To make an appointment, please call (852) 3917 8388 or email cedars-cope@hku.hk or visit Room 301-323, 3/F, Main Building.

Website: www.cedars.hku.hk/cope

During after-office hours, please go to the nearest medical doctor or Accident and Emergency Department at the hospital for immediate support.





CEDARS–Campus Life

University Financial Assistance – Emergency Assistance

Address: 3/F, Meng Wah Complex

Mon to Thu: 9am – 5:45pm; Fri: 9am – 6pm; Sat: 9am – 1pm

Call CEDARS at (852) 3917 2305 for an appointment to meet a Student Advising Officer for assessment of your needs.

Website: www.cedars.hku.hk/campuslife/finances/ufa-emergency-assistance

Estates Office

24-hour Security Control Centre

Address: Room 310, 3/F, Pao Siu Loong Building

Tel: (852) 3917 2882

Email: security@estates.hku.hk

Website: <https://www.estates.hku.hk/our-services/facility-management/security>

You may also find
the following useful:



- + Lost and Found Tel:
(852) 3917 2883
- + Public health, Pandemic,
Epidemic diseases Preparedness
and Response:
[www.uhs.hku.hk/phpedpr/
index.php](http://www.uhs.hku.hk/phpedpr/index.php)

Insurance Coverage

HKU has arranged the following two insurance policies for its registered students:

- i. Corporate Travel Insurance which is for covering students whilst travelling outside Hong Kong on a bona fide business/study trip authorized by the University in connection with the University's business such as exchange programmes, field trips or overseas study visits etc.
- ii. Group Personal Accident policy ("GPA") which is for covering students against any accidental loss sustained as a result of injury or sickness (i.e. restricted and limited to medical expenses only) whilst participating and/or attending in an event or activity organized / supervised / approved by the University within and/or outside Hong Kong such as field trips, project work, or site visits etc.

Students are not required to apply for the above insurance covers or to make any declaration in advance. Please note that the University would only provide standard travel insurance coverage for the business trips / activities of the University, and would not insure any personal cash or property of students in any circumstances. If additional or special insurance cover is required, it is entirely up to the student concerned to make personal arrangement at his/her own expense. Since many insurance policies are operating strictly on a reimbursement basis, you might have to settle the bills first before you can make a claim for reimbursement with the insurance company. It is therefore important for you to check carefully with your insurance company on the extent of coverage and claim procedures, and set aside a sum of money for contingencies. For more information about the insurance coverage arranged by HKU, you may contact the Finance and Enterprises Office of the University through email at feo_insurance@hku.hk.

Emergency Assistance When Travel Overseas

Travelling outside Hong Kong (including exchange programmes, overseas internships, career learning trips, service learning, competitions, academic activities, etc.) may involve some potential health and safety risk. HKU has a range of resources and information available to support you in planning a trip and coping with a crisis outside Hong Kong. The one-stop “Crisis and Emergency Outside Hong Kong” webpage (www.cedars.hku.hk/overseasemergencyassistance) brings together information and support services available at the University such as insurance coverage and arrangement, engagement of the International SOS for provision of general assistance, local information and travel advice, key contact information of the University and Consulates, reminders before departure, and other useful tips and precautions.



Information for Non-local Students

CEDARS as a whole provides a range of support services to non-local students and CEDARS-Campus Life is your first contact. We offer you specific support upon admission into HKU.



Campus Life Support

- We provide information and assistance on non-academic matters
- We give assistance and guidance on:
 - Housing services
 - Orientation programmes (Weeks of Welcome)
 - Settling-in support
 - Social and networking opportunities

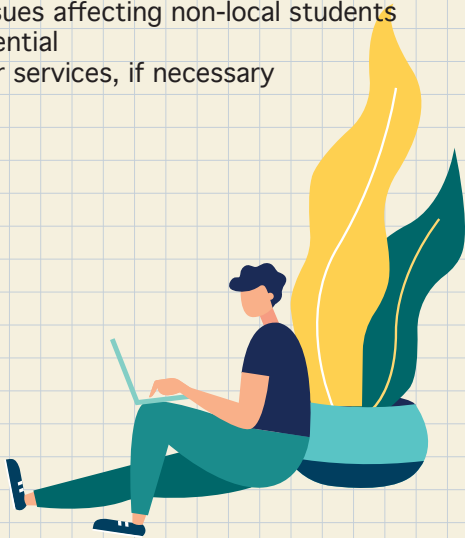
Why talk to us?



- We are experienced in helping students
- We understand the university system
- We have knowledge of issues affecting non-local students
- All discussions are confidential
- We can refer you to other services, if necessary

CEDARS – Campus Life

Address: 3/F, Meng Wah Complex
Email: cedars@hku.hk
Website: www.cedars.hku.hk/wow





Visa Matters

Who should apply for a student visa?

Generally speaking, if you wish to study in Hong Kong and you do not have the right of abode or right to land in Hong Kong, you need to apply for a student visa / entry permit to Hong Kong.

When to apply?

You should proceed with your student visa application as soon as you receive a conditional / confirmed offer of admission.

Visa sponsor office

For all non-local students, you are required to apply for your student visa / entry permit through Admissions and Academic Liaison Section (AALS). Please refer to the AALS website for detailed information on visa application procedure.

Website: www.studentvisa.hku.hk

Email: visa-mainland@hku.hk for students from mainland China
visa-overseas@hku.hk for students from overseas, The Macao SAR, Taiwan

Family Matters



Should I bring along my own family?

Before making a decision whether or not to bring your family to Hong Kong, it is important to consider the following issues:

- The airfare expenses for your family to and from Hong Kong
- Additional accommodation expenses as you may need to rent a larger flat
- Extra cost for food, clothing and other necessities
- Restricted employment opportunities for your spouse
- Provision of child care facilities
- Whether your children will adjust well to schools in Hong Kong
- English-speaking schools are mostly privately run and expensive
- The impact on you and your studies if your family is not happy in Hong Kong
- Whether you will come to Hong Kong first and arrange things for your family, or bring your family to Hong Kong together with you

Financial Matters



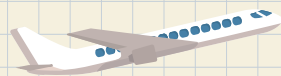
How can I transfer money to Hong Kong for use on arrival if I do not have a bank account in Hong Kong?

This can be done, either

- by instructing an overseas bank one to two weeks prior to your departure. Arrange to send money in your name to a bank in Hong Kong (both HSBC and the Bank of East Asia have branches on the HKU campus); or
- by carrying traveller's cheques or bank drafts for deposit into a local account (personal cheques can also be deposited but may take up to three weeks to be cleared).

How much money should I bring to Hong Kong?

There are usually significant extra expenses in the first month of your stay, such as rental charges, household items and textbooks. On top of the tuition fees, expenses for the first month can amount to HK\$10,000 or more for a student. It is important to have a realistic idea of the amount of money you will need and plan accordingly.



You are advised to bring enough cash, traveller's cheques, or bank drafts to cover expenses of at least your first month. Do not, however, carry too much cash at any time.

You can obtain a bank draft or transfer money to a bank account in Hong Kong through your local bank. Keep in mind that it may take some time to cash a bank draft with a large amount of money. Money transfers should be arranged well before your departure.

The official currency of Hong Kong is Hong Kong Dollar (HK\$). You can exchange Hong Kong Dollar with foreign currency or traveller's cheques according to the daily exchange rates at any banks or money exchange shops in Hong Kong.

Will I have access to banks and automated teller machines (ATM) on campus?

There are two banks and ATMs located on campus:

HSBC branch + ATMs (Tel: (852) 2233 3000)

The Bank of East Asia branch + ATMs (Tel: (852) 3609 1812)

Bank of China branch (ATM only)

Check their locations at www.maps.hku.hk.

Can I take up part-time employment and summer jobs?

Under the existing immigration regulations, non-local students in full-time full-degree programmes are allowed to work at the designated operators on the HKU campus for up to 20 hours per week during term time. They can also work full-time during the summer months within the currency of their limit of stay while they remain as a student at HKU. For details, please refer to the No Objection Letter (NOL) issued by the Hong Kong Immigration Department (ImmD) attached to your visa label. Or you may find such guidelines on the ImmD website: www.immd.gov.hk/eng/services/visas/study.html (After applying → Conditions of Stay).

While some students can earn extra money from part-time and vacation work, the availability of suitable jobs is not guaranteed. It is not advisable to plan your budget expecting to find work for the maximum allowable hours.



Medical Care

How do I access to specialist care or hospitalisation?

When specialist care or hospitalisation are required, you can consider using the services provided at (i) public clinics and general wards of government hospitals or (ii) private clinics and hospitals in the market.

To be eligible for receiving subsidised public healthcare services in public hospitals/clinics, a non-local student who has been permitted to remain in Hong Kong for more than 180 days MUST present a valid Hong Kong Identity Card when he/she is attending public hospitals/clinics for registration.

For a non-local student whose length of stay in Hong Kong is less than 180 days, he/she MUST present a valid travel document and student visa issued by the Hong Kong Immigration Department with the label/sticker/stamp indicating that “one is not a visitor” and “one has not overstayed”.

Non-local students without the aforesaid document(s) are required to pay full fees for services and hospitalisation in government hospitals.

For details of the fees charged by government hospitals, please visit www.ha.org.hk (Services Guides → Fees and Charges).

Insurance Coverage

Do I need to get my own medical insurance?

Non-local students who are going to spend more than 180 days in Hong Kong are eligible to apply for a Hong Kong Identity Card (HKID Card), and he/she may enjoy the subsidised public healthcare services provided by the HKSAR Government. However, the demand for the said public services is very high and may not meet your urgent or special medical needs. Given that the University would only provide primary healthcare services, it is therefore highly recommended for all non-local students irrespective of your length of stay in Hong Kong to get your own medical and hospitalisation insurance before your departure from your home country. If you plan to travel to other countries for personal business during your study in HKU, you are advised to purchase an insurance policy with worldwide coverage.



Weeks of Welcome (WoW)

What kinds of induction activities are available?

A series of induction activities for newly arrived non-local students are available. The activities, which are a mixture of fun, fact finding, visits and tours, aim to help the newly arrived to settle down, induct into the local way, enhance cross cultural experience and sharing, as well as explore new environment and people. Local students will serve as student hosts to lead these activities and introduce HKU and Hong Kong to new students.



Learn more: www.cedars.hku.hk/wow

Non-local Students under the age of 18



What information do I need to know if I am under 18?

1. Student visa application

Your parent needs to nominate a local Hong Kong resident to be your guardian when applying for a student visa. Details of such nomination can be found on the guardian nomination form. Please consult the office of your student visa sponsor (see p.34) if you have further enquiries.

2. Hong Kong Identity Card

If your parent has nominated a relative to be your local guardian to the Hong Kong Immigration Department, you should be accompanied by that local guardian when you submit your Hong Kong Identity Card application at the Hong Kong Immigration Department.

If your parent has nominated “The University of Hong Kong” to be your local guardian, you can just submit your application to the Hong Kong Immigration Department on your own. You will be asked to fill in a declaration form there.

Campus Maps

Sassoon Road Campus Map



Some Departments at miscellaneous hospitals not shown

Main Campus Map



Sai Ying Pun Post Office, 27 Pokfulam Road



ATM Centre



Baby Care Room



Bank



Bookstore



CEDARS Office



Filtered Water



Photocopying



Posting Box



Supermarket & Convenience Store





cedars
Centre of Development and Resources for Students
The University of Hong Kong
香港大學學生發展及資源中心