



cedars
Centre of Development and Resources for Students
The University of Hong Kong
香港大學學生發展及資源中心

A GLIMPSE OF STUDENT LIFE @ HKU

FOR PROSPECTIVE STUDENTS 2019-20



Contents

- 3 Welcome
- 4 Must-know Facts of HKU
- 5 Introducing the Centre of Development and Resources for Students (CEDARS)
- 6 Academic and Admission Matters
- 7 Finances
- 10 Students Under 18
- 11 Equality, Diversity and Sustainability
- 13 Smoke-free Campus
- 14 Campus Facilities
- 21 Student Support and Resources
- 25 Student Life @HKU
- 27 Crisis and Emergency
- 30 Information for Non-local Students
- 36 Campus Maps



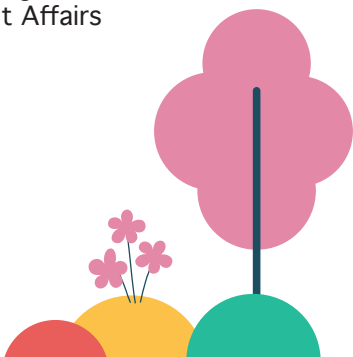
While you are considering to study at The University of Hong Kong (HKU), we would like to provide you with more information about our university – the oldest of all universities in a unique territory.

HKU considers university education as a total learning experience and HKU has much to offer, both academically and culturally. Our goal is to help students acquire the experience that can benefit you lifelong. Towards this goal, the Centre of Development and Resources for Students (CEDARS) together with other units provide all the support that one may need. You are welcome to find out more about the wide range of services and the varied resources available on campus. Even before you become a student here, this booklet will provide a glimpse of how life is like being a student at HKU.

We look forward to working with you to facilitate developing the rewarding total experience.

Dr. Eugenie Leung
Dean of Student Affairs

March 2019





Must-know Facts of HKU

Founded in 1911, HKU is the oldest tertiary institution in Hong Kong. With a population of over 29,000 students, there are over 9,000 overseas students enrolled from about 100 countries in 2017/18.

HKU is a comprehensive university. It offers a wide spectrum of high quality programmes with an emphasis on encouraging a flexible approach to studies.

HKU received well-deserved recognition from prestigious global institutions. It ranked 1st in Hong Kong¹, 2nd in Asia², 25th in the world³, 1st in Hong Kong for Best Global Universities⁴ and 1st most International University in the World⁵.

¹ THE World University Rankings 2019

² QS Asia University Rankings 2019

³ QS World University Rankings 2019

⁴ US News 2019

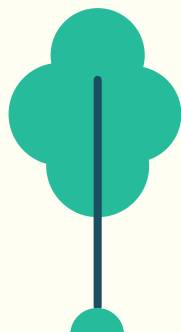
⁵ THE Most International Universities in the World 2019

HKU prides itself on its international community of students and staff, providing a vibrant, colourful campus life for everyone. Some 144 countries are represented in the student body, with new ones added every year. Students can enjoy an international experience not just within the university but also through HKU's myriad of worldwide exchange programmes, summer schools and international internship opportunities.

Learn more: www.hku.hk



Introducing the Centre of Development and Resources for Students (CEDARS)



The Centre of Development and Resources for Students (CEDARS) is committed to fostering an intellectually stimulating and culturally diverse campus to enrich students' total learning experience at HKU. Bridging the boundary between classroom and the world, we provide support services, resources and educational programmes to facilitate students' learning.

Cedars are ornamental trees with durably scented wood and evergreen leaves; they signify growth, development and shelter which are the goals of our work for students. At CEDARS, we hope to nurture students with a durable scent of the intellect so that they are forever young and fresh.

As the one-stop student service and resources centre, and co-curricular learning hub, CEDARS comprises of three Sections and two Programme Teams to provide comprehensive student services such as housing, financial support, visa matters, employment preparation, professional counselling, SEN support as well as a spectrum of co-curricular learning and service opportunities.

- Campus Life Section
- Careers and Placement Section
- Counselling and Person Enrichment Section
- Student Development Team
- General Education Team



CEDARS

Website: www.cedars.hku.hk

Facebook: facebook.com/hku.cedars

Instagram: [@hku.cedars](https://instagram.com/hku.cedars)

Academic and Admission Matters

There are a variety of courses and programmes for students to enjoy an academic experience at HKU. Apart from studies, students gain internship experiences, personal and professional networks, and exciting exposure to the vibrant city life. Students interested in applying to our programmes can obtain detailed information at the following websites:

1. **Undergraduate programmes:** aal.hku.hk/admissions
2. **Taught postgraduate programmes:** aal.hku.hk/tpg
3. **Summer programmes:** aal.hku.hk/summer
4. **Others – Exchange and visiting programmes:** aal.hku.hk/studyabroad

Admissions Office - Admissions and Academic Liaison Section

Address: MB14, G/F, Main Building, The University of Hong Kong, Pokfulam, Hong Kong

Email: admissions@hku.hk

tpgadmissions@hku.hk (for taught postgraduate programmes)

5. **Research postgraduate programmes**

With its distinguished excellence in research and outstanding performance in teaching, HKU attracts first-class teaching and research staff and brilliant students from around the world.

A detailed guide to prospective students is available at www.gradsch.hku.hk/gradsch/.

Applicants can also obtain detailed information at FAQ: www.gradsch.hku.hk/gradsch/faq.

Graduate School

Address: Room P403, Graduate House,
The University of Hong Kong, Pokfulam Road,
Hong Kong

Email: gradsch@hku.hk



Finances



Budget

You may consider the following items in your budget planning. The fees and charges stated below are based on those of the year of 2018/19 only. **The actual costs will increase for the year of 2019/20.**

Major expenditure (in HK dollar)		
Items	Undergraduate Students	Postgraduate Students
Academic Expenses		
Tuition fees	<p>\$42,100 p.a.* (for local students) / \$164,000 p.a.* (for non-local students)(fees for 2019/20)</p> <p>*This is for UGC-funded programmes only. For self-financing courses, the fees vary from programme to programme.</p>	<p>For students of taught courses, you need to check the tuition fees with the Faculty Office as fees vary from programme to programme.</p> <p>For research students: \$42,100 p.a.</p>
Caution money and other expenses	\$350 Caution money + \$240 Student Union Fees	\$350 caution money
Books and supplies (excluding personal computers & accessories)	Around \$7,700 - \$37,000 p.a.	Around \$9,800 - \$48,000 p.a.
	Some courses also incur significant expenses relating to overseas field trips and special equipment.	

For the updated fees and charges, please refer to the student handbooks as follows:

Undergraduate:

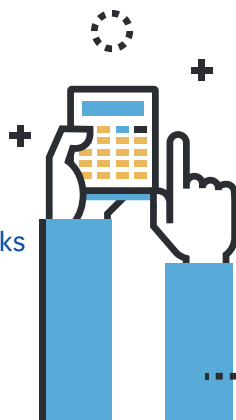
www.handbook.hku.hk/ug

Taught Postgraduate:

www.handbook.hku.hk/tpg

Research Postgraduate:

www.gradsch.hku.hk/gradsch/current-students/handbooks



Housing Expenses

University's residential halls & colleges	Lodging fees	\$15,000 - \$29,000 p.a. (285 residential days) (fees for 2019/20)	\$18,000 - \$63,000 p.a. (fees for 2019/20)
	Hall miscellaneous charges	\$1,600 - \$3,000 p.a. These expenses include hall association entrance and subscription fees, high table dinner fees, key deposits, etc., excluding air-conditioning charge which varies with individual lifestyle and seasons (approximately \$200 per month in summer).	
	Compulsory hall meal charges	\$9,000 - \$13,000 p.a. (not all meals are covered)	
University-administered non-hall housing	Lodging fees	\$15,000 p.a. - \$60,000 p.a. (fees for 2019/20)	
Privately rented accommodation	Lodging fees	Single room from \$50 per sq.ft. up, excluding utilities	

Other Expenses

Food, groceries and transportation	Around \$5,000 per month up (depending on your lifestyles and if you go grocery shopping around the campus)
Other personal expenses	You also need to budget for your entertainment, overseas travel, insurance and medical expenses, etc.

The following tables give you some reference figures on common meal and transportation items:

Meal Expenses (on-campus outlets)

Items	Average Spending Per Meal / Purchase (HK\$)
Breakfast	20 – 70
Afternoon Tea	20 – 50
Lunch	25 – 70
Dinner	30 – 90
Sandwiches	15 – 45
Bakeries	8 – 30
Salads	25 – 50
Hot Beverages / Coffee	8 – 40
Cold Beverages / Coffee	10 – 45
Snacks	8 – 25



Note:

- For your reference, a student typically spends about \$100 to \$120 per day on food.
- Apart from Ricci Hall, St. John's College and University Hall, there is currently no meal plan available at on-campus eateries.
- The above costs are for reference only and are subject to change.

Transportation Cost

Frequent routes	Fare per ride (HK\$)	Means of public transport
Sassoon Road to Main Campus	2	By University shuttle bus
	5 - 11	By bus or minibus
Main Campus to Central	5 - 9	By bus or MTR
Main Campus to Causeway Bay	7 - 11	By bus, minibus or MTR
Main Campus to Mongkok	11 - 15	By bus, minibus or MTR

Financial Resources



HKU provides financial resources, such as financial assistance and scholarships to students. Eligible students are welcome to apply for them. For more details, please visit cedars.hku.hk/cedars-financial-resources.

Government Financial Assistance (for local students only)

Eligible local students who need financial support to their university studies are encouraged to apply for the Tertiary Student Finance Scheme and the Non-means Tested Loan Scheme administered by the Student Finance Office of the HKSAR Government. Information is available at cedars.hku.hk/finance/govt.html.

University Financial Assistance (for local students only)

University funds, available to local students, are in general used to supplement Government Grants and Loans. For more details, please visit cedars.hku.hk/finance/ufa.html.



Scholarships

Postgraduate scholarships are available for eligible students pursuing an M.Phil. or a Ph.D. degree. Further information is obtainable from the website of Graduate School at www.gradsch.hku.hk.

Students applying for undergraduate admissions will be considered for entrance scholarships when they submit applications to HKU. The result will be announced at the same time when students receive an offer of admission. No separate application is required. For updated information, please visit www.aal.hku.hk/admissions.

Students may also apply for other scholarships after they are admitted to HKU. For other HKU scholarship opportunities, please visit www.scholarships.hku.hk.

Students Under 18



You may still be under the age of 18 at the time of admission to HKU. In this case, your parent/guardian is required to sign a consent form, without which the University may have difficulty in arranging some of the teaching and learning activities, and accommodation for you.

You will be generally treated as an adult and are expected to lead your academic and social lives in HKU as other students do. The University will correspond directly with you, but not your parent/guardian, on things related to you such as course enrollment, payment status of fees, academic status, results and grades, etc. Your parent/guardian will only be contacted in emergency or other situations where potential risks are involved.



Things to note:

1. Housing

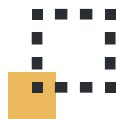
If you are in need of student housing and are successful in your application, you will only be housed in University's student residences such as Halls, Non-halls and the Residential Colleges.

2. Banking arrangement

Students under 18 must be accompanied in person by their parent(s) or legal guardian to open a bank account at one of the local banks. The University is not able to act as your guardian in this context.

For non-local students, please refer to p.35 for more details.

Equality, Diversity and Sustainability



Equal Opportunities

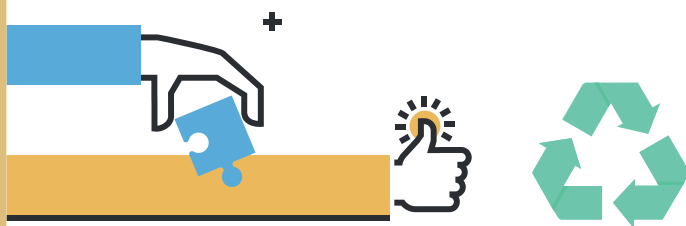
HKU is committed to creating, promoting and maintaining an environment which provides equality of opportunity, and which is free of any discrimination and harassment. The Equal Opportunity Unit assists the University in achieving the aforementioned goal by enhancing the sensitivity of the students and staff, handling discrimination/harassment complaints and enquiries, identifying and recommending changes to policies/practices in line with the University's equal opportunity policy. To learn more, please visit www.eounit.hku.hk.

Handling Discrimination / Harassment Complaints

The University's equal opportunity policy forbids discrimination/harassment in activities carried out in the course of employment, education, provision of goods and services, or other activities organised by the offices of the University. Procedures for handling complaints of discrimination and harassment can be found on the webpage of the Equal Opportunity Unit at www.eounit.hku.hk/en/complaints-enquiries/procedures.

Parenting Needs

Facilities such as washrooms with baby-changing table at amenities centres, and baby care rooms on Main Campus, Centennial Campus and Sassoon Road Campus are available to parent students during their time on campus. For more information, please visit cedars.hku.hk/campuslife/student-amenities/baby-care-rooms.



Religious Needs

The halal food corner is not merely a catering space for the Muslim community on campus, it is also a platform for promotion of cultural diversity and interaction among University members. A multi-faith prayer room is also available on 1/F of Fong Shu Chuen Amenities Centre for use by students and staff members. It offers an option for those who are in need of special praying venue during the day.

Sustainability

The Sustainability Office works to collaboratively develop, strengthen, and realise HKU's institutional vision, commitments, and goals to integrate principles of sustainability into all aspects of the University's facilities, operations, and activities.

The University's Policy on disposable plastic bottles aims to eliminate the sale and distribution of all disposable plastic water bottles of one litre or less in volume at all University catering and retail outlets, vending machines, and events.

HKU has also banned single use plastic straws in catering outlets managed by HKU Catering Service (except in medical or emergency circumstances) starting from 3 September 2018. For further information on the sustainability efforts of the University, please visit www.sustainability.hku.hk.





Smoke-free Campus

HKU is a smoke-free campus.
Smoking is prohibited in all areas of the University.



Campus Facilities

Amenities Centres



All HKU students can enjoy facilities provided by the three amenities centres managed by CEDARS (cedars.hku.hk/campuslife/student-amenities). Some facilities can be booked online for exclusive use.

Chong Yuet Ming Amenities Centre

Email: cymac@hku.hk

Website: cedars.hku.hk/campuslife/student-amenities/CYMAC

Baby care room, banner site, counter space, meeting room, music room, shower room, student society room, supermarket, restaurant

Fong Shu Chuen Amenities Centre

Email: fscac@hku.hk

Website: cedars.hku.hk/campuslife/student-amenities/FSCAC

Banner site, meeting room, multi-purpose room, music room, prayer room, restaurant

Pokfulam Amenities Centre

Email: pflac@hku.hk

Website: wp2.cedars.hku.hk/pac/

Assembly Hall, games room, multi-purpose room, music room



Chong Yuet Ming Cultural Centre

Chong Yuet Ming Cultural Centre (CYMCC), managed by CEDARS, is located at 3/F to 5/F above the Chong Yuet Ming Amenities Centre on the Main Campus of HKU. This new Cultural Centre houses an auditorium, a studio theatre and an exhibition gallery.



The Yuet Ming Auditorium holding up to 400 seats, is a modern and well-equipped proscenium theatre, which is designed for drama, dance, band show and screening.

Studio 303 with a capacity of 140 seats, is an ideal performing venue for experimental performances in a variety of art forms, such as drama, dance, musical performance and theatrical workshop.

Exhibition Gallery, located on the 5/F of CYMCC with 134 sq. m. of exhibition area, is an ideal place for student artwork exhibition.

Email: cymcc@cedars.hku.hk

Website: cedars.hku.hk/campuslife/cymcc



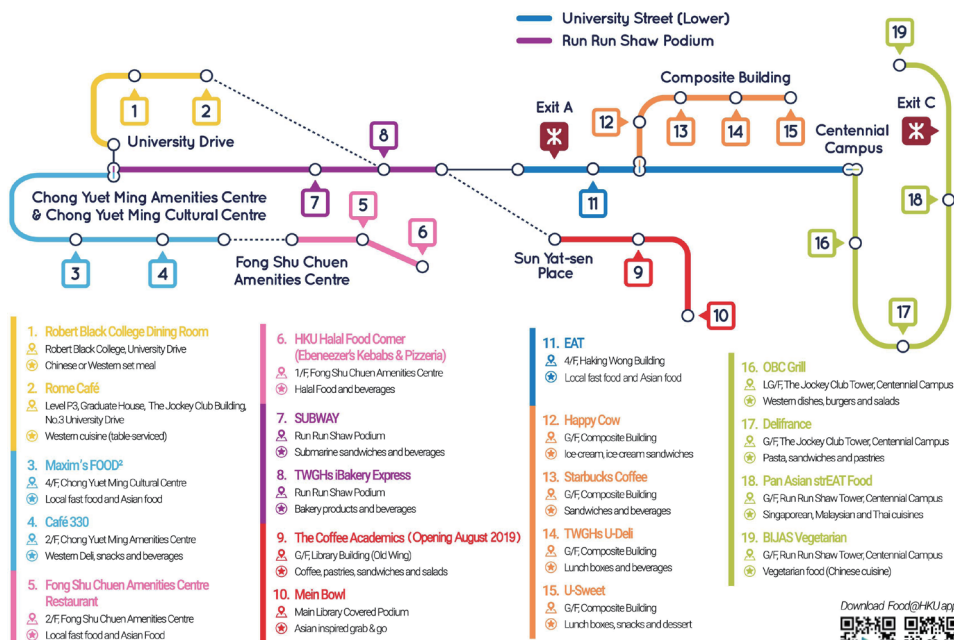


Catering

There are many restaurants serving different kinds of cuisines near the Main Campus and Centennial Campus.

Website: cedars.hku.hk/catering

Food Map Main Campus and Centennial Campus

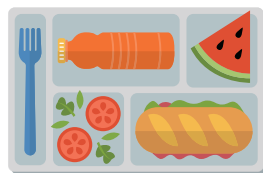


Download Food@HKU app



Food Map

Sassoon Road Campus and Other Locations



Download *Food@HKU* app:





Global Lounge

Located on the ground floor of Fong Shu Chuen Amenities Centre and opened to all HKU students, the Global Lounge provides a venue for all types of interactions, informal gatherings, and multi-cultural and international activities such as cultural nights, exhibitions and concerts to take place. It has offered a unique experience to students and has established itself as a hub of students' social and cultural life at HKU.

Learn more: www.als.hku.hk/globalounge

Libraries

The HKU Libraries consist of the Main Library and six specialist branch libraries. The Main Library comprises an all-round collection of materials in arts, humanities, architecture, social sciences, and science and technology. It also has a rich collection of audio-visual materials and reserve materials, as well as the Special Collections which houses a unique selection of Hong Kong materials, rare books, pamphlets, and microforms. Located on the 3rd floor of the Main Library, Level 3 is a learning commons style facility providing a variety of spaces suitable for different learning styles including reflective self-study as well as collaborative study.

The other six specialist libraries are: Dental Library, Fung Ping Shan Library (the University's Chinese library), Lui Che Woo Law Library, Music Library, Tin Ka Ping Education Library and Yu Chun Keung Medical Library. The Libraries provide photocopiers and laser printers for users to make a copy of documents for the purposes of research, private study, criticism or review.

Learn more: lib.hku.hk/



Learning Spaces

The Learning Commons is a campus hub equipped with modern learning facilities that encourages and facilitates individual and group study. A variety of spaces are provided for individual and self-paced learning including quiet study areas, reading and lounging areas, and individual workstations. Collaborative learning spaces are provided in the form of group study rooms, more traditionally styled work tables as well as diner booth style places that are well suited to group interactivity.



1. Chi Wah Learning Commons: Podium Levels, Centennial Campus
2. The Oval: 1/F, Knowles Building
3. The Curve: 1/F and 2/F, K.K. Leung Building
4. The Lounge: 2/F, the Main Building

Learn more: www.les.hku.hk/teaching-learning/learning-space

Information Technology Services (ITS)

Information Technology Services (ITS) provides comprehensive information technology services to support learning, teaching, research and administration at HKU. ITS provides a wide range of IT support services to members of the University. Students may visit ITS Service Desk on the 1/F of Library Building (Old Wing) or send email to ithelp@hku.hk for assistance in using the central computing and network services.

Learn more: its.hku.hk





Daily Life Necessities

HKU offers a wide variety of facilities and services to meet the daily life necessities of students. Some examples are banking, bookstores, supermarkets, photocopying services, baby care rooms and postal services, etc.

Please refer to our Main Campus and Sassoon Road Campus maps at the end of this brochure for the locations.

Student Sports and Recreation

The Centre for Sports and Exercise (CSE) offers a wide range of sports and fitness programmes, including:

- Uni-Sport
- Uni-Adventure
- Exercise is Medicine on Campus

The CSE also manages the following sports facilities:

- Flora Ho Sports Centre, Lindsay Ride Sports Centre and Stanley Smith Swimming Pool on Pokfulam Road
- Stanley Ho Sports Centre, Henry Fok Swimming Pool at Sandy Bay
- 3 Fitness Centres in Lindsay Ride Sports Centre, Henry Fok Health & Fitness Complex and the ACTIVE (Centennial Campus)
- Tennis court at Robert Black College

Learn more: cse.hku.hk





Student Support and Resources

Student Housing

Student Residences are more than just a place to sleep – they form part of a long tradition of HKU and are important to your overall education. Hall life teaches students to be independent and gives them the chance to interact with people from different backgrounds under one roof.

HKU has 13 residential halls and 4 residential colleges where students can experience this important part of university life. Each hall has its own tradition, culture and unique characteristics.

Other accommodation options including non-hall housing and off-campus housing are available to suit different lifestyles and budgets of students. More information can be found at cedars.hku.hk/cl (Accommodation).





Health and Wellness

University Health Service (UHS)

University Health Service (UHS) has an on-campus clinic providing health and dental care services to students. Primary care service at the UHS is provided by a team of highly qualified and experienced doctors. In general, medical consultation is free of charge, but some investigations and medication are at a cost. A notional charge is also levied for dental treatment and physiotherapy treatment at the University clinic.

For non-local students, please refer to p.34 for information on the fees and charges applicable for specialist care and hospitalisation.

Email: uhealth@hku.hk

Website: www.uhs.hku.hk

CEDARS-Counselling and Person Enrichment (CoPE)

Counselling services for students are provided by CEDARS-Counselling and Person Enrichment (CoPE). CEDARS-CoPE is committed to empowering students to develop your social capability and emotional resilience, to capitalise on your character strengths, and to live a fulfilling and psychologically healthy life so that you are able to achieve personal success, overcome life challenges and contribute to the community by demonstrating integrity, sensitivity and leadership. It offers:

- professional, confidential and free of charge counselling and psychological services
- person enrichment programmes

Email: cedars-cope@hku.hk

Website: cedars.hku.hk/cope



Support for Students with Disabilities and/or Special Educational Needs (SEN)



CEDARS is committed to supporting students with disabilities or special educational needs (SEN) in overcoming barriers and achieving successful university education. It is the one stop service unit for students with physical and sensory disabilities, learning and developmental disabilities, mental illnesses, chronic medical illnesses, or more than one disabilities.

It provides comprehensive service and support to facilitate your university adjustment and learning:

- Information on campus facilities
- Learning aids / equipment
- Funding resources
- Employment preparation
- Special examination arrangements
- Volunteer / buddy support
- Study skills coaching
- And more.....

For more details about the SEN service, please contact CEDARS-SEN Support.

Email: cedars-SEN@hku.hk

Website: cedars.hku.hk/CoPE/SEN



Careers and Placement

The CEDARS-Careers and Placement is committed to nurturing students to become global talents possessing professional competencies and entrepreneurial mindset. Being the first stop with all-round, high quality co-curricular programmes and placement resources, it supports and empowers students to explore and select suitable career options, acquire key skills for workplace success, pursue a personally rewarding career and make positive impact on society. Its major services include:

- Career preparation
- Job searching
- Entrepreneurship education and support

Email: careers@hku.hk
Website: cedars.hku.hk/cp

Language Support



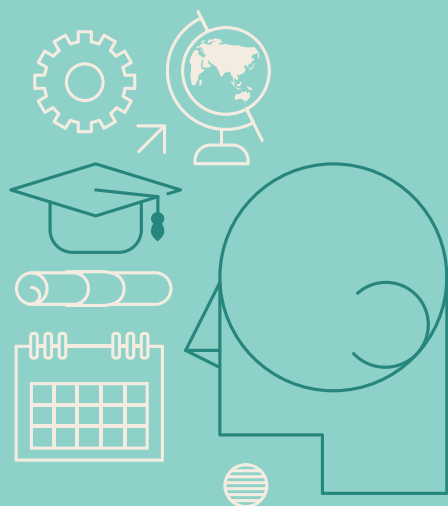
The School of Modern Languages and Cultures offers degree and non-degree language courses. More information can be found at smlc.hku.hk.

The Centre for Applied English Studies (CAES) provides English language support through taught courses and self-directed learning opportunities. For more information about the comprehensive services provided by CAES, please refer to caes.hku.hk/home.

The Chinese Language Centre offers courses in Cantonese, Putonghua (Mandarin), as well as Chinese language and cultural courses for local and non-local students. For more information, please visit www.chinese.hku.hk.

Individual Peer Tutoring Programme on Language, namely the “Survival Cantonese” and the “Peer English Tutoring” are offered to help newcomers better adjust to the learning and social environment at the University and to facilitate greater integration of local and non-local students. For more information, please visit the website of CEDARS-Counselling and Person Enrichment (CoPE) at cedars.hku.hk/cope.

Student Life @HKU



Student Groups and Networks

The Hong Kong University Students' Union (HKUSU)

The HKUSU, the largest student body established on-campus since 1912, is a non-profit organisation and the only official student body serving more than 16,000 students of the University.

Student bodies of HKUSU include campus media and around 130 affiliated student organisations, each with distinctive objectives and functions that cater to the diverse interests of the student population. These student bodies are categorised into five main groups: Faculty and Academic Societies, Hall Students' Associations, Sports Clubs (forming Sports Association, HKUSU), Cultural Clubs (forming Cultural Association, HKUSU) and Independent Clubs (forming Independent Clubs Association, HKUSU).

Learn more: www.hkusu.org

A list of student associations, clubs and societies is available at cedars.hku.hk/campuslife/societiesactivities/associations.

The Postgraduate Student Association (PGSA)

The PGSA has been serving postgraduate students for more than twenty years. Postgraduate students can make new friends under the welcoming atmosphere from the beginning of the postgraduate journey.

Learn more: www.pgsa.hku.hk

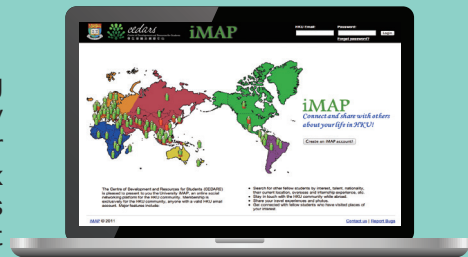
Support to Student Groups

CEDARS offers support to student societies and groups in various ways from time to time. Under the umbrella of Support to Student Groups / Projects, for a maximum of three years, supported student groups which are not bona fide student societies of the HKUSU, are able to enjoy services including booking of rooms and facilities; advertising through posting various CEDARS' publicity channels; advice on financial management/strategies (not involving any financial transaction); and advice on event management.

Learn more: cedars.hku.hk/support-to-student-groups

iMAP

iMAP is an online social networking platform for the HKU community exclusively. Members can search for private accommodation nearby, look for flatmates and other fellow students by interest, talent, nationality, current location and overseas experience, etc. They can also stay in touch with the rest of the HKU community and share their travel experience while abroad. To register, please visit cedars.hku.hk/imap.



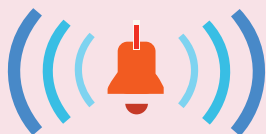
Induction Activities

At the start of every academic year, Faculties, Departments and other University Offices (e.g. Centre of Development and Resources for Students (CEDARS), University Health Service (UHS), HKU Libraries, etc.) organise induction activities for new students. The Induction Programme series of CEDARS, the Inauguration Ceremony, and the Peer Connect and High Table Dinner are just some of the exciting examples on offer. All these activities are designed to help you integrate with the rest of the HKU community and to cultivate your sense of identity as a member of HKU.

Learn more: wp2.cedars.hku.hk/fye



Crisis and Emergency



HKU provides physical and mental health services and financial assistance to students who are in urgent need:

University Health Service (UHS) **Emergency Medical Services**



Address: 2/F, Meng Wah Complex
Mon to Fri: 8:40am – 5pm ; Sat: 8:25am – 12:45pm

Emergency no.: (852) 3917 1999

Email: uhealth@hku.hk

Website: www.uhs.hku.hk

When the clinic is closed, please go to the nearest Accident and Emergency Department at Queen Mary Hospital, 102 Pokfulam Road, Hong Kong.

CEDARS-Counselling and Person Enrichment (CoPE) **Counselling Service**

Address: Room 301-323, 3/F, Main Building
Mon to Thu: 9am – 5:45pm; Fri: 9am – 6pm; Sat: 9am – 1pm

To make an appointment, please call (852) 3917 8388 or email cedars-cope@hku.hk.

Website: cedars.hku.hk/cope

During after-office hours, please go to the nearest medical doctor or Accident and Emergency Department at the hospital for immediate support.





CEDARS–Campus Life

University Financial Assistance – Emergency Assistance

Address: 3/F, Meng Wah Complex

Mon to Thu: 9am – 5:45pm; Fri: 9am – 6pm; Sat: 9am – 1pm

To make an appointment, please call (852) 3917 2305.

Website: cedars.hku.hk/campuslife/finances/ufa-emergency-assistance

Estates Office

24-hour Security Control Centre

Address: Room 310, 3/F, Pao Siu Loong Building

Tel: (852) 3917 2882

Email: security@estates.hku.hk

Website: www.estates.hku.hk/our-services/facility-management/security

You may also find
the following useful:



+ Lost and Found Tel:
(852) 3917 2883

+ Pandemic and Influenza:
www.uhs.hku.hk/pandemic



Insurance Coverage

The University has a standard insurance coverage for students. Information on the insurance coverage can be found in the undergraduate and postgraduate handbooks. For details on the insurance coverage, please contact the Finance and Enterprises Office through email at feo_insurance@hku.hk.

Emergency Assistance Outside Hong Kong

Travelling outside Hong Kong (including exchange programmes, overseas internships, career learning trips, service learning, competitions, academic activities, etc.) may involve some potential health and safety risk. HKU has a range of resources and information available to support you in planning a trip and coping with a crisis outside Hong Kong. The one-stop “*Crisis and Emergency Outside Hong Kong*” webpage (cedars.hku.hk/overseasemergencyassistance) brings together information and support services available at the University such as insurance coverage and arrangement, engagement of the International SOS for provision of general assistance, local information and travel advice, key contact information of the University and Consulates, reminders before departure, and other useful tips and precautions.

Information for Non-local Students

CEDARS as a whole provides a range of support services to non-local students and CEDARS-Campus Life is your first contact. We offer you specific support upon admission into HKU.



Campus Life Support

- We provide information and assistance on non-academic matters
- We give assistance and guidance on:
 - Cultural adjustment tips
 - Visa and immigration formalities
 - Housing services
 - Orientation programmes (Weeks of Welcome)
 - Setting-in support
 - Social and networking opportunities

Why talk to us?



- We are experienced in helping students
- We understand the university system
- We have knowledge of issues affecting non-local students
- All discussions are confidential
- We can refer you to other services, if necessary

CEDARS – Campus Life

Address: 3/F, Meng Wah Complex
Email: cedars@hku.hk
Website: cedars.hku.hk/wow





Visa Matters

Who should apply for a student visa?

Generally speaking, if you wish to study in Hong Kong and you do not have the right of abode or right to land in Hong Kong, you need to apply for a student visa / entry permit to Hong Kong.

When to apply?

You should proceed with your student visa application as soon as you receive a conditional / confirmed offer of admission.

Visa sponsor office

For all international students (except summer programme participants) and Mainland research students, please contact Centre of Development and Resources for Students (CEDARS).

Website: cedars.hku.hk/wow (Visa)

Email: cedars@hku.hk

For exchange students, undergraduates and taught postgraduates from the Mainland, please contact China Affairs Office (CAO).

Website: cao.aal.hku.hk/student-visa

Email: visaapp@hku.hk

Please refer to the website of your respective visa sponsor office for detailed information on visa application procedure.

Family Matters



Should I bring along my own family?

Before making a decision whether or not to bring your family to Hong Kong, it is important to consider the following issues:

- The airfare expenses for your family to and from Hong Kong
- Additional accommodation expenses as you may need to rent a larger flat
- Extra cost for food, clothing and other necessities
- Restricted employment opportunities for your spouse
- Provision of child care facilities
- Whether your children will adjust well to schools in Hong Kong
- English-speaking schools are mostly privately run and expensive
- The impact on you and your studies if your family is not happy in Hong Kong
- Whether you will come to Hong Kong first and arrange things for your family, or bring your family to Hong Kong together with you

Financial Matters



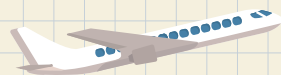
How can I transfer money to Hong Kong for use on arrival if I do not have a bank account in Hong Kong?

This can be done, either

- by instructing an overseas bank one or two weeks prior to your departure. Arrange to send money in your name to a bank in Hong Kong (both HSBC and the Bank of East Asia have branches on the HKU campus); or
- by carrying traveller's cheques or bank drafts for deposit into a local account (personal cheques can also be deposited but may take up to three weeks to be cleared).

How much money should I bring to Hong Kong?

There are usually significant extra expenses in the first month of your stay, such as rental charges, household items and textbooks. On top of the tuition fees, expenses for the first month can amount to HK\$10,000 or more for a student. It is important to have a realistic idea of the amount of money you will need and plan accordingly.



You are advised to bring enough cash, traveller's cheques, or bank drafts to cover expenses of at least your first month. Do not, however, carry too much cash at any time.

You can obtain a bank draft or transfer money to a bank account in Hong Kong through your local bank. Keep in mind that it may take some time to cash a bank draft with a large amount of money. Money transfers should be arranged well before your departure.

The official currency of Hong Kong is Hong Kong Dollar (HK\$). You can exchange Hong Kong Dollar with foreign currency or traveller's cheques according to the daily exchange rates at any banks or money exchange shops in Hong Kong.

Will I have access to banks and automated teller machines (ATM) on campus?

There are two banks and ATMs located on campus:

HSBC branch + ATMs (Tel: (852) 2233 3000)

The Bank of East Asia branch + ATMs (Tel: (852) 3609 1812)

Bank of China branch (ATM only)

Check their locations at www.maps.hku.hk.

Can I take up part-time employment and summer jobs?

Under the existing immigration regulations, non-local students in full-time full-degree programmes are allowed to work at the designated operators on the HKU campus for up to 20 hours per week during term time. They can also work full-time during the summer months within the currency of their limit of stay while they remain as a student at HKU. For details, please visit cedars.hku.hk/wow (Visa).

While some students can earn extra money from part-time and vacation work, availability of suitable jobs is not guaranteed. It is not advisable to plan your budget expecting to find work for the maximum allowable hours.



Medical Care

How do I access to specialist care or hospitalisation?

When specialist care and hospitalisation are required, you can consider using the services provided at public clinics and general wards of government hospitals. The charge for those holding a Hong Kong Identity Card (HKID card) is subsidised. Non-local students without a HKID card are required to pay full fees for services and hospitalisation in government hospitals.

For details of the fees charged by government hospitals, please visit www.ha.org.hk (Services Guides → Fees and Charges).

Insurance Coverage

Do I need to get my own medical insurance?

Non-local students who are going to spend more than 180 days in Hong Kong are eligible to apply for a Hong Kong Identity Card (HKID card). As it takes time to obtain the HKID card, you are strongly advised to get your own medical insurance to cover your first month of stay. Visiting students staying at HKU for less than 6 months are strongly recommended to purchase private medical and hospital insurance to cover the whole period of your stay in Hong Kong. If you plan to travel around Asia, you are advised to purchase medical insurance that cover all the countries that you plan to visit as well.

Many insurance policies are strictly on a reimbursement basis. Non-local students, even with insurance coverage, may have to settle the medical bill first before you can claim reimbursement. It is important for you to check carefully with your insurance company on the extent of coverage and claim procedures, and set aside a sum of money for contingencies.



Weeks of Welcome (WoW)

What kinds of induction activities are available?

A series of induction activities for newly arrived non-local students are available. The activities, which are a mixture of fun, fact finding, visits and tours, aim to help the newly arrived to settle down, induct into the local way, enhance cross cultural experience and sharing, and get to know about the new environment and people. Local students will serve as student hosts to lead these activities and introduce HKU and Hong Kong to new students.



Learn more: cedars.hku.hk/wow

Non-local Students under the age of 18



What information do I need to know if I am under 18?

1. Student visa application

Your parent needs to nominate a local Hong Kong resident to be your guardian when applying for a student visa. Details of the guardian and nomination form should be attached to your visa application set. Please consult the office of your student visa sponsor (see p.31) if you have further enquiries.

2. Hong Kong Identity Card

If your parents have nominated a relative to be your local guardian to the Hong Kong Immigration Department, you should be accompanied by that local guardian when you submit your Hong Kong Identity Card application at the Hong Kong Immigration Department.

If your parents have nominated “The University of Hong Kong” to be your local guardian, you can just submit your application to the Hong Kong Immigration Department on your own. You will be asked to fill in a declaration form there.

Campus Maps

Sassoon Road Campus Map



Main Campus Map





cedars

Centre of Development and Resources for Students
The University of Hong Kong
香港大學學生發展及資源中心