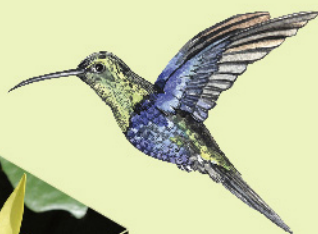




cedars

Centre of Development and Resources for Students
The University of Hong Kong
香港大學學生發展及資源中心



HKU PREPARATORY GUIDE

FOR
NON-LOCAL
STUDENTS
2015-2016

TABLE OF CONTENTS

Welcome

Introducing the Centre of Development and Resources for Students (CEDARS)

Planning Your Stay

- Academic and Admission Matters
- Accommodation
- Cultural Adjustment & Life in Hong Kong
- Family Matters
- Finances
- Medical Care and Insurance: Keeping Well
- Special Educational Needs (SEN) Support
- Students Under 18
- Visa Matters

Arriving Hong Kong

- Airport Reception Service
- Getting to HKU
- HKU Weeks of Welcome, Orientation and Induction Programme
- iMAP





Life at HKU

- Catering: Where to Eat
- Language and Student Clubs
- Learning Spaces
- Student Amenities and Global Lounge
- Student Attire and Smoke-free Campus
- Student Sports and Recreation

Appendices

- Dates of Semesters
- Directory
- International Student Profile
- Map
- Pre-departure Checklist

Instructions to Taxi Drivers

- Telling the Taxi Drivers to Go to your Student Residences



WELCOME

The University of Hong Kong welcomes non-local students and has much to offer, both academically and culturally. As you are preparing to study at The University of Hong Kong, the historical and premier university in HKSAR, you may wish to have some ideas about the wide range of academic and non-academic services that we provide. This guide is intended to give you some information along with practical tips to ease your adjustment to the University. My colleagues and I look forward to working with you closely to make your stay in HKU a very fruitful and rewarding experience. Thank you.

Albert Chan.

Dr. Albert Chau
Dean of Student Affairs

January 2015

INTRODUCING THE CENTRE OF DEVELOPMENT AND RESOURCES FOR STUDENTS (CEDARS)



Non-local Student Services –

We are your first contact

CEDARS as a whole provides a range of support services to non-local students. The Campus Life section is your first contact. We offer you specific support upon arrival.



Campus Life Support

- We provide information and assistance on non-academic matters.
- We give assistance and guidance on:
 - Visa and immigration formalities
 - Accommodation
 - Orientation and cultural adjustment

Why talk to us?

- We are experienced in helping students.
- We understand the university system.
- We have knowledge of issues affecting non-local students.
- All discussions are confidential.
- We can refer you to other services, if necessary.

Who are we?

Chief Student Advising Officer: Sylvia Wong (sylchan@hku.hk)

Accommodation Manager: Alan Ng (alanhyng@hku.hk)

Student Advising Officers:

Emily Wong (eypwong@hku.hk)

Wenkie Koo (wenkie@hku.hk)

Eva Poon (evapft@hku.hk)

Sandy Poon (sandyps@hku.hk)

Catering Manager: Sam Poon (swhpoon@hku.hk)

When can you meet us?

You can always come to our counter for general enquiries or make an appointment anytime to discuss your concerns and needs with a Student Advising Officer.



CEDARS
3/F, Meng Wah Complex
Tel: (852) 2859 2305
Fax: (852) 2546 0184
Email: cedars@hku.hk
Website: cedars.hku.hk



PLANNING YOUR STAY



Academic & Admission Matters

Founded in 1911, the University of Hong Kong is the oldest tertiary institution in Hong Kong. In 2014/15, HKU has a population of over 27,000 students. Among them, there are over 9,000 overseas students enrolled from about 100 countries. HKU ranked 1st in Hong Kong, 2nd in Asia and 28th in the world according to the 2014 QS World University Rankings.

HKU is a culturally diverse campus. It offers full-degree programmes and short term exchange programmes to non-local students. You can also choose to study at HKU as a “visiting student” for a short period of time. Details on admission criteria and procedures can be found on the website <<http://www.hku.hk/admission>>.

Reasons for choosing HKU

- Global recognition: 1st in Hong Kong, 2nd in Asia, 28th in the world (QS World University Rankings 2014).
- Diverse overseas opportunities: over 310 exchange partners, including some of the most prestigious universities in the world, semester-based programmes, summer programmes, overseas research opportunities, service learning, field trips, internships, etc.
- Vibrant and diverse student community: the largest number of non-local students (over 9,000) on campus among the University Grants Committee (UGC)-funded institutions.
- A promising future: 99.7% employment rate of graduates for eighth consecutive year and the highest employment rate among UGC-funded institutions.
- Full-fledged student support services: learning commons, halls, computer centres, labs, etc.
- Competitive costs of education by international standards.
- Exciting environment: Hong Kong is No. 1 student city in Asia (QS Best Student Cities 2015).

Important application dates for non-local students

Exchange programme

Partner schools nomination deadline:

September 2015 admissions

- March 15, 2015 (for students applying to the Faculty of Law)
- March 31, 2015 (for students applying to other Faculties); or

January 2016 admissions

- September 1, 2015 (for students applying to all Faculties)

➡ <http://www.hku.hk/exchange>

Undergraduate programme

International/Non-JUPAS Admissions Scheme 2015

For International students applying for the undergraduate programme:

- Fast Track: September to November 15, 2014
- Main Round: September to December 30, 2014
- Late: January to August 2015 (varies among different programmes)

➡ <http://www.hku.hk/admission>

For Mainland students applying for the undergraduate programme:

- Early December 2014 to June 15, 2015

➡ <http://www.hku.hk/mainland>

Scholarships

- International student entrance scholarships are available for undergraduate students.

➡ <http://www.hku.hk/international>

Research postgraduate programme

Application deadlines

Hong Kong PhD Fellowships (HKPF)*

- Initial application to the Research Grants Council: December 1, 2014 noon
- Full application to HKU: December 1, 2014
- Main round: December 1, 2014
- 1st clearing round: April 30, 2015
- 2nd clearing round: August 31, 2015

*All HKPF applications will also be automatically considered for the award of the University Postgraduate Fellowships (UPF).

Taught postgraduate programme

- Application is open from December 2014 (except some programmes offered by the Faculty of Architecture, Faculty of Business and Economics, Faculty of Education and Faculty of Social Sciences), with the deadline varying from programme to programme (please refer to the Postgraduate Prospectus).

Short-term visiting student

- Application deadline for admission in the first semester in September 2015: May 31, 2015
- Application deadline for admission in the second semester in January 2016: September 30, 2015

Summer programme

A choice of over 50 academic and experiential programmes – some of which are credit bearing.

- Programmes are normally held between mid-June and August.
- Applications open from mid-January to end of March.
- Visit www.hku.hk/summer for full details.

Student visa

- You should mail your visa documents to CEDARS immediately after receiving your admission package. Application closes 6 weeks prior to the commencement date of your programme.
- For Mainland exchange students, undergraduate and taught postgraduate students, please contact China Affairs Office <E-mail: visaapp@hku.hk> for help in your student visa application.

Halls or Residential Colleges

For exchange and undergraduate students

- September admission: May to August, 2015
- January admission: October to December, 2015

For postgraduate students

- Application is open throughout the year. Students are strongly recommended to apply as soon as they have received the offer letter of admission.

For details, please refer to the next section on “Accommodation”.



Accommodation

Accommodation for full degree undergraduate and exchange students (for full-time students only)

We have different types of accommodation to suit your needs:

(A) Halls (primarily for undergraduate students)

There are thirteen halls of residence, eleven of which are directly administered by the University, while two are financially and administratively independent of the University. These halls vary considerably in size and character. They are basically undergraduate halls, but they also accept a small number of postgraduate students. Halls assign 30%-33% of their places to non-local students. Competition for hall places is keen.



Hall Culture: Is it for you?

The halls of HKU are committed to the personal and social development of their members. They are part of the education system, rather than a mere provision of accommodation. Hall members are expected to take full advantage of this experience and to participate actively in a wide range of hall activities.

The halls are also known for their strong hall spirit. Members identify very strongly with their halls. Each hall has its own tradition, culture and unique characteristics.

(B) Residential Colleges (for undergraduate and postgraduate students in UGC-funded programmes)

There are also four Residential Colleges (Jockey Club Student Village III – Shun Hing College, Chi Sun College, Lap-Chee College and New College) for 1,800 students.

The Residential Colleges have three distinctive features. First, as they are located within Kennedy Town and next to many residential blocks, students will have very close engagement with the community. Students use their knowledge and skills to help build a better community and at the same time, learn and grow in the process.

Second, there is a strong intellectual and academic component. Through activities such as seminars, salons, talks and projects, students together embark on interesting intellectual journeys and explorations. Such activities will also benefit the rest of the University community.

Third, the Residential Colleges have strong representations of local, mainland and overseas students. There is a lot of in-depth cultural exchange. The students may also help Kennedy Town to develop into a multi-cultural community.

Finally, the Residential Colleges also build on the proud traditions of hall, e.g. identity, High Table Dinners, etc.

Residential Colleges assign about two-thirds of their places to non-local students.

Facilities in Hall & Residential Colleges

All halls and Residential Colleges have common rooms and recreational facilities. Each floor has its own pantry and is equipped with refrigerator, microwave oven, hotplate, water boiler and drinking fountain. Communal bathroom and toilet facilities are provided on each floor. All rooms are air-conditioned and are furnished with bed and mattress. Each student is provided with a wardrobe, writing desk with lamp, chair and bookshelf. Individual network point and a shared telephone line are provided in every room in most of the halls. Coin/smartcard-operated washing and drying machines are provided in every hall as well.

Hall & Residential Colleges Charges: Planning your expenses

The following table shows the fees (in HK dollar) for undergraduate students residing in the halls and residential colleges in 2014/2015. Fees are normally adjusted annually.

Halls	Lodging Fees	Compulsory Meal Charges
St. John's College	Single Room \$13,959 (282 residential days)	\$10,725.5
Ricci Hall	Single Room \$12,628 (287 residential days)	\$8,700
University Hall	Double Room / Shared Room \$12,408 (282 residential days)	\$8,800
Other university– administered halls ¹	Double Room / Shared Room \$12,408 (282 residential days)	Not applicable
Residential Colleges	Single Room \$18,612 (282 residential days) Double Room \$13,818 (282 residential days)	Not applicable. To be confirmed for next year.

¹ Swire Hall, Simon K.Y. Lee Hall, Lady Ho Tung Hall, Lee Hysan Hall, Lee Shau Kee Hall, Morrison Hall, R.C. Lee Hall, Starr Hall, Suen Chi Sun Hall and Wei Lun Hall.

- In 2014-15, the residential period is from 23 August 2014 to 1 June 2015 (282 residential days).
- If you are a resident of St. John's College, Ricci Hall or University Hall, you MUST join the meal plan of your hall. Please contact the office of your hall for the information and coverage of the meal plan.
- If you are a resident living in other halls / residences, you can have meals at catering outlets within the campus or nearby your hall. The cost will be around \$3,000 per month.
- Apart from the lodging fee (and the compulsory meal charges for the 3 halls), you will be required to pay some miscellaneous charges such as students' association membership fees, compulsory high table fees, room and / or smartcard deposits, etc. on a semester basis. The total ranges from HK\$1,000 to HK\$1,500 per semester while some of them may be refundable. The office of the hall / residence will give you an updated list of charges after you have been offered a place.
- After moving into the hall / residence in August and January, you will receive the invoices of the hall charges in October and February respectively via your HKU portal account. You will have to pay by cash (HK Dollar) or by bank transfer to a bank account of HKU (HSBC or Bank of East Asia). They have branches in campus of HKU.
- If you wish to stay in hall during the summer vacation (from June to August), you have to contact the office of your hall / residence by April for the application of summer vacation residence. Additional charges will be incurred.

University Halls and Residential Colleges

MAIN CAMPUS



Simon K.Y. Lee Hall

→ *for men and women*

→ *Shared room*

- on Main Campus (Pokfulam Road)

🏠 <http://www.hku.hk/skylee>

Swire Hall

→ *for men and women*

→ *Shared room*

- on Main Campus (Pokfulam Road)

🏠 <http://www.hku.hk/swire>



JOCKEY CLUB STUDENT VILLAGE I (POKFULAM ROAD)

Lady Ho Tung Hall

→ *for women only*

→ *Shared room*

- 91 Pokfulam Road
- within walking distance to the Main Campus

🏠 <http://www.hku.hk/hotung>

Starr Hall

→ *for men and women*

→ *Shared room*

- 91 Pokfulam Road
- within walking distance to the Main Campus

🏠 <http://www.hku.hk/starr>



JOCKEY CLUB STUDENT VILLAGE II

(POKFULAM ROAD)

Lee Shau Kee Hall

→ *for men and women*

→ *Shared room*

- 109 Pokfulam Road
- next to Flora Ho Sports Centre
- within walking distance to the Main Campus

🏠 <http://www.hku.hk/lshkhall>

Morrison Hall

→ *150 undergraduates (for men only)*

→ *150 postgraduates (for men and women)*

→ *Shared room*

- 109 Pokfulam Road
- next to Flora Ho Sports Centre
- within walking distance to the Main Campus

🏠 <http://www.hku.hk/morrison>

Suen Chi Sun Hall

→ *for men and women*

→ *Shared room*

- 109 Pokfulam Road
- next to Flora Ho Sports Centre
- within walking distance to the Main Campus

🏠 <http://www.hku.hk/scsweb>



SASSOON ROAD

Lee Hysan Hall

→ *for men and women*

→ *Shared room*

- 6 Sassoon Road
- next to the medical campus
- within a short bus ride from the Main Campus

🏠 <http://lhh.hku.hk>



R.C. Lee Hall

→ *for men and women*

→ *Shared room*

- 6 Sassoon Road
- next to the medical campus
- within a short bus ride from the Main Campus

🏠 <http://www.hku.hk/rcldhall>

Wei Lun Hall

→ *for men and women*

→ *Shared room*

- 6 Sassoon Road
- next to the medical campus
- within a short bus ride from the Main Campus

🏠 <http://www.hku.hk/weilun>



POKFULAM ROAD

University Hall

→ *for men only*

→ *Shared room*

- 144 Pokfulam Road
- within a short bus ride from the Main Campus
- has dining room, with compulsory meal plan for residents

🏠 <http://www.hku.hk/uhall>

Ricci Hall

→ *for men only*

→ *run by Jesuit Fathers*

→ *Single room*

- 93 Pokfulam Road
- within walking distance to the Main Campus
- has dining room, with compulsory meal plan for residents

🏠 <http://www.hku.hk/ricci>

St. John's College

→ *for men and women*

→ *an Anglican Foundation College*

→ *for students who study for full academic year*

→ *Single room*

- 82 Pokfulam Road
- opposite to the Flora Ho Sports Centre
- has dining room, with compulsory meal plan for residents

🏠 <http://www.hku.hk/stjohns>



JOCKEY CLUB STUDENT VILLAGE III

Residential Colleges

- Shun Hing College
- Chi Sun College
- Lap-Chee College
- New College

→ *for men and women*

→ *Shared room*

- 9 Lung Wah Street, Kennedy Town
- Launched in September 2012
- within a short bus or train (Mass Transit Railway) ride from the Main Campus

🏠 <http://www.shunhingcollege.hku.hk/>

🏠 <http://www.chisuncollege.hku.hk/>

🏠 <http://www.lapcheecollege.hku.hk/>

🏠 <http://www.newcollege.hku.hk/>



(C) Other Student Residences

When all hall or Residential College vacancies for non-local undergraduate students are filled, students will be assigned a place in a “non-hall” student housing like Pokfield Road Residences (PRR). *(see Accommodation for postgraduate students below).*

The lodging fee for undergraduate students in PRR is same as that of other university-administered halls or residential colleges. In addition, residents will be charged for air-conditioning fees and they have to pay smartcard deposits.

Application Procedures:

The Centre of Development and Resources for Students (CEDARS) coordinates and places newly admitted non-local undergraduate students into halls and non-hall student housing. As soon as you are admitted to the University, you may submit your application. The online application form is available under “Accommodation for non-local students” of the CEDARS website at <http://cedars.hku.hk>. You will normally be notified of your application result in late July (for students admitted for the first semester) or in early December (for students admitted for the second semester).

Outside Accommodation – Bursary Scheme

CEDARS has introduced “Bursary Scheme for Outside Accommodation” since the academic year of 2009-10 to non-local undergraduate students in order to enrich their residential experience. The Scheme serves good educational value for non-local students if they live in the community. Students can understand more and be better integrated into the local community. If a few students team up to rent an apartment, they can also learn to take care of and collaborate with one another. For details, please contact Accommodation Service at accommodation@cedars.hku.hk.

Accommodation for postgraduate students

The University has a few postgraduate residences that are independently managed. You should contact these residences directly for applications and enquiries.

(A) Graduate House (UGC-funded programmes only)

Located on the Main Campus, Graduate House provides air-conditioned accommodation for 200 postgraduate students. There are 190 single rooms with a shared bathroom between two adjacent rooms and 10 double rooms with private bathrooms. Approximately 80% of residents are from overseas.

Monthly charges (in Year 2014-15):

- Single room: HK\$2,912
- Double room: HK\$5,335 (for married couples without children)
(Occupants are required to pay the monthly electricity charges of their own bedrooms)
- Security deposit: one month's rent
- Key deposit: HK\$100

For enquiries about vacancies, please contact:

Mr. Dick Chow

Manager

Graduate House

University Drive

The University of Hong Kong

☎ (852) 2249 1800

☎ (852) 2546 1861

✉ gradhse@hku.hk

🏠 <http://www.hku.hk/gradhse>



(B) Wong Chik Ting Hall, St. John's College (All postgraduates)

It takes about 15-minute walk to the Main Campus and is well served by bus routes. Priority is given to research students. Residency for one complete year is preferred. The monthly charge for a room ranges from HK\$4,850 to HK\$ 5,400 (in Year 2014-15) (excluding utilities). All rooms are fully furnished and air-conditioned, with self-contained bathrooms.



For enquiries about vacancies, please contact:

Ms Tiffany Lam

College Admission and Registration Manager
St. John's College
82 Pokfulam Road
Hong Kong

☎ (852) 2817 7102

✉ stjohns@hku.hk

🌐 <http://www.hku.hk/stjohns>

(C) Pokfield Road Residences (All postgraduates)

Pokfield Road Residences can accommodate up to 262 postgraduate students in four types of flats: single flats, 2-bedroom flats, double/triple-shared flats and family flats. Priority is given to newly arrived non-local research students. (A small number of vacancies will also be set aside to meet the demand from non-local undergraduate students.) Residents can stay from one month up to twelve months, with possibility of extension of stay. The monthly lodging fee ranges from HK\$2,040 to HK\$4,080 (2014-2015).

The Residence is within walking distance to the University's Main Campus (within 20 minutes) and Flora Ho Sports Centre (within 10 minutes).





Facilities:

All flats come with en-suite bathrooms, domestic washing machines and are fully furnished with beds, wardrobes, study desks, chairs and telephone connection. Each flat also contains a small kitchen area with a sink, cupboards, a gas-stove and a small refrigerator for the preparation of light meals.

While lodging fee includes utilities cost, air-conditioning is payable and activated by a smartcard device. Residents are responsible for cleaning their own flats, the communal bathroom and kitchen facilities.

For enquiries, please contact:

Mr. Alan Ng

Accommodation Manager
Pokfulam Amenities Centre
Pauline Chan Building
10 Sassoon Road, Hong Kong

☎ (852) 3917 7543

☎ (852) 2819 7973

✉ pflac@hku.hk

🏠 <http://www.hku.hk/pflac>

(D) Morrison Hall (UGC-funded programmes only)

Founded in 1913, Morrison Hall is one of the oldest halls in the University. The Hall was closed down in 1968. Yet, with the efforts of the “Morrisonians”, a campaign for the rebuilding of Morrison Hall was initiated in late 1990s. The new building is located near the Flora Ho Sports Centre. All rooms are double rooms fully furnished with air conditioning and access to the campus network. There is a common bathroom and a pantry on each floor. It provides 150 residential places for both male and female postgraduate students. Priority will be given to newly arrived research postgraduates. It also consists of an undergraduate residence which accommodates 150 male students. All Morrisonians are expected to interact with each other through formal as well as informal hall activities. The monthly lodging fee for each postgraduate student is around HK\$1,600, subject to annual review.

For enquiries, please contact:

Ms Christina Lo

Manager
109 Pokfulam Road
Hong Kong

☎ (852) 3604 2014

☎ (852) 2855 7192

✉ jockeyv2@hku.hk

🏠 <http://www.hku.hk/morrison>



(E) Residential Colleges (Shun Hing College, Chi Sun College, Lap-Chee College and New College) (UGC-funded programmes only)

The areas of a single room and a double room are about 8 and 15 sq.m respectively. All rooms are furnished with beds, wardrobes, writing desks with lamps, chairs and bookshelves. Also, rooms are connected to the HKU Campus Network with data ports for internet access.

Laundry and air-conditioning services are operated by a 'pre-paid smartcard' device. Each floor has a communal pantry equipped with hot and cold drinking water supply, hot plates, microwave oven, refrigerator and television. There are communal washrooms and shower stalls on each floor as well.

There is a five-storey podium housing multi-purpose common rooms for various social and academic-related activities.

In 2014-5, about 47% of the vacancies is for postgraduates in the Colleges. In the long run, the proportion of undergraduates to postgraduates will be 1:1. The monthly lodging fee for each postgraduate student is around HK\$2,400 (double room) and HK\$3,000 (single room), subject to annual review.

For enquiries, please contact:

General Office

Jockey Club Student Village III

9 Lung Wah Street, Kennedy Town,
Hong Kong

☎ (852) 3917 1419

☎ (852) 2872 6635

✉ jockeyv3@hku.hk

🌐 <http://www.jockeyv3.hku.hk>





(F) Robert Black College (for short stay only)

Robert Black College provides accommodation primarily for overseas visiting scholars. There are a few vacancies for students.

Applicants can choose from a variety of accommodation, including single rooms, twin rooms, suites and apartments. All bedrooms have their own showers, and are air-conditioned and furnished with a refrigerator, television, radio and telephone. There is also access to the University's computer network in every room. Computers, fax machines and other facilities are also provided in the communal areas for residents' use. For enquiries, please contact:

Ms Catherine Lok
Manager

☎ (852) 2549 3719
✉ rblack@hkusua.hku.hk
🏠 <http://www.hku.hk/rblack>

Off-campus University Rented Accommodation (All postgraduates)

The University has rented a small number of flats in Sai Ying Pun (西營盤) for those students who are interested in living in off-campus housing owned by private landlords. These off-campus flats are located within walking distance to Main Campus and are well served with facilities such as shops, banks and restaurants. Priority will be given to newly admitted non-local postgraduate students. Monthly lodging fee is from HK\$4,000 up, (2014-2015), inclusive of utilities and wireless internet connection.

**For enquiries about vacancies,
please contact
Mr. Alan Ng**
Accommodation Manager

☎ (852) 2859 2305
✉ accommodation@cedars.hku.hk



Accommodation for married students and dependants

The University does not have any accommodation facilities specifically provided for married students and their dependants. However, they may apply for the rooms run by the Robert Black College (monthly rental ranges from HK\$7,000 to HK\$20,000) for temporary stay. In the long run, they need to rent a private flat outside the campus. Graduate House and Pokfield Road Residences also have limited residential places for married couples without children.

Off-campus Privately Rented Accommodation: An option for all

Privately rented accommodation is another option for you. Private accommodation is relatively more expensive than living in halls. Most landlords look for long-term tenancy of at least a year. If you wish to look for privately rented accommodation, you are strongly advised to arrive earlier, so that you will have ample time for property inspection and rental negotiation. The monthly rental starts from HK\$4,000 up for a small single room and HK\$10,000 or more for a flat. A set of guidelines on tenancy matters can be found under “Accommodation” section on our website at <<http://cedars.hku.hk>>.



Hotels and Hostels in Hong Kong

There are a number of hotels and hostels in Hong Kong, in which students can stay either short-term or long-term. Please visit the CEDARS website and go to “Accommodation” for information.



Temporary accommodation on campus

A few guest rooms are available in some halls for students to stay temporarily. For those who need temporary accommodation, they should contact the following hall offices directly for reservation and information:

Hall	Email Address	Telephone No.
Lee Hysan Hall	lhhall@hku.hk	(852) 2986 5110
R. C. Lee Hall	rcldhall@hku.hk	(852) 2986 5250
Simon K.Y. Lee Hall	skyhall@hku.hk	(852) 3917 0300
St. John's College	stjohns@hku.hk	(852) 2974 3500
Starr Hall	starr@hku.hk	(852) 3156 7575
Swire Hall	swwarden@hku.hk	(852) 2105 6600
Wei Lun Hall	weilun@hku.hk	(852) 2986 5300



Cultural Adjustment and Life in HKSAR

Hong Kong Culture

Language

Hong Kong is a cosmopolitan society. Chinese is the major ethnic group. Locals speak the dialect of Cantonese. Most people speak Cantonese and understand English, though fluency of the latter may not be perfect. Putonghua is commonly heard and spoken nowadays. Some locals may have difficulties in communicating with you, particularly if you have strong regional accents. You may also find that you have difficulties in understanding them at first. Just be patient. Try to speak slowly. Avoid colloquialisms and jargons if you can. When communication becomes really difficult, remember the magic word “smile”. It works across all cultures.



Social Customs and Behaviour

- It is common to call your peer's first name. It is always safe to address the elders and seniors in the social circles with their titles such as Mr. Chan, Dr. Wong, Professor Lee, etc.
- It is advisable to give your Chinese friends plenty of personal space, particularly if you do not know them well. If you are interacting with the locals, avoid the common western gestures like back slapping, and nudging as most Chinese find them uncomfortable.
- Do not push ahead of others who are waiting in a queue.
- It is not polite to ask a newly acquainted person about his or her income or marital status.
- Squatting on the street and spitting or speaking loudly in public area is regarded as "uncivil" acts. Putting your feet on a chair or on a train seat is deemed as "very bad manner".
- Modesty is highly valued by the Chinese. Display of intense affection, temper or anything "extreme" will very often be frowned upon.
- The concept of "face" (dignity) is very important for the Chinese. Refrain from making criticism and personal remarks on social occasions.

Chinese Festivals

Hong Kong celebrates many traditional Chinese festivals. The most important one is the Chinese New Year, which usually falls in January/February. Classes will be suspended and university offices will be closed.

More information on Chinese festivals can be found at:
www.discoverhongkong.com

Daily Living in Hong Kong

The University campus is well served by train (Mass Transit Railway), buses and green mini-buses. Eligible students can apply for a “Student Octopus Card” in October every year. Details can be found at <<http://www.mtr.com.hk>>.

Generally Hong Kong is a safe city with many well-lit roads. Public transportation services also operate till midnight throughout the week.

If you wish to learn about the other facets of “HK life” such as transportation, money matters, cultural events, tourism spots, you can surf the official websites such as <<http://studyinhongkong.edu.hk>> and <<http://discoverhongkong.com>> before departing to Hong Kong. Essential information is also listed on CEDARS website at <<http://cedars.hku.hk/nonlocal/incoming.html>>. You are strongly recommended to pick up a copy of “Guide for Newcomers” at the CEDARS office upon arrival.

Suggestions for Your Better Adjustment to Hong Kong

- Examine your expectations
- Listen and observe
- Ask questions and seek clarification
- Keep an open mind on cultural differences
- Keep your sense of humour
- Be prepared for anxiety and frustration
- Get involved in student activities
- Explore the local culture of Hong Kong
- Actively interact with local students and introduce your culture to them
- Learn basic Cantonese (Do consider participating in the “Survival Cantonese” Programme jointly organized by CEDARS and Chinese Language Centre. For enquiries, please refer to “Language Support” (see p.51) or send an email to cedars-cope@hku.hk)

On-line University Adjustment Tips

- FAQ videos on successful university life
🏠 <http://cedars.hku.hk/faq>
- Successful university adjustment website
🏠 <http://cedars.hku.hk/fye>
- Adjustment tips for non-local students
🏠 <http://cedars.hku.hk/tips4nonlocal>

Consultation Service offered by CEDARS

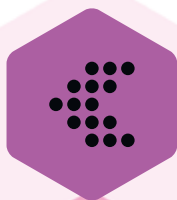
Professional Counselling Service

Individual counselling service is offered to all HKU students to handle university adjustment, personal and study issues, emotional problems, relationship problems and to improve psychological health.

We have a team of professional Clinical Psychologists and Counsellors. This service is confidential and free-of-charge. To make your first appointment, please call (852) 2857-8388, email cedars-cope@hku.hk or come to our Centre at Room 408, Meng Wah Complex. A 20-minute screening session will be conducted by the Duty Counsellor. After the screening, an appointment with your Case Counsellor will be arranged for you.

If you have a crisis or need urgent counselling, you can contact our office and the Duty Counsellor will advise you.

Office hours: Mondays to Thursdays, 9 am to 5:45 pm, Friday 9 am to 6 pm, Saturday 9 am to 1 pm.



Consultation Service offered by CEDARS
CEDARS (Counselling and Person Enrichment)
Room 408, 4/F, Meng Wah Complex
Tel: (852) 2857 8388
Fax: (852) 2517 6394
Email: cedars-cope@hku.hk
Website: <http://cedars.hku.hk/cope>



Family Matters

Should I bring along my own family?

Before making a decision of bringing your family to Hong Kong, it is important to consider the following issues:

- The airfare expenses for your family to and from Hong Kong
- Additional accommodation expenses as you need to rent a larger flat
- Extra cost for food, clothing and other necessities
- Restricted employment opportunities for your spouse
- Provision of child care facilities
- Whether your children will adjust well to schools in Hong Kong
- English-speaking schools are mostly privately run and expensive
- The impact on you and your studies if your family is not happy in Hong Kong
- Whether you come to Hong Kong first and arrange things for your family, or bring your family to Hong Kong together with you

Finances

Fees and Expenses 2015-2016 (For Reference Only)



The following ESTIMATES are based on the charges for the year of 2014/15 only. Fees and charges are expected to increase on an annual basis.

Major expenditure (in HK dollar)

Items	Undergraduate Students	Postgraduate Students
Academic		
Tuition fees (for 2014-15 cohort)	\$135,000 p.a.* <i>*This is for UGC-funded programmes only. For self-financing courses, the fees vary from programme to programme.</i>	For students of taught courses, you need to check the tuition fees with Faculty office as fees vary from programme to programme. For research students: \$42,100 p.a.
Other University expenses	\$350 Caution money + \$240 Student Union Fees	\$350 caution money
Academic expenses (e.g. books and supplies excluding PC & accessories) Some courses also have significant expenses relating to overseas fieldtrips and special equipments.	Around \$7,000 - \$30,000 p.a.	Around \$10,000 - \$40,000 p.a.
Housing		
Lodging fees of the University's residential halls & colleges	\$13,000 - \$25,000 p.a. (282 residential days)	\$15,000-\$60,000 p.a.
Hall miscellaneous charges	\$1,600-\$3,000 p.a. <i>These include hall association entrance & subscription fees, high table dinner fees, key deposits etc, excluding air-conditioning charge which varies with individual lifestyle & seasons (approximately \$200 per month in summer).</i>	
Compulsory hall meal charges (for certain halls only)	\$8,800 - \$11,000 p.a. (not all meals are covered)	

Items	Undergraduate Students	Postgraduate Students
University-administered non-hall housing	\$13,000 p.a.	\$20,000 to \$42,000 p.a.
Privately rented accommodation	Single room from \$40 per sq.ft. up, excluding utilities.	
Other Expenses		
Personal expenses (depending on your lifestyles and assuming buying from campus caterers)	Around \$4,200 per month up	
You also need to budget for your entertainment, overseas travel, insurance and medical expenses, etc.		

The following tables give you some reference figures on common meal and transportation items:



Meal Expenses (on-campus catering outlets)

Items	Price range (HK\$)
Breakfast	15 – 25
Tea	15 – 25
Lunch	11 – 30
Dinner	18 – 40
Sandwiches	10 – 30
Bakeries	8 – 20
Salads	15 – 35
Hot Beverages / Coffee	6 – 25
Cold Beverages / Coffee	7 – 27
Snacks	5 – 20

Transportation Cost

HKU student's frequent routes	Fare (HK\$)	Means of public transport
Sassoon Road to Main Campus	2	By University shuttle bus
	5 to 11	By bus or mini-bus
Main Campus to Central	5 to 9	By bus or MTR
Main Campus to Causeway Bay	7 to 11	By bus, minibus or MTR
Main Campus to Mongkok	11 to 15	By bus, minibus or MTR
Residential Colleges to Main Campus	2	By University shuttle bus

Financial Aid

Like most countries, the HKSAR government or the University does not provide financial aid to non-local students. It is therefore important for you to plan your budget well and ensure that you will have adequate financial resources to cover all of your expenses during your stay in Hong Kong.

Scholarship

Postgraduate studentships/scholarships are available for those reading for a M.Phil. or Ph.D. degree. Further information is obtainable from the Graduate School. Website: www.gradsch.hku.hk

International student entrance scholarships are available for undergraduate students. You can find out more information at <http://www.als.hku.hk/admission/intl>.



Part-time and Summer Job

Under the existing immigration regulations, non-local students reading for a full-time full-degree programme are allowed to work at the designated operators on the HKU campus for up to 20 hours per week during term time. They can also work full-time during the summer period. For details, please visit the CEDARS website at <http://cedars.hku.hk/nonlocal/visa.html>.

While some students can earn extra money from part-time and vacation work, availability of suitable jobs is not guaranteed. It is not advisable to plan your budget expecting to find work for the maximum allowable hours.

Banking Arrangements: Making early provision

If you do not have a bank account in Hong Kong, you will need to transfer money for use on arrival. This can be done, either

- by instructing an overseas bank one or two weeks prior to your departure. Arrange to send money in your name to a bank in Hong Kong (both HSBC and the Bank of East Asia have branches on the HKU campus); or
- by carrying traveller's cheques or bank drafts for deposit into a local account (personal cheques can also be deposited but may take up to three weeks to be cleared).

The majority of banks are open from 9:00 a.m. to 4:30 p.m., Mondays to Fridays. Most establishments in Hong Kong accept major credit cards such as VISA, MasterCard and American Express but the University and most campus outlets accept cash or cheque only.

Documents for opening a savings account:

- Passport
- Student card and letter of admission
- Proof of your permanent address in your own country (e.g. original bank statement in English/Chinese, issued in the last three months, latest driving license in English/Chinese)
- Introducer or referee letter from home country's bank in English/Chinese (if any)
- Hong Kong Identity Card (if any)

Note:

1. Banks may require additional documents in opening of account or reject applications of persons from certain countries. Please allow more time to process your bank account. Ensure that you have brought along enough cash to live in for the first few months.
2. Students under 18, please refer to p.36.



Bringing money

There are usually significant extra expenses in the first month of your stay, such as rental charges, household items and textbooks. On top of the tuition fees, the first month's expenses can amount to HK\$10,000 or more for a student. It is important to have a realistic idea of the amount of money you will need and plan accordingly.

You are advised to bring enough cash, traveller's cheques, or bank drafts to cover expenses of at least your first month. Do not, however, carry too much cash at any time.

You will be able to locate banks and currency exchange services at the airport as well as on campus.

You can obtain a bank draft or transfer money to a bank account in Hong Kong through your local bank. Keep in mind that it may take some time to cash a bank draft with a large amount of money.

Money transfers should be arranged well before your departure.

There are two banks and four automated teller machines (ATM) located on campus:

HSBC + an ATM

(Tel: 852-2233 3000)

The Bank of East Asia + an ATM

(Tel: 852-3609 1812)

Bank of China

(ATMs only)

The official currency of Hong Kong is Hong Kong Dollar (HK\$). You can exchange foreign currency or traveller's cheques with Hong Kong Dollar according to the daily exchange rates at any banks or money exchange shops in Hong Kong.





Medical Care & Insurance: Keeping well

The University provides comprehensive primary health care to entitled students through a clinic on the Main Campus. Medical consultations are generally free of charge. Certain medications, preventive services and other items are charged at cost. A notional charge is also levied for dental treatment and physiotherapy treatment at the University clinic.

When specialist care and hospitalization are required, students can consider using these services provided at public clinics and general wards of government hospitals. The charge for those holding a Hong Kong Identity Card is subsidized. Non-local students without a Hong Kong Identity (HKID) card are required to pay full fees for services and hospitalization in government hospitals. You may be eligible to apply for a HKID card if you are going to spend more than 180 days in Hong Kong. As it takes time to obtain the HKID card, you are strongly advised to get your own medical insurance to cover your first month of stay. Visiting students staying at the University for less than 6 months are strongly recommended to obtain their own 'insurance cover' for the whole period of their stay in Hong Kong.

Non-local persons without a HKID card have to pay FULL FEES for services and hospitalization in Government Hospitals. The public charges are as follows:

Deposit	Around HK\$ 60,000 to be paid upon admission	
Room charge per day	General Ward	HK\$4,680
	High Dependency Ward	HK\$12,000
	Intensive Care Ward	HK\$23,000
Operation cost	HK\$5,530 to HK\$17,650 (for minor surgery)	
	HK\$65,700 to HK\$430,000 (for ultra major surgery)	
	This does not include charges for tests, X-rays, cast, medication and follow up checks etc.	

Fees are adjusted upward annually. The above charges are for reference only. Patients need to settle all outstanding charges before discharge.

Please note that many insurance policies are strictly on a reimbursement basis. International students, even with insurance coverage, may have to settle the medical bill first before you can claim reimbursement. It is important that you check carefully with your insurance company on the extent of coverage, and the claim procedures, and set aside a sum of money for contingencies.

Further details are listed on the CEDARS website at
<<http://cedars.hku.hk/nonlocal/incoming/sl/healthcare.html>>

Support for Students with Disabilities and/or Special Educational Needs (SEN)



The University welcomes students with special needs. Students who have physical, sensor, mental, learning, developmental disabilities or SEN are encouraged to contact CEDARS-Counselling and Person Enrichment (CoPE) for the support service available.

Major service areas:

- Individual psychological counselling
- Training and consultation for learning enhancement
- Loan or purchase of study aid
- Application for special examination arrangements
- Special housing arrangements

Please visit "SEN Support" under the CEDARS website (<http://cedars.hku.hk/cope>) or email cedars-SEN@hku.hk for details.

Our staff will work closely with you and assist you in achieving a rewarding and successful university life.

UNDER 18

Students Under 18

You may still be under the age of 18 at the time of admission to HKU. In this case, your parent/guardian is required to sign a consent form, without which the University may have difficulty in arranging some of the teaching and learning activities, and accommodation for you.

You will be generally treated as an adult and are expected to lead your academic and social lives in HKU as other students. The University will correspond directly with you, but not your parents/guardians, on things related to you such as course enrollment, payment status of fees, academic status, results and grades, etc. Your parent/guardian will only be contacted in emergency or other situations where potential risks are involved.

Things to note:



Student visa application

Your parent needs to nominate a local Hong Kong resident to be your guardian when applying for a student visa. Details of the guardian and nomination form should be attached to your visa application set at time of application. Please consult CEDARS if you have further enquiries.



Banking arrangement

Students under 18 must be accompanied in person by their parent(s) or legal guardian to open a bank account at one of our local banks. The University is not able to act as your guardian in this context.



Accommodation

If you are in need of student accommodation and are successful in your application, you will only be housed in University student residences such as Halls, Non-halls and the Residential Colleges.

Visa Matters



Who should apply for a student visa?

Generally speaking, if you wish to study in Hong Kong and you do not have a right of abode in Hong Kong, you need to apply for a HKSAR student visa.

When to apply ?

As soon as you have received the admission letter.

Enquiries

For all international students and Mainland research students, please contact Centre of Development and Resources for Students (CEDARS).

🏠 <http://cedars.hku.hk/nonlocal/visaFAQ>

✉ cedars@hku.hk

For exchange students, undergraduates and taught course postgraduates from the Mainland, the contact office is the China Affairs Office.

🏠 <http://www.als.hku.hk/hkucao/>

✉ visaapp@hku.hk

Information on visa procedure can be updated anytime without prior notice.

ARRIVING HONG KONG



Arrival Reception Service



Every incoming exchange student and international student to HKU would be paired up with a buddy mentor around a month before the semester starts. Your buddy mentor would answer your queries mainly via email communication. Pickup service is not guaranteed as it is in fact very convenient for you to get to HKU campus from the Hong Kong International Airport. Nonetheless, your buddy mentors will be pleased to share some useful information with you as far as they could. Should you have any enquiries regarding the HKU Buddy Programme, please write to buddy@hku.hk.

Postgraduate students may contact the Postgraduate Student Association (PGSA) at [<pgsa@hku.hk>](mailto:pgsa@hku.hk) to enquire about the availability of reception service.



Getting to HKU

From Hong Kong International Airport to HKU

Hong Kong International Airport is situated in Chap Lap Kok on Lantau Island. (Fees are for reference only.)

Option 1

By Train &
By Taxi

Take the Airport Express Train from HK International Airport to Hong Kong Station, Central (train fare is HK\$100 and the train ride takes 25 minutes).

Then take a taxi from Central District to your hall (taxi fare: HK\$50 to \$80 + luggage fee; 20-minute ride to HKU halls).

Although there are green mini buses from Central to the campus, this is not recommended as they do not allow luggage.

Option 2

By Train
(Mass Transit
Railway)

If you would like to go to the University Main Campus, take the Airport Express Train from the Hong Kong International Airport to Hong Kong Station, interchange for HKU Station on Island Line. Exit A1/A2 will lead you to Main Campus while Exit C1 will lead you to Centennial Campus.

Option 3

By Bus &
By Taxi

Take bus No. A11 from the HK International Airport to Central (bus fare is HK\$40, 1-hour bus ride).

Then take a taxi in Central to your hall (taxi fare: HK\$50 to \$80 + luggage fee; 20-minute ride to HKU halls).

Option 4

By Taxi

If your budget permits, simply take a taxi from the HK International Airport directly to the hall, the cost is about HK\$350 and the travelling time is approximately 45 minutes.

Option 5

By Bus

If you are given a place in University Hall or Sassoon Road student halls, you can take the bus No. A10 at the HK International Airport. That will take you directly from the airport to the Pokfulam district. The fare is HK\$48.

From Hung Hom Railway Station to HKU

You can simply take a taxi at a cross harbour taxi stand from Hung Hom Station to HKU. The travelling time is about 40 minutes and the taxi fare is around HK\$150, plus luggage fee. As an alternative, you can take bus No. 103 to the HKU Main Campus.

從香港赤蠟角機場至香港大學

途徑有五:

- (一) 乘搭機場鐵路快線至香港總站，然後轉乘的士(即出租車)至香港大學。機場快線列車費用為港幣100元，的士費用大概為港幣60元。
- (二) 乘搭機場鐵路快線至香港總站，然後轉乘港島綫至香港大學站。香港大學站 A1或A2出口可到達本部校園，C1出口可到達百周年校園。
- (三) 若你只是攜帶輕便行李，你可選擇在機場乘搭巴士(即公共汽車) A11號至中環區，然後轉乘的士至香港大學。巴士費用為港幣40元，的士費用大概為港幣60元。
- (四) 你可在機場直接乘搭的士至香港大學，車費大概為港幣350元。
- (五) 若你住在大學堂宿舍或沙宣道學生宿舍羣，你可在機場乘搭機場巴士A10號至薄扶林區，巴士費用為港幣48元。

從港鐵紅磡車站至香港大學

在紅磡車站下車後，可直接乘搭過海的士直接到達香港大學宿舍或旅館。從紅磡到香港大學本部校園的路程約40分鐘而車費大概為港幣150塊。若你只是攜帶輕便行李，你可選擇乘搭103號隧道巴士直達香港大學本部校園(在香港大學東閘下車)及沿途宿舍(大學堂宿舍及沙宣道宿舍除外)。若你的宿舍位於沙宣道，你須在本部校園轉乘28號或10號公共小巴。

(以上費用只供參考)





HKU Weeks of Welcome (WoW), Orientation and Induction Programme

This is a series of orientation and induction programmes for newly arrived non-local students. You are free to choose from a series of activities to be offered at the beginning of the semester. The activities, a mixture of fun, fact finding, visits and tours, aim to help you to settle down, induct into the local way and to get to know about the new environment and people.

Visit the websites for non-local students:
<http://wp.cedars.hku.hk/web/nonlocal>

Besides the orientation and induction programmes for non-local students, CEDARS organises other activities for new students, such as the Inauguration Ceremony and High Table Dinner/Luncheon. All these activities are designed to help you integrate with the rest of the University and to cultivate your sense of identity as a member of HKU.



In order to facilitate your adjustment and adaptation to the HKU hall life, you are strongly encouraged to participate in the hall orientation activities which will normally take place in late August. You can find out more details from your own hall manager or Hall Association in early August.



iMAP

You will be invited to try out our iMAP, an online social networking platform. Membership is exclusively for the HKU community. Members can search for private accommodation nearby, look for roommates and other fellow students by interest, talent, nationality, their current location and overseas experience, etc. More information will be given to you by email nearer the time.

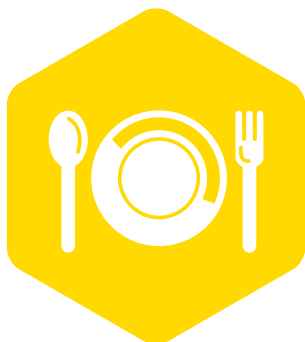
<http://cedars.hku.hk/imap>





LIFE AT HKU





Catering: Where to eat

Catering Outlets on the Campus

You can easily access to restaurants, café and kiosks located throughout the Main Campus, Centennial Campus, Sassoon Road Campus, Student Villages and Residential Halls along Pokfulam Road and Sassoon Road. Their locations and operating hours are listed below:

MAIN CAMPUS

Maxim's Food² [Canteen]

Local dishes, noodles, Chinese BBQ, Chinese cuisine and dim sum, made-to-order fried rice/ noodles, curry, pasta, sandwiches
4/F, Chong Yuet Ming Amenities Centre
7:30 a.m. – 9:30 p.m. (Daily)



cafe330 [Cafeteria]

Pasta, sandwiches, breads, desserts, salads, coffee
2/F, Chong Yuet Ming Amenities Centre
7:30 a.m. – 8:30 p.m. (Mon-Fri)
10:00 a.m. – 6:30 p.m. (Sat, Sun & Public Holidays)

Union Restaurant [Canteen]

Fast food, noodles, Chinese BBQ, SE Asian food
4/F, Haking Wong Building
7:30 a.m. – 9:30 p.m. (Daily)



FSCAC Restaurant [Canteen]

Fast food, noodles, Chinese BBQ, SE Asian food
2/F, Fong Shu Chuen Amenities Centre
7:30 a.m. – 8:00 p.m. (Mon - Fri)
11:00 a.m. – 2:00 p.m. (Sat)
Closed (Sun & Public Holidays)



Ebenezer's Kebab & Pizzeria [Halal Food Corner]

Halal fast food, kebabs, Biryani rice, curry, pizza, snacks, beverages
1/F, Fong Shu Chuen Amenities Centre
10:00 a.m. – 8:00 p.m. (Mon - Sat)
Closed (Sun & Public Holidays)

Pacific Coffee [Cafeteria]

Sandwiches, breads, pastry, puffs, salads, desserts, coffee
Global Lounge, G/F, Fong Shu Chuen Amenities Centre
8:30 a.m. – 9:30 p.m. (Mon - Fri)
9:00 a.m. – 5:30 p.m. (Sat)
Closed (Sun & Public Holidays)



Starbucks Coffee [Cafeteria]

Sandwiches, pastry, breads, salads, desserts, coffee
G/F, Main Library (Old Wing)
7:30 a.m. – 10:00 p.m. (Mon - Fri)
7:30 a.m. – 7:00 p.m. (Sat)
10:00 a.m. – 7:00 p.m. (Sun & Public Holidays)

Starbucks Coffee (Managed by HKUSU)

G/F, Composite Building, Main Campus
7:30 a.m. – 10:00 p.m. (Mon - Fri)
7:30 a.m. – 8:00 p.m. (Sat)
11:00 a.m. – 6:30 p.m. (Sun & Public Holidays)
Pasta, sandwiches, pastries, breads, salads, coffee

U-Deli (Managed by HKUSU)

G/F, Composite Building, Main Campus
8:00 a.m. – 7:00 p.m. (Mon - Fri)
10:00 a.m. – 4:00 p.m. (Sat)
Closed (Sun & Public Holidays)
Lunchboxes, snacks, beverages

*HKUSU stands for the University of Hong Kong Students' Union

CENTENNIAL CAMPUS

Grove Café [Restaurant]

Western deli, fine dining (dinner only), pasta, sandwiches, snacks, light food and beverages

LG/F, The Jockey Club Tower, Centennial Campus

7:30 a.m. – 10:00 p.m. (Mon - Fri)

8:00 a.m. – 10:00 p.m. (Sat)

8:00 a.m. – 9:30 p.m. (Sun & Public Holidays)



Delifrance [Restaurant]

Western fast food, sandwiches, desserts, coffee, tea, beverages

G/F, The Jockey Club Tower, Centennial Campus

7:30 a.m. – 9:30 p.m. (Mon - Fri)

8:00 a.m. – 8:00 p.m. (Sat, Sun & Public Holidays)

Super Super Congee and Noodle [Restaurant]

Congee, dumplings & noodles (Guang Dong style), dim sum, beverages

G/F, Run Run Shaw Tower, Centennial Campus

7:30 a.m. – 9:30 p.m. (Mon - Sat)

Closed (Sun & Public Holidays)



BIJAS Vegetarian [Restaurant]

Vegetarian food (Chinese), dim sum, buns, drinks

G/F, Run Run Shaw Tower, Centennial Campus

11:00 a.m. – 9:00 p.m. (Mon - Sat)

Closed (Sun & Public Holidays)

CATERING OUTPOSTS (MAIN CAMPUS)



Fru:yo Factory [Kiosk]

Frozen yoghurt, croissants, snacks, beverages

G/F, Chong Yuet Ming Amenities Centre

9:30 a.m. – 7:00 p.m. (Daily)

SUBWAY [Kiosk]

Submarine sandwiches, snacks, drinks
Run Run Shaw Podium
8:00 a.m.– 8:30 p.m. (Mon – Sat)
8:00 a.m. – 5:30 p.m. (Sun)
Closed (Public Holidays)



TWGHs iBakery [Kiosk]

Bakery products, coffee, beverages
Run Run Shaw Podium
8:30 a.m. – 7:00 p.m. or until stock lasts (Mon – Fri)
Closed (Sat, Sun & Public Holidays)

Mangrove (Tuck Shop) [Kiosk]

Lunchboxes, sandwiches, snacks, beverages
Covered podium of Main Library (near Sun Yat-sen Place)
10:00 a.m.– 4:00 p.m. (Mon – Fri)
Closed (Sat, Sun & Public Holidays)

POKFULAM ROAD STUDENT VILLAGES

Ho Tim Hall Restaurant [Restaurant]

Local dishes, noodles, Chinese dishes and entrée, made-to-order fried rice/noodles, curry, snacks, beverages
91 Pokfulam Road, Jockey Club Student Village I
11:00 a.m. – 9:30 p.m. (Daily)



C.C. Canteen [Canteen]

Local dishes, noodles, made-to-order fried rice/noodles, sandwiches, beverages
111 Pokfulam Road, Jockey Club Student Village II
8:30 a.m. – 9:00 p.m. (Daily)

SASSOON ROAD CAMPUS

HKJCBIR Café [Cafeteria]

Coffee, beverages, sandwiches, salads, pasta, desserts

4/F, Hong Kong Jockey Club Building for Interdisciplinary Research,
5 Sassoon Road

9:00 a.m. – 5:00 p.m. (Mon-Fri)

Closed (Sat, Sun & Public Holidays)

Bay View Restaurant [Restaurant]

Local fast food, noodles, dim sum, Chinese cuisine [Waiter-served],
pizzas, cake, coffee

LG/F, 6 Sassoon Road

7:30 a.m. – 9:30 p.m. (Daily)

Li Ka Shing Faculty of Medicine Restaurant [Restaurant]

Western cuisine

7/F, William M.W. Mong Block, 21 Sassoon Road

11:00 a.m. – 10:00 p.m. (Mon - Sat)

Closed (Sun & Public Holidays)

Garden Patio [Kiosk]

Lunchboxes, snacks, sandwiches, coffee and tea

Fun Pui Garden, LG/F, William M.W. Mong Block

11:00 a.m. – 10:00 p.m. (Mon - Sat)

Closed (Sun & Public Holidays)



SPORTS CENTRE

Stanley Ho Sports Centre [Kiosk]

Noodles, snacks, drinks

10 Sha Wan Drive, Stanley Ho Sports Centre

9:00 a.m. – 7:00 p.m. (Daily)

CYBERPORT PHASE 4

Delicious Corner [Restaurant]

Chinese cuisine, Chinese styled soup

L2, Block A, Phase 4, Cyberport,

100 Cyberport Road, Hong Kong

8:00 a.m. – 5:15 p.m. (Mon - Sat)

8:00 a.m. – 2:30 p.m. (Sat)

Closed (Sun & Public Holidays)



Off Campus

If you do not mind spending a bit more, there is a variety of restaurants serving different kinds of cuisines located within walking distance from the Main Campus along Bonham Road, downtown Sai Ying Pun and the nearby shopping arcade. You may also explore different international delicacies at the SOHO district (Central), adjacent to it is the famous Lan Kwai Fong where you can hang out, having drinks and enjoy chit-chat with your friends and fellows. A number of restaurants in town also serve specific food such as Halal food and Kosher Food.

Pizza and Burger

5-10 minute walk from East Gate

Bonham Road, High Street, downtown Sai Ying Pun or call-to-deliver

S.E. Asian Cuisine

5-10 minute walk from West Gate and East Gate respectively

The Westwood Shopping Arcade and Western Street

Western dining

5-10 minute walk from East Gate

Along Bonham Road, High Street

Chinese Restaurant and Dim Sum

10-15 minute walk from Main Campus

The Westwood Shopping Arcade, downtown Sai Ying Pun

Local Tea Restaurant

All within 10 minute walk from Main Campus

Along Bonham Road, Third Street, Water Street, Downtown Sai Ying Pun

Japanese Cuisine

10 minute walk from West Gate

The Westwood Shopping Arcade, Downtown Sai Ying Pun

Pubs, International Cuisine

10-20 minute by MTR, green minibus, bus, taxi from East Gate

SOHO District (Central), Lan Kwai Fong

Kosher Food

<http://cedars.hku.hk/catering/KosherRestaurant.pdf>



Further details on campus catering services and the reference menu of respective outlets can be viewed at <<http://cedars.hku.hk/catering>>.



Language

At HKU the official medium of instruction is English. If needs arise, you may make use of the “Practice laboratory” (self-access language learning facilities) run by the School of Modern Languages and Cultures. Details can be viewed at < <http://www.smlc.hku.hk/facilities/>>.

Chinese courses

Undergraduate students and exchange students can enroll in the credit-bearing Chinese courses run by the School of Chinese. The School runs Cantonese courses and Chinese Language Courses for foreign students. Research postgraduate students can also sign up for the non-credit bearing Cantonese classes offered by the Graduate School.

Language Support

Individual Peer Tutoring on Language (English and Cantonese)

To help newcomers better adjust to the learning and social environment at HKU and facilitate a greater integration of local and non-local students, CEDARS - Counselling and Person Enrichment Section (CoPE) and two language centres have jointly organized “Peer Language Tutoring Programme (both in English & Cantonese).”

Survival Cantonese

Non-local students who do not know Cantonese and wish to learn the basics are encouraged to join “Survival Cantonese”, which is jointly organized by CEDARS-CoPE and Chinese Language Centre. You will practise 30 daily use Cantonese phrases with local student tutors and gain a chance to befriend local students.

Peer English Tutoring

Half-hour English conversational practice sessions are offered to HKU



students who want to brush up **their** oral English skills. All English peer tutors are native or near native English speakers. This collaboration between CEDARS-CoPE and Centre of Applied English Studies (CAES) has proven to be an effective and popular initiative that benefits both tutors and tutees.

You can register as a tutee to learn from your peers, or become a Peer Tutor to help other students. Watch out for enrollment/recruitment notices from CEDARS-CoPE.

HKU jargons

HKU students have a lot of jargons like “submarine”, “superpass”, etc. It would be interesting to learn some of them from your buddy.



Learning Spaces

The University has the following learning spaces for students:

i) Chi Wah Learning Commons

The 6,000 m² Chi Wah Learning Commons (智華館) is located at the podium levels of the University's Centennial Campus. The facility, which spreads over three levels, is a technology-rich, shared or common space in which students, teachers and others can come together to interact, and participate in various kinds of activities held there. More information can be found on its website at <http://www.its.hku.hk/services/tl/lc/chi-wah>.





ii) University Libraries

Website: lib.hku.hk

For questions pertaining to library resources or services, please ask a librarian via one of the following means:

Information Counter (Level 3, Main Library)

Phone: (852) 3859 2203

E-mail: libis@hku.hk



iii) The Oval

Address: 1/F, Knowles Building



iv) The Curve

Address: 1/F and 2/F, K. K. Leung Building

v) Common Core Lounge

Address: Room 150, 1/F, Main Building

Student Clubs

The Hong Kong University Students' Union (HKUSU)

HKU is renowned for its vibrant campus life. Students enjoy a high degree of autonomy. The Hong Kong University Students' Union (HKUSU) is the largest student body on the campus. It is independent of the university administration and runs its own Co-op store and photocopying centre on the campus. It has more than 100 sub-organisations, each with distinctive objectives and functions, catering to the diverse interest of the student population. For the full list of student clubs and membership details, please refer to the HKUSU homepage at www.hkusu.org.



The Postgraduate Student Association (PGSA)

Postgraduate students may apply for the membership of the Postgraduate Student Association (PGSA). It aims to enhance the student life of postgraduate students by encouraging their participation in academic and social events. More can be found on its website at <<http://www.pgsa.hku.hk>>.



Chinese Students and Scholars Association (CSSA)

Chinese Students and Scholars Association (CSSA) welcomes new students, especially Mainland China students to apply for the membership. By maintaining the forum <www.hkucssa.com> and organising regular social activities, it provides support in campus life as well as in career. New members of CSSA will also get an information booklet (in Chinese) in which you can find detailed information about every aspect of your new journey. You may also ask questions on the forum or write to them at <hkucssa@hotmail.com> for tips before arrival.

The Chinese Students and Scholars Association Undergraduate Department (CSSAUD)

Undergraduate students coming from Mainland China are invited to join the Chinese Students and Scholars Association Undergraduate Department (CSSAUD). Its prime objective is to provide support and enrich campus life for mainlanders by organizing regular social activities. Some of the activities, especially Orientation Camp, Singing Contest, Welfare Week and graduation party, are well-received by members. Besides, every



year, CSSAUD will visit several main cities in China in July to meet newly admitted students to help them prepare for future university life and deliver an information booklet (in Chinese) to them. This booklet covers all sorts of HKU academic, recreational as well as daily life and experience information. More details can be found on their homepage at <www.cssaud.com>. You may also write to them at <cssaud@hku.hk> for tips before arrival.

In addition to the above student associations, non-local students may also like to join the following student societies:

- **International Society:**
<https://www.facebook.com/intlsoc>

The International Society encourages students of all backgrounds, cultures, and nationalities to join its growing organization. This English-oriented student society promotes integration and internationalization amongst HKU students by coordinating a wide array of activities, ranging from recreational gatherings to academic seminars. Members of the International Society not only receive premium networking opportunities that allow them to meet people from all over the world, but also the chance to collaborate and launch projects with their colleagues. The society also aims to serve as a platform for students from anywhere in the world to feel like they are at home-right here in HKU, so don't hesitate to contact them at hkuintlsoc@gmail.com or via their website at <www.hkuintlsoc.strikingly.com> today!

- **Muslim Students Association-HKU:**
<https://www.facebook.com/MSAHKUSU>
- **Korean Society, Arts Association, HKUSU:**
<https://www.facebook.com/koreansocietyaahkusu>



Student Amenities & Global Lounge



All HKU students can enjoy the facilities provided by three amenities centres (which are, Chong Yuet Ming Amenities Centre, Fong Shu Chuen Amenities Centre and Pokfulam Amenities Centre).

Facilities include:

- Breastfeeding room
- Meeting rooms
- Multi-purpose rooms
- Music rooms
- Prayer room
- Restaurants
- Shower rooms
- Student society rooms
- Supermarket
- Theatre (under renovation)

Powermart

Powermart, a convenience store, is also available on G/F, Cheng Yu Tung Tower, Centennial Campus.

Breastfeeding Room and Mother's Room

A Breastfeeding Room is located in Room 106, Chong Yuet Ming Amenities Centre. Users can a key from the Centre's office:

Address: Room 201, 2/F, Chong Yuet Ming Amenities Centre

Tel: (852) 2859 8006

Email: cymac@hku.hk

A Mother's Room is located in Room 5.27, The Jockey Club Tower in the Centennial Campus with the following facilities:

- a washing basin
- a diaper-changing table
- a sofa
- a small table
- electric sockets for electrical milk pumps, and
- a mirror

Opening hours: 9 a.m. to 5 p.m. from Monday to Friday, except public holidays.

Users would need to get the key from the Facilities Management Office, LG65, Centennial Campus (Tel: (852) 3917 8123).

Chapel

Both the St. John's College (an Anglican establishment) and Ricci Hall (run by the Jesuit priests) house a chapel outside the Main Campus.

Global Lounge

The Global Lounge serves as a platform for cultural diversity elements that the University proudly embodies following its continued growth in international student population. Through providing a venue for all types of interactions, informal gatherings, and multi-cultural and international activities such as cultural nights, exhibitions, and concerts to take place, the Global Lounge has offered a unique experience to HKU students and has established itself as a hub of students' social and cultural life at HKU.

The Global Lounge

📍 G/F, Fong Shu Chuen Amenities Centre

☎ (852) 2219 4549

✉ globallounge@hku.hk

🌐 www.hku.hk/globallounge

Facilities include:

- Internet café
- Open seating spaces with big screen plasma TV showing international channels
- Outdoor relaxing cafe seating
- Resources library with international newspapers and information on study abroad opportunities
- Cultural activities and student sharings



Student Attire and Smoke-free Campus

- There is no official dress code in HKU. Students normally dress casually for lectures and tutorials. It is a norm for students to put on business attire for class presentation. Formal dress code is required for formal functions like “High Table Dinner”, official ceremonies and special occasions. If you participate in competitions or sports games, you are expected to wear team’s uniform.
- HKU is a smoke-free campus. Smoking is not allowed on the campus.

Student Sports and Recreation



At HKU, there is a broad range of health, fitness, sport and recreational facilities and programmes to help make your stay in Hong Kong a fun and healthy experience. Sports fans can make use of the wide range of sports facilities at the Flora Ho & Lindsay Ride Sports Centres (indoor sports) on Pokfulam Road and the Stanley Ho Sports Centre (outdoor sports and athletics) in Sandy Bay, and the IHP ACTIVE on the Centennial Campus, which is a state-of-the-art fitness facility designed to further promote the health and fitness of the university community. You can find out more information from the Institute of Human Performance at <<http://www.ihp.hku.hk>>.





APPENDICES

Dates of Semesters for 2015-2016



For the dates of semesters of 2015-2016, please check with your Faculty.

Please visit the website of the Examinations Office of the Registry (<http://www.exam.hku.hk>) for the assessment periods of the 2015-2016 academic year. **Please do not confirm your return flights before your examination schedule is finalized.**

Directory

Halls and Residential Colleges:

Lady Ho Tung Hall 何東夫人紀念堂	🏠 91 Pokfulam Road 薄扶林道91號 ☎ (852) 3152 6500 ✉ lhthsa@hku.hk
Lee Hysan Hall 利希慎堂	🏠 6 Sassoon Road 沙宣道6號 ☎ (852) 2986 5110 ✉ lhhall@hku.hk
Lee Shau Kee Hall 李兆基堂	🏠 109 Pokfulam Road 薄扶林道109號 ☎ (852) 3604 2024 ✉ jockeyv2@hku.hk
Morrison Hall 馬禮遜堂	🏠 109 Pokfulam Road 薄扶林道109號 ☎ (852) 3604 2014 ✉ jockeyv2@hku.hk
R. C. Lee Hall 利銘澤堂	🏠 6 Sassoon Road 沙宣道6號 ☎ (852) 2986 5250 ✉ rclhall@hku.hk

Ricci Hall 利瑪竇宿舍	 93 Pokfulam Road 薄扶林道93號  (852) 2546 9201  riccihal@hku.hk
Simon K.Y. Lee Hall 李國賢堂	 Main Campus 薄扶林道本部校園  (852) 3917 0300  skyhall@hku.hk
St. John's College 聖約翰學院	 82 Pokfulam Road 薄扶林道82號  (852) 2817 7102  stjohs@hku.hk
Sarr Hall 施德堂	 91 Pokfulam Road 薄扶林道91號  (852) 3156 7568  sarr@hku.hk
Suen Chi Sun Hall 孫志新堂	 109 Pokfulam Road 薄扶林道109號  (852) 3604 2034  jockeyv2@hku.hk
Swire Hall 太古堂	 Main Campus 薄扶林道本部校園  (852) 2105 6602  swarden@hku.hk
University Hall 大學堂	 144 Pokfulam Road 薄扶林道144號  (852) 2550 6341  uhall@hku.hk
Wei Lun Hall 偉倫堂	 6 Sassoon Road 沙宣道6號  (852) 2986 5300  weilun@hku.hk
Residential Colleges 住宿學院 <ul style="list-style-type: none"> • Shun Hing College 信興學院 • Chi Sun College 志新學院 • Lap-Chee College 立之學院 • New College 日新學院 	 9 Lung Wah Street 龍華街9號  (852) 3917 1419  jockeyv3@hku.hk

Faculties and Schools:

Faculty of Architecture 建築學院	<p>🔍 http://fac.arch.hku.hk/</p> <p>☎ (852) 2859 2149</p> <p>✉ faculty@arch.hku.hk</p>
Faculty of Arts 文學院	<p>🔍 http://arts.hku.hk/</p> <p>☎ (852) 3917 8977</p> <p>✉ arts@hku.hk</p>
Faculty of Business and Economics 經濟及工商管理學院	<p>🔍 http://www.fbe.hku.hk/</p> <p>☎ (852) 3917 5343</p> <p>✉ fbeinfo@hku.hk</p>
Faculty of Dentistry 牙醫學院	<p>🔍 http://facdent.hku.hk/</p> <p>☎ (852) 2859 0390</p> <p>✉ dental@hku.hk</p>
Faculty of Education 教育學院	<p>🔍 http://web.edu.hku.hk/</p> <p>☎ (852) 2859 2544</p> <p>✉ edfac@hku.hk</p>
Faculty of Engineering 工程學院	<p>🔍 http://engg.hku.hk/</p> <p>☎ (852) 2859 2803</p> <p>✉ enggfac@hkucc.hku.hk</p>
Faculty of Law 法律學院	<p>🔍 http://www.law.hku.hk/</p> <p>☎ (852) 3917 2951</p> <p>✉ lawfac@hku.hk</p>
Li Ka Shing Faculty of Medicine 李嘉誠醫學院	<p>🔍 http://www.med.hku.hk/v1/</p> <p>☎ (852) 3917 9175</p> <p>✉ medfac@hku.hk</p>
Faculty of Science 理學院	<p>🔍 http://www.scifac.hku.hk/</p> <p>☎ (852) 3917 2683</p> <p>✉ science@hku.hk</p>
Faculty of Social Sciences 社會科學學院	<p>🔍 http://www.socsc.hku.hk/</p> <p>☎ (852) 3917 1234</p> <p>✉ socsc@hku.hk</p>
Graduate School 研究學院	<p>🔍 http://www.gradsch.hku.hk/gradsch/</p> <p>☎ (852) 2857 3470</p> <p>✉ gradsch@hku.hk</p>

Others

Academic Advising Office 學業指導處	http://aao.hku.hk/ ☎ (852) 2219 4686 ✉ aaooffice@hku.hk
Academic Services Office 學務辦公室	http://www.ase.hku.hk/ ☎ (852) 2859 2433 ✉ asoffice@hku.hk
Centre of Development and Resources for Students 學生發展及資源中心	http://cedars.hku.hk/ ☎ (852) 2859 2305 ✉ cedars@hku.hk
China Affairs Office 中國事務處	http://www.als.hku.hk/hkucao/ ☎ (852) 2241 5437 ✉ chinaaff@hku.hk
Finance and Enterprises Office 財務及企業管理處	http://www.feo.hku.hk/finance/ ☎ (852) 3921 2895 ✉ finance@fo.hku.hk
Office of International Student Exchange 國際學生事務處	www.hku.hk/exchange ☎ (852) 2219 4549 ✉ exchange@hku.hk
University Health Service 大學醫療保健處	http://www.uhs.hku.hk/index.php ☎ (852) 2859 2501 ✉ uhealth@hku.hk

Useful Websites

The University of Hong Kong
 Hong Kong Immigration Department
 Hong Kong International Airport
 Hong Kong Transportation
 Hong Kong Tourism Board
 Study in Hong Kong

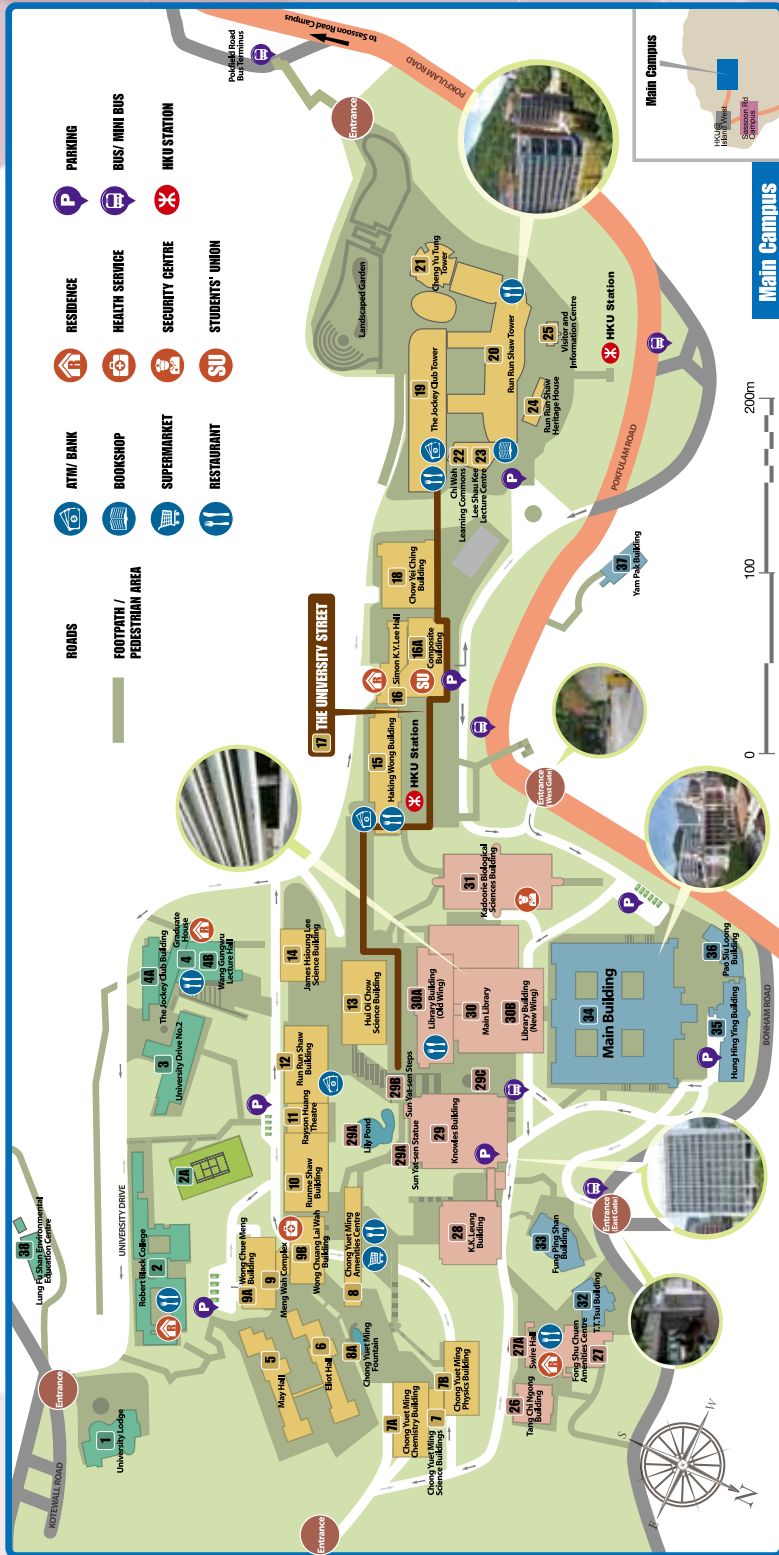
🔍 <http://www.hku.hk>
 🔍 <http://www.immd.gov.hk>
 🔍 <http://www.hongkongairport.com>
 🔍 <http://www.td.gov.hk/>
 🔍 <http://discoverhongkong.com>
 🔍 <http://studyinhongkong.edu.hk>

International Student Profile

In 2014-15, we have non-local students from the following places:

Albania	Ghana	Pakistan
Algeria	Greece	Panama
Angola	Guatemala	Peru
Argentina	Honduras	Philippines
Armenia, Republic of	Hungary	Poland
Australia	India	Portugal
Austria	Indonesia	Romania
Azerbaijan	Iran	Russia
Bangladesh	Ireland	Saudi Arabia
Barbados	Israel	Serbia & Montenegro
Belaruse, Republic of	Italy	Singapore
Belgium	Jamaica	Slovakia
Brazil	Japan	South Africa
Brunei	Jordan	Spain
Bulgaria Republic	Kazakhstan, Republic	Sri Lanka
Cambodia	Kenya	Swaziland
Canada	Korea, Republic of	Sweden
Chile	Korea, D.P.R.	Switzerland
China	Kuwait	Taiwan
Colombia	Lebanon	Tanzania
Costa Rica	Lithuania	Thailand
Croatia	Luxembourg	The Czech Republic
Cuba	Macau, SAR of PRC	Turkey
Denmark	Malaysia	U.K.
Dominican Republic	Mauritius	U.S.A.
Ecuador	Mexico	Uganda
Egypt	Mongolia	Ukraine
Eritrea	Morocco	Uruguay
Estonia	Myanmar	Uzbekista
Ethiopia	Nepal	Venezuela
Finland	Netherlands	Vietnam
France	New Zealand	Virgin Islands
Georgia, Republic of	Nigeria	Zimbabwe
Germany	Norway	

*Looking forward to
meeting you at HKU!*



Pre-departure Checklist

Visa Formalities

- You should have got your student visa label before you come to Hong Kong. Make sure that you show the page with the visa label to the immigration officer when you are at the immigration clearance counter. You will be issued with a landing slip and your student visa will be activated. Please keep the landing slip and check the information on it carefully.
- You need to come to CEDARS or China Affairs Office (CAO) to complete any outstanding visa matters upon arrival.

Accommodation

- For those who have already got a hall place, please ensure that you have informed the hall office of your arrival time. For those arriving at odd hours, make sure you have made arrangement either with your buddy or the hall on your check in procedures. You also need to purchase your own pillows and bed linens.
- For those who have not secured accommodation yet, please check out private accommodation options on iMAP. CEDARS accommodation service can also help you look for private accommodation nearby and advise you on tenancy agreement and rights.

HKU Weeks of Welcome

This is a series of induction activities for newly arrived non-local students. The highlight of programme is the Orientation Day for Non-local Students. You should have already received email inviting you to register for these programmes online or you can visit <cedars.hku.hk/wow> for details nearer the time.

Reception and Orientation

There is an array of orientation programmes for new students, run by various offices / student groups. Information is usually available on the websites of the respective offices nearer the time. Check this out before you come. Some programmes allow registration online even before your arrival.

Stay Connected

iMAP <cedars.hku.hk/imap>

Join the HKU iMAP, our online social networking platform to start connected

with the University community before you come to Hong Kong. iMAP is exclusively for HKU members. You have to log in with a HKU email account. Incoming non-local students will get a temporary account to access iMAP before they get their HKU email accounts. You will be notified of this at least 2-3 weeks before the start of the term. If you have not received such an email, please contact CEDARS at cedars@hku.hk.

Others

- Arrange health/medical insurance if necessary (refer to p.34). You should make additional provision if necessary.
- For visiting and exchange students only: Confirm the credit transfer arrangement with your own study abroad office. Make sure you know whether your home institution will give you credit for the classes that you complete at HKU.

Useful Links

- Adjustment Tips for Non-local Students: cedars.hku.hk/tips4nonlocal
- Video on Successful University Life: cedars.hku.hk/faq
- Registration dates and student card collection details: <http://www.cdqa.hku.hk>
- Curriculum structure and information: aao.hku.hk
- Student services and support: cedars.hku.hk
- Counselling services and Special Educational Needs (SEN) Support: cedars.hku.hk/cope

Upon Arrival

Come to CEDARS to pick up

- Guide for Newcomers: handy information booklet to facilitate your settling in
- Information on Orientation

What documents should I bring?

We recommend that you carry the following documents with you. To be safe: make photocopies of them.

- Valid passport or travel documents.
- Student Visa (You have to present your student visa label to the immigration officer at the immigration clearance counter upon arrival.)

- Original Letter of Acceptance from The University of Hong Kong.
- Proof of funds available (e.g. bank draft, transfer of funds, credit, scholarship or other) and/or credit cards such as Visa, MasterCard).
- Address and telephone number of where you are going.
- Your medical records, immunisation records and academic records.
- Documents with details of your insurance policy (if any) issued in your home country.
- For those who are married, marriage certificate if your spouse is accompanying you.
- Passport photo for hall registration.
- Proof of your permanent address in your own country (e.g. original bank statements, driving license). The bank statements should be of the past 2 months and in English.

What should I pack?

Clothes & Bedding

- You can expect sunny, bright and cool weather during winter and occasional mist and showers from March to mid-May, so a shower proof jacket is desirable.
- There is no heating system in Hong Kong and some winter days can be quite cold. You may consider bringing a quilt for the cooler days or alternatively buy one in Hong Kong.
- Linen and pillows are not provided in halls. You can get these items easily in the nearby markets of the HKU campus. Some halls will lend you these items for the first few days.

Dictionary

Cantonese is the main language spoken among local students, but students are competent in speaking good English and all classes are conducted in English. However, you may expect some of the general public cannot speak good English. Bring along a good bilingual dictionary if you need one.

Electrical equipment

The electrical equipment you bring should be compatible with Hong Kong's voltage, which is 220 volts, 50Hz. The plug used in Hong Kong has 3 pins in rectangular shape.

Food

- Hong Kong is a cosmopolitan city, and you will be able to find most, if not all, types of food here.

- In case your flight arrives in late night, you may have difficulties in locating a restaurant or catering outlet. It is advisable to pack some light snacks such as biscuits or chocolates in your hand carry luggage.

Mobile phones

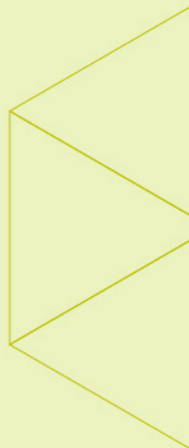
Hong Kong is using the GSM 900 / 1800, WCDMA 900 / 2100 and FDD-LTE 1800 / 2600 (2G, 3G and 4G) networks. There are a wide range of packages offered by different service providers in the market. Alternatively, you can also bring your handset and purchase a local pre-paid SIM card for use in Hong Kong. For information on Wi-Fi service in Hong Kong, please see <www.discoverhongkong.com>.

Sports goods/music instrument

If you wish to participate in student sports teams or any other student clubs, you may wish to bring along your personal equipment or instrument.

Study tools

Computer facilities are available on the campus and at the halls. You may however wish to bring along your own laptop for the use inside your room. Most of the campus areas and all halls have wireless network coverage for registered students. On the other hand, you can connect to the Gigabit Ethernet via LAN port in your room in hall.



Telling the Taxi Driver to Go to Your Hall

If you take a taxi to HKU campus, you may show the Chinese instructions below to the drivers to take you to your Halls to check-in.



Going to Graduate House

From Robinson Road to Conduit Road. Turn right onto University Drive. Follow the direction of the arrows to the drop off point.

To go to the residential block, enter Graduate House through the entrance on Level P1.

司機先生：請你載我到“香港大學”本部校園的研究生堂
請經羅便臣道至干德道入口進入校園。前往位於大學道之落客區下車。
前往宿舍人士請使用位於P1層的入口。

Going to Lady Ho Tung Hall / Starr Hall / Ricci Hall

Option 1

If you are coming to Lady Ho Tung / Starr Hall / Ricci Hall by taxi from Central / Hong Kong MTR station and you do not have lots of luggage, please pass the following message to the taxi driver.

司機先生：請你載我到薄扶林道91號“香港大學”的何東夫人紀念堂宿舍 / 施德堂宿舍 / 利瑪竇宿舍
請沿薄扶林道往香港仔方向行駛，過了香港大學黃克競樓後下一個巴士站，即寶翠園對面的巴士站下車。

Please go along the Pokfulam Road to Aberdeen. Pass the Haking Wong Building of HKU, and stop at the bus stop opposite to the Belcher's.

Get off the taxi and cross the road. You will see the Jockey Club Student Village I.

Option 2

If you have lots of luggages and do not mind giving HKD10-20 more, please pass the following message to the taxi driver.

司機先生：請你載我到薄扶林道91號“香港大學”的何東夫人紀念堂宿舍 / 施德堂宿舍 / 利瑪竇宿舍

請沿薄扶林道往香港仔方向行駛，到浦飛路巴士總站回轉，向寶翠園方向行駛，在寶翠園前的學生宿舍轉入，再轉右，駛入香港大學舍堂一村。（請留意舍堂村入口在薄扶林分區電力站前）。

Please go along the Pokfulam Road to Aberdeen. U-turn at Pokfield Road bus terminal and turn in the direction to the Belcher's. Turn left soon after passing the Pokfulam Electricity Zone Sub-station and into the HKU Halls area. Turn right and into the HKU Jockey Club Student Village I.



cedars

Centre of Development and Resources for Students
The University of Hong Kong
香港大學學生發展及資源中心

Going to Lee Hysan Hall / R.C. Lee Hall / Wei Lun Hall

Please go on Pokfulam Road in the direction to Queen Mary Hospital. At the traffic lights in front of the hospital, turn right down to Sassoon Road and immediately right turn to the access road leading to the student halls.

司機先生：請你載我到沙宣道 6 號“香港大學”的利希慎堂宿舍 / 利銘澤堂宿舍 / 偉倫堂宿舍

請沿薄扶林道往瑪麗醫院方向行駛，至醫院前交通燈處，右轉落沙宣道，隨即於右手面第一個路口轉上學生宿舍。

Going to Morrison Hall / Suen Chi Sun Hall / Lee Shau Kee Hall

Take taxi from Airport Express Station in Central or Shun Tak Center in Sheung Wan: Please go on Pokfulam Road in direction to Queen Mary Hospital. Turn left at the first traffic light following Fulham Garden (located at 84 Pokfulam Road). Make a U turn at the parking meters outside a park. Turn right at the traffic light and keep on left lane in direction to Central. Turn left at the private road beyond the Flora Ho Sports Centre but before Pokfield Road. The halls are in front of the roundabout.

司機先生：請你載我到薄扶林道 109 號“香港大學”的馬禮遜堂宿舍 / 孫志新堂宿舍 / 李兆基堂宿舍

請沿薄扶林道往瑪麗醫院方向行駛，過了富林花園(位於薄扶林道 84 號)第一個燈位左轉入公園小路，在公園外咪標位回轉出小路，在路口燈位轉右向中環方向靠左線行駛，經過何世光夫人體育中心，並於蒲飛路口前左轉入私家路直達宿舍(私家路入口處有一個大黑色匾牌)。

Going to Pokfield Road Residences

Starting from Sai Ying Pun, stay on the left lane when going on Pokfulam Road in direction to Queen Mary Hospital. Make a right turn to Pokfield Road at the traffic lights after Sinopec Gasoline Station (next to Pokfield Road Bus Terminus). Go downslope along Pokfield Road and the Residences are at the first left turn.

司機先生：請你載我到蒲飛路 13 號“香港大學”的蒲飛路學生宿舍

請從西營盤沿薄扶林道往瑪麗醫院方向靠左線行駛，經過中石化油站(蒲飛路巴士總站旁)後的交通燈位轉右入蒲飛路，沿蒲飛路往下走左邊第一個路口直達宿舍。

Going to HKU Residential Colleges (Jockey Club Student Village III)

Please go on Connaught Road West in the direction to Kennedy Town. Continue onto Shing Sai Road. Then turn right onto Sanda Street. Stay on the right lane and turn right onto Belcher's Street at the second sets of traffic lights. Make a left turn at the second intersection to Smithfield Road. Then turn right at the intersection after PCCW Kennedy Town Telephone Exchange. Make a right turn onto Lung Wah Street and the HKU Residential Colleges is on your left in front of the Kwun Lung Lau.

司機先生：請你載我到龍華街 9 號“香港大學”的住宿學院(於堅尼地城觀龍樓前面)

請沿干諾道西向西行到城西道，沿城西道左轉入山市街，靠右行駛，直行到第二個交通燈位右轉入卑路乍街，在第 2 個路口左轉入士美菲路，經過石山街、科士街和蒲飛路路口，在電訊盈科堅尼地城電話機房後的第 1 個路口轉右繼續走士美菲路，然後再右轉入龍華街。

Going to Simon K. Y. Lee Hall

Go on Pokfulam Road via the Western District Police Station in the direction to Aberdeen. Turn right and go up to the flyover when you entered the west gate of the HKU (opposite to Chiu Sheung Secondary School, Hong Kong). Then, stop your taxi at the loading point adjacent to the multi-storey car park of the Union Building.

司機先生：請你載我到“香港大學”本部校園的李國賢堂宿舍

請沿薄扶林道經西區警署前往香港仔方向，至港大西閘入口（潮商中學對面）轉右上天橋，至學生會大樓多層停車場之上落貨處下車。

(P.S. Students are advised to use the lift inside the car park from CP1 to Ground Floor. Turn right when you take off the lift & you will find the entrance of the Hall when you reach the Ground Floor of the Union building.)

(同學可利用多層停車場內的升降機，由CP1乘搭至G層出升降機後入學生會大樓地下，便見宿舍入口)。

Going to St. John's College

Go on Pokfulam Road in the direction to Queen Mary Hospital. Stay on the left side of the road after passing the Pokfield Road bus terminal for another 30 meters, turn left at the car park entrance of the College (will go pass the main entrance of the College on the way; opposite to the Flora Ho Sports Centre). Go straight up and stop at the car park.

司機先生：請你載我到薄扶林道82號“香港大學”的聖約翰學院學生宿舍

請沿薄扶林道往瑪麗醫院方向，過了浦飛路巴士總站，靠左向前行三十米左右，在學院車場路口左轉（沿路經過學院大門，位於何世光夫人體育中心對面），直上車場停下。

Going to Swire Hall

Go on Pokfulam Road via the Western District Police Station in the direction to Aberdeen. Turn left when you enter the west gate of the HKU (opposite to Chiu Sheung Secondary School, Hong Kong). Then, turn right at the first corner and follow left hand side of the road. After you passed through the Knowles Building and K.K. Leung Building, turn left before the flyover and stop your taxi at the car park in front of Swire Building.

司機先生：請你載我到“香港大學”本部校園的太古堂宿舍

請沿西營盤西區警署（七號差館）旁，上薄扶林道往香港仔方向，到了潮商中學對面之港大西邊入口，轉左按票入閘口，隨即轉右靠左手面直上，到鈕魯斯樓再直去，至梁銓鋸樓前的天橋口轉左，在太古樓停車場停下。

(P.S. Students are advised to use the lift inside the Fong Shu Chuen Amenities Centre from GA to L Floor of Swire Hall. Please use the inter-com on the wall opposite to the lift by pressing 10 and then “Enter” button.)

(學生可使用方樹泉文娛中心內的電梯，由地下至太古堂入口，請使用電梯對面之內線電話，按10字再按“Enter”掣)。

Going to University Hall

Go on Pokfulam Road in the direction to Aberdeen. Turn left at the first corner after the second traffic light beyond Queen Mary Hospital. (At this corner, there is a sign showing 142-144, and on the left there is pay-phone booth). Go straight up. Turn right at the security kiosk. University Hall is the light green castle in front of you.

司機先生：請你載我到薄扶林道 144 號“香港大學”的大學堂宿舍
請沿薄扶林道往香港仔方向，過了瑪麗醫院後第二個燈位後第一個路口左轉，（該路口有 142 及 144 號門牌，左邊有一個電話亭）沿路直上，見保安亭右轉，大學堂停車場停下。

Going to University-rented Off-campus Housing - On Hing Building

Go on Des Voeux Road West in the direction to Sai Ying Pun. After passing Ramada Hong Kong Hotel, stop your taxi in front of the 7-11 Convenience Store at the traffic lights at Water Street.

司機先生：請你載我到“德輔道西 326-332 號安慶樓”
請沿德輔道西往西營盤方向行駛，過了香港華美達酒店，到水街交通燈位、7-11 便利店前下車。

Going to University-rented Off-campus Housing - 13 Chi Wo Street

Go on Nathan Road in the direction to Jordan. Turn left to Cheong Lok Street (At this corner, there is a Bank of China (Hong Kong)), and then turn left to Chi Wo Street.

司機先生：請你載我到“佐敦志和街 13 號”
請沿彌敦道往佐敦方向行駛，左轉入長樂街（該路口有中國銀行香港分行），再左轉入志和街。

