

HKU PREPARATORY GUIDE for NON-LOCAL STUDENTS



cedars

Centre of Development and Resources for Students
The University of Hong Kong
香港大學學生發展及資源中心

Preparatory Guide for Non-local Students Table of Contents

- | | |
|--|------|
| 1. Welcome | p. 4 |
| 2. Introducing the Centre of Development and Resources for Students (CEDARS) | p. 5 |
| 3. Planning Your Stay | p. 7 |
| <ul style="list-style-type: none">• Academic and Admission Matters• Cultural Adjustment and Life in Hong Kong• Family Matters• Finances• Housing• Medical Care and Insurance: Keeping Well• Support for Students with Disabilities and/or Special Educational Needs (SEN)• Students Under 18• Visa Matters | |

4. Arriving Hong Kong	p. 38
<ul style="list-style-type: none">• Buddy Mentors• Getting to HKU• HKU Weeks of Welcome (WoW), Orientation and Induction Programme• iMAP	
5. Life at HKU	p. 44
<ul style="list-style-type: none">• Amenities Centres, Chong Yuet Ming Cultural Centre and Global Lounge• Catering: Where to Eat• Language• Learning Spaces• Smoke-free Campus• Student Attire• Student Clubs• Student Sports and Recreation	
6. Appendices	p. 60
<ul style="list-style-type: none">• Dates of Semesters for 2018-2019• Directory• Campus Map• Non-local Students Profile• Pre-departure Checklist	
7. Instructions to Taxi Driver	p. 74
<ul style="list-style-type: none">• Telling the Taxi Driver to Go to Your Student Residence	

Welcome




The University of Hong Kong welcomes non-local students and has much to offer, both academically and culturally. As you are preparing to study at The University of Hong Kong, a historical and premier university in the territory, you may wish to have some ideas about the wide range of services that we provide. This guide is intended to give you some information along with practical tips to your adjustment to the University. We look forward to working with you closely to make your stay at HKU a very fruitful and rewarding experience. Thank you.

A handwritten signature in black ink, which appears to read 'Eugenie Leung'.

Dr. Eugenie Leung
Dean of Student Affairs

March 2018





INTRODUCING THE CENTRE OF DEVELOPMENT AND RESOURCES FOR STUDENTS (CEDARS)

The Centre of Development and Resources for Students (CEDARS) is committed to fostering an intellectually stimulating and culturally diverse campus to enrich students' total learning experience at the University of Hong Kong (HKU). Bridging the boundary between classroom and the world, we provide support services, resources and educational programmes to facilitate students' learning. Cedars are ornamental trees with durably scented wood and evergreen leaves; they signify growth, development and shelter which are the goals of our work for students. At CEDARS, we hope to nurture students with a durable scent of the intellect so that they are forever young and fresh.

CEDARS consists of four sections, Campus Life, Counselling and Person Enrichment, Careers and Placement, and Student Development.

CEDARS – Campus Life

Non-local Student Services – We are your first contact

CEDARS as a whole provides a range of support services to non-local students. The Campus Life section is your first contact. We offer you specific support upon arrival.

Campus Life Support

- We provide information and assistance on non-academic matters.
- We give assistance and guidance on:
 - Visa and immigration formalities
 - Housing
 - Orientation and cultural adjustment



Why talk to us?

- We are experienced in helping students.
- We understand the university system.
- We have knowledge of issues affecting non-local students.
- All discussions are confidential.
- We can refer you to other services, if necessary.

Who are we?

Director of Campus Life:

Sylvia Wong (sylvchan@hku.hk)

Senior Student Advising Officers:

Emily Wong (eypwong@hku.hk)

Wenkie Koo (wenkie@hku.hk)

Accommodation Manager:

Alan Ng (alanhyng@hku.hk)

Catering Manager:

Sam Poon (swhpoon@hku.hk)

Student Advising Officer:

Kathy Wong (kathywcy@hku.hk)

How can you meet us?

You can always drop in at our counter for general enquiries or make an appointment to discuss your concerns and needs with a Student Advising Officer.

CEDARS

3/F, Meng Wah Complex

Tel: (852) 3917 2305

Fax: (852) 2546 0184

Email: cedars@hku.hk

Website: www.cedars.hku.hk



The background is a light blue sky with several white, stylized clouds of various sizes. In the foreground, there are dark blue mountains with white, jagged peaks. A red flag is planted on the highest peak. To the left, a black telescope on a tripod is pointed towards the mountains. The entire scene is framed by a white border. The title "Planning Your Stay" is written in a large, white, textured font in the center of the image.

Planning Your Stay

Academic and Admission Matters



Founded in 1911, HKU is the oldest tertiary institution in Hong Kong. With a population of over 29,000 students, there are over 9,000 overseas students enrolled from about 90 countries in 2017/18. HKU ranked 4th in Asia (1st in Hong Kong) and 26th in the world, according to Asia University Rankings 2018 of Times Higher Education and QS World University Rankings 2018 respectively.

HKU is a culturally diverse campus. It offers full-degree programmes and short-term exchange programmes to non-local students. You can choose to study at HKU as a “visiting student” for a short period of time. Details on admission criteria and procedures can be found at www.aal.hku.hk/admissions.



Important application dates for non-local students

Exchange programme

The deadlines for our partner institutions to nominate their students are as follows:

- March 31 for admission in September of the same year
- September 1 for admission in January of the following year

The deadlines for nominated students to complete the application and send all supporting documents are as follows:

- April 30 for admission in September of the same year
- September 30 for admission in January of the following year

For updated information, please visit www.aal.hku.hk/studyabroad.



Undergraduate programme

For international students completing international curriculum:

- Main round: Mid-September to Mid-November
- Late applications: Mid-November to Late May

For students sitting the National Joint College Entrance Examination (內地高考):

- Multi-faceted Excellence Scheme: Mid-October 2017 to Early December
- Main round: Mid-October to Mid-June

For updated information, please visit

<www.aal.hku.hk/admissions> and <www.hku.hk/mainland>.

Research postgraduate programme

Application deadlines:

Hong Kong PhD Fellowships (HKPF)*

- Initial application to the Research Grants Council: December 1, 2017 noon
- Full application to HKU: December 1, 2017
- Main round: December 1, 2017
- First clearing round: April 30, 2018
- Second clearing round: August 31, 2018

*All HKPF applications will automatically be considered for the award of the University Postgraduate Fellowships (UPF).

Taught postgraduate programme

Taught postgraduate programme opens for application starting from September 2017 onwards, with the deadline varying from programme to programme. Please refer to the Taught Postgraduate website at <www.hku.hk/tpg>.

Visiting programme

Application deadlines are as follows:

- April 30 for admission in September of the same year
- September 30 for admission in January of the following year

For updated information, please visit

<www.aal.hku.hk/studyabroad>.



HKU Summer Institute

A choice of over 50 academic and experiential programmes – some of which are credit bearing.

- Programmes are normally held between mid-June and August
- Applications open from early December to mid-March
- Visit <www.aal.hku.hk/summer> for full details

Student visa

You should proceed with your student visa application after receiving a conditional / confirmed offer of admission. For application procedures, please visit <www.cedars.hku.hk/wow> (visa).

For Mainland exchange students, undergraduate and taught postgraduate students, please contact China Affairs Office at <visaapp@hku.hk> for help in your student visa application.

Halls or Residential Colleges

For exchange and undergraduate students:

- September admission: May to August, 2018
- January admission: October to December, 2018

For postgraduate students:

Application is open throughout the year. Students are strongly recommended to apply as soon as they have received the letter of Offer of Admission.

For details, please refer to “Housing” (see p.21-33).

Cultural Adjustment and Life in Hong Kong



Language

Hong Kong is a cosmopolitan society. Chinese is the major ethnic group. Locals speak the dialect of Cantonese. Most people speak Cantonese and understand English, though fluency of the latter may not be perfect. Putonghua is commonly heard and spoken nowadays. Some locals may have difficulties in communicating with you, particularly if you have strong regional accents. You may also experience some difficulties in understanding them at first. Just be patient. Try to speak slowly. Avoid colloquialisms and jargons if you can. When communication becomes really difficult, remember the magic word “smile”. It works across all cultures.

你好

Hello

¡Hola!

Social Customs and Behaviour

- It is common to call your peer's first name. It is always safe to address the elders and seniors in the social circles with their titles such as Mr. Chan, Dr. Wong, Professor Lee, etc.
- It is advisable to give your Chinese friends plenty of personal space, particularly if you do not know them well. If you are interacting with the locals, avoid the common western gestures like back slapping and nudging as they may find them uncomfortable.
- Do not push ahead of others who are waiting in a queue.
- It is not polite to ask a newly acquainted person about his or her income or marital status.
- Squatting on the street and spitting or speaking loudly in public area are regarded as “uncivilised” acts. Putting your feet on a chair or on a train seat is deemed as “very bad manner”.
- Modesty is highly valued by the Chinese. Display of intense affection, temper or anything “extreme” will very often be frowned upon.
- The concept of “face” (dignity) is very important for the Chinese. Refrain from making criticism and personal remarks on social occasions.





Chinese Festivals

Hong Kong celebrates many traditional Chinese festivals. The most important one is the Chinese New Year, which usually falls in January/February. Classes will be suspended and university offices will be closed.

More information on Chinese festivals can be found at <www.discoverhongkong.com>.

Daily Living in Hong Kong

The University campus is well served by subway (Mass Transit Railway), buses and green mini-buses. Eligible students can apply for a “Student Octopus Card” in October every year. Details can be found at <www.mtr.com.hk>.

Generally Hong Kong is a safe city with many well-lit roads. Public transportation services also operate till midnight throughout the week.

If you wish to learn about the other facets of “HK life” such as transportation, money matters, cultural events, and tourism spots, you can surf related websites such as <www.studyinhongkong.edu.hk> and <www.discoverhongkong.com> before departing for Hong Kong. Essential information is also listed at CEDARS website at <www.cedars.hku.hk/wow>. You are strongly recommended to read the “Guide for Newcomers” at <www.cedars.hku.hk> (Publication) upon arrival.

Suggestions for Your Better Adjustment in Hong Kong

- Examine your expectations
- Listen and observe
- Ask questions and seek clarification
- Keep an open mind on cultural differences
- Keep your sense of humour
- Be prepared for anxiety and frustration
- Get involved in student activities
- Explore the local culture of Hong Kong
- Actively interact with local students and introduce your culture to them
- Learn basic Cantonese (Do consider participating in the "Survival Cantonese" Programme jointly organized by CEDARS and Chinese Language Centre. For details, please refer to "Language" (see p.51-52). For enquiries, please contact <cedars-cope@hku.hk>.)



On-line University Adjustment Tips

FAQ videos on successful university life:
www.cedars.hku.hk/faq

First Year Experience:
www.cedars.hku.hk/fye

Adjustment tips for non-local students:
www.cedars.hku.hk/tips4nonlocal

Consultation Service offered by CEDARS

Professional Counselling Service

Individual counselling service is offered to all HKU students to handle university adjustment, personal and study issues, emotional problems, relationship problems and to improve psychological health.

We have a team of professional Clinical Psychologists and Counsellors. This service is confidential and free-of-charge. To make your first appointment, please call (852) 3917-8388, email <cedars-cope@hku.hk> or come to our Centre at Room 301-323, 3/F, Main Building. You will receive an immediate 15-20 minute screening assessment conducted by our Duty Counsellor between 10 a.m. and 5 p.m. (except the lunch hour: 1 p.m. to 2 p.m.) on Monday to Friday. Afterwards, a full counselling appointment will be scheduled for you within 2 weeks.

If you have a crisis or need urgent counselling, you can contact our office and the Duty Counsellor will advise you.

Office hours:

Mondays to Thursdays 9 a.m. to 5:45 p.m.

Fridays 9 a.m. to 6 p.m.

Saturdays 9 a.m. to 1 p.m.



CEDARS (Counselling and Person Enrichment)
Room 301-323, 3/F, Main Building

Tel: (852) 3917 8388

Fax: (852) 2517 6394

Email: cedars-cope@hku.hk

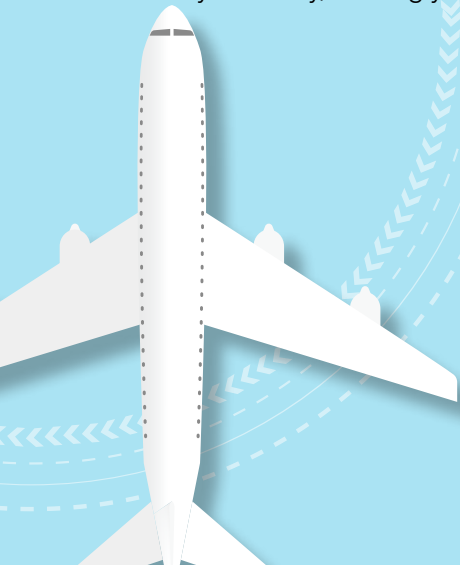
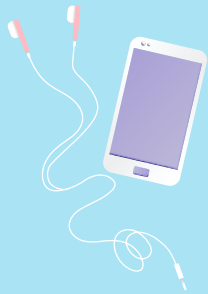
Website: cedars.hku.hk/cope

Family Matters



Should I bring along my own family?

Before making a decision of bringing your family to Hong Kong, it is important to consider the following issues:

- The airfare expenses for your family to and from Hong Kong
 - Additional accommodation expenses as you may need to rent a larger flat
 - Extra cost for food, clothing and other necessities
 - Restricted employment opportunities for your spouse
 - Provision of child care facilities
 - Whether your children will adjust well to schools in Hong Kong
 - English-speaking schools are mostly privately run and expensive
 - The impact on you and your studies if your family is not happy in Hong Kong
 - Whether you will come to Hong Kong first and arrange things for your family, or bring your family to Hong Kong together with you
- 
- 



Finances

Fees and Expenses 2018-2019 (For Reference Only)

The following ESTIMATES are based on the charges for the year of 2017/18 only. Fees and charges are expected to increase on an annual basis.

Major expenditure (in HK dollar)

Items	Undergraduate Students	Postgraduate Students
Academic		
Tuition fees	\$146,000 p.a.* *This is for UGC-funded programmes only. For self-financing courses, the fees vary from programme to programme. * Subject to revision	For students of taught courses, you need to check the tuition fees with Faculty office as fees vary from programme to programme. For research students: \$42,100 p.a.* * Subject to revision
Other University expenses	\$350 Caution money + \$240 Student Union Fees	\$350 caution money
Academic expenses (e.g. books and supplies excluding PC & accessories) Some courses also incur significant expenses relating to overseas field trips and special equipments.	Around \$7,520 - \$36,340 p.a.	Around \$9,626 - \$46,515 p.a.
Housing		
Lodging fees of the University's residential halls & colleges	\$14,000 - \$29,000 p.a. (280 residential days)	\$17,000 - \$63,000 p.a.
Hall miscellaneous charges	\$1,600-\$3,000 p.a. These include hall association entrance and subscription fees, high table dinner fees, key deposits etc, excluding air-conditioning charge which varies with individual lifestyle and seasons (approximately \$200 per month in summer).	\$1,600-\$3,000 p.a.
Compulsory hall meal charges	\$9,000 - \$13,000 p.a. (not all meals are covered)	\$9,000 - \$13,000 p.a. (not all meals are covered)
University-administered non-hall housing	\$14,000 p.a.	\$23,000 - \$46,000 p.a.
Privately rented accommodation	Single room from \$40 per sq.ft. up, excluding utilities	
Other Expenses		
Personal expenses (depending on your lifestyles and if you go grocery shopping on campus)	Around \$4,500 per month up	

You also need to budget for your entertainment, overseas travel, insurance and medical expenses, etc.

The following tables give you some reference figures on common meal and transportation items:

Meal Expenses (on-campus catering outlets)

Items	Average Spending Per Meal / Purchase (HK\$)
Breakfast	15 - 25
Afternoon Tea	15 - 25
Lunch	15 - 40
Dinner	18 - 40
Sandwiches	12 - 30
Bakeries	8 - 20
Salads	15 - 35
Hot Beverages / Coffee	6 - 25
Cold Beverages / Coffee	7 - 27
Snacks	5 - 20

Transportation Cost

Frequent routes	Fare (HK\$)	Means of public transport
Sassoon Road to Main Campus	2	By University shuttle bus
	5 - 11	By bus or mini-bus
Main Campus to Central	5 - 9	By bus or MTR
Main Campus to Causeway Bay	7 - 11	By bus, minibus or MTR
Main Campus to Mongkok	11 - 15	By bus, minibus or MTR





Financial Aid

Like most countries, the HKSAR government or the University does not provide financial aid to non-local students. It is therefore important for you to plan your budget well and ensure that you will have adequate financial resources to cover all of your expenses during your stay in Hong Kong.

Scholarship

Postgraduate scholarships are available for those pursuing for a M.Phil. or Ph.D. degree. Further information is obtainable from the website of Graduate School at <www.gradsch.hku.hk>.

Students applying for undergraduate admissions will be considered for entrance scholarships when they submit admissions applications to HKU. The result will be announced at the same time when students receive an offer of admission. No separate application is required. For updated information, please visit <www.aal.hku.hk/admissions>.

Students may also apply for other scholarships after they are admitted to HKU. For other HKU scholarship opportunities, please visit <www.scholarships.hku.hk>.

Part-time and Summer Job

Under the existing immigration regulations, non-local students in full-time full-degree programmes are allowed to work at the designated operators on the HKU campus for up to 20 hours per week during term time. They can also work full-time during the summer months. For details, please visit <www.cedars.hku.hk/wow> (visa).

While some students can earn extra money from part-time and vacation work, availability of suitable jobs is not guaranteed. It is not advisable to plan your budget expecting to find work for the maximum allowable hours.

Banking Arrangements: Making early provision

If you do not have a bank account in Hong Kong, you will need to transfer money for use on arrival. This can be done, either

- by instructing an overseas bank one or two weeks prior to your departure. Arrange to send money in your name to a bank in Hong Kong (both HSBC and the Bank of East Asia have branches on the HKU campus); or
- by carrying traveller's cheques or bank drafts for deposit into a local account (personal cheques can also be deposited but may take up to three weeks to be cleared).

Majority of banks are open from 9:00 a.m. to 4:30 p.m., Monday to Friday. Most establishments in Hong Kong accept major credit cards such as VISA, MasterCard and American Express, but the University and most campus outlets accept cash or cheque only.

Documents for opening a savings account:

- Passport with student visa
- Student card and letter of admission
- Proof of your permanent address in your own country (e.g. original bank statement in English/Chinese issued in the last three months, latest driving license in English/Chinese)
- Proof of your residential address in Hong Kong (e.g. latest tenancy agreements, address proof from the respective office of halls of residence)
- Introducer or referee letter from home country's bank in English/Chinese (if any)
- Hong Kong Identity Card (if any)

Note:

1. Banks may require additional documents for opening of account or reject applications of persons from certain countries. Please allow more time to process your bank account. Ensure that you have brought along enough cash to live in for the first few months.
2. For students under 18, please refer to p.36.

Bringing money

There are usually significant extra expenses in the first month of your stay, such as rental charges, household items and textbooks. On top of the tuition fees, expenses for the first month can amount to HK\$10,000 or more for a student. It is important to have a realistic idea of the amount of money you will need and plan accordingly.

You are advised to bring enough cash, traveller's cheques, or bank drafts to cover expenses of at least your first month. Do not, however, carry too much cash at any time.

You will be able to locate banks and currency exchange services at the airport as well as on campus.

You can obtain a bank draft or transfer money to a bank account in Hong Kong through your local bank. Keep in mind that it may take some time to cash a bank draft with a large amount of money.

Money transfers should be arranged well before your departure.

There are two banks and automated teller machines (ATM) located on campus:

HSBC branch + ATMs

(Tel: 852-2233 3000)

The Bank of East Asia branch + ATMs

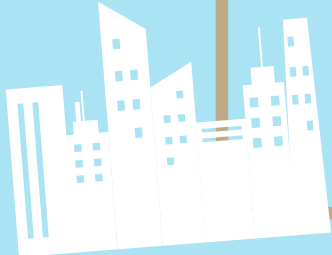
(Tel: 852-3609 1812)

Bank of China branch (ATM only)

Check their locations at <www.maps.hku.hk>.

The official currency of Hong Kong is Hong Kong Dollar (HK\$). You can exchange Hong Kong Dollar with foreign currency or traveller's cheques according to the daily exchange rates at any banks or money exchange shops in Hong Kong.





Housing

1. Housing for full degree undergraduate and exchange students (for full-time students only)

We have different types of housing to suit your needs.

(A) Halls (primarily for undergraduate students)

There are thirteen halls of residence, eleven of which are directly administered by the University, while two are financially and administratively independent of the University. These halls vary considerably in size and character. They are basically undergraduate halls, but they also accept a small number of postgraduate students. Halls assign 30%-33% of their places to non-local students. Competition for hall places is keen.

Hall Culture: Is it for you?

The halls of HKU are committed to the personal and social development of their members. They are part of the education system, rather than a mere provision of accommodation. Hall members are expected to take full advantage of this experience and to participate actively in a wide range of hall activities.

The halls are also known for their strong hall spirit. Members identify very strongly with their halls. Each hall has its own tradition, culture and unique characteristics.

(B) Residential Colleges (for undergraduate and postgraduate students in UGC-funded programmes)

There are also four Residential Colleges (Jockey Club Student Village III – Shun Hing College, Chi Sun College, Lap-Chee College and New College) for 1,800 students.

The Residential Colleges have three distinctive features. First, as they are located in Kennedy Town and next to many residential blocks, students have very close engagement with the community. Students use their knowledge and skills to help build a better community and at the same time, learn and grow in the process.



Second, there is a strong intellectual and academic component. Through activities such as seminars, salons, talks and projects, students together embark on interesting intellectual journeys and explorations. Such activities will also benefit the rest of the University community.

Third, the Residential Colleges have strong representations of local, mainland and overseas students. There is a lot of in-depth cultural exchange. The students may also help Kennedy Town to develop into a multi-cultural community.

Finally, the Residential Colleges also build on the proud traditions of hall, e.g. strong identity, High Table Dinners, etc.

Residential Colleges assign about two-thirds of their places to non-local students.

Facilities in Halls & Residential Colleges

All halls and Residential Colleges have common rooms and recreational facilities. Each floor has its own pantry and is equipped with refrigerators, microwave ovens, hotplates, water boilers and drinking fountains. Communal bathrooms and toilet facilities are provided on each floor. All rooms are air-conditioned and are furnished with beds and mattresses.

Each student is provided with a wardrobe, a writing desk with a lamp, a chair and a bookshelf. Individual network point and a shared telephone line are provided in every room in most of the halls. Coin/smartcard-operated washing and drying machines are provided in every hall as well. All rooms are connected to the HKU Campus Network with data ports for internet access.



Halls & Residential Colleges Charges: Planning your expenses

The following table shows the fees (in HK dollar) for undergraduate students residing in the halls and residential colleges in 2017/2018. Fees are normally adjusted annually.

Halls	Lodging Fees	Compulsory Meal Charges
St. John's College	Single Room \$16,579 (281 residential days)	\$12,456.5
Ricci Hall	Single Room \$13,776 (287 residential days)	\$9,320
University Hall	Double Room / Shared Room \$13,440 (280 residential days)	\$8,800
Other university-administered halls ¹	Double Room / Shared Room \$13,440 (280 residential days)	Not applicable
Residential Colleges	Single Room \$23,000 (280 residential days) Double Room \$17,400 (280 residential days)	Not applicable

¹ Lady Ho Tung Hall, Lee Hysan Hall, Lee Shau Kee Hall, Morrison Hall, R.C. Lee Hall, Simon K.Y. Lee Hall, Starr Hall, Suen Chi Sun Hall, Swire Hall and Wei Lun Hall.

Note:

- In 2017~18, the normal residential period falls between 21 August 2017 and 28 May 2018 (280 residential days).
- If you are a resident of St. John's College, Ricci Hall or University Hall, you **MUST** join the meal plan of your hall. Please contact the office of your hall for the information and coverage of the meal plan. The meal plan covers part of all your meals only.
- If you are a resident living in other halls / residences, you can have meals at catering outlets on campus or near your hall. The cost will be around \$3,000 per month.
- Apart from the lodging fee (and the compulsory meal charges for the 3 halls), you will be required to pay some miscellaneous charges such as students' association membership fees, compulsory high table fees, room and/or smartcard deposits, etc. on a semester basis. The total ranges from HK\$1,000 to HK\$1,500 per semester while some of them may be refundable.
- In addition, costs for laundry and in-room air-conditioning will be borne by residents.
- The office of the hall / residence will give you an updated list of charges after you have been offered a place.
- After moving into the hall / residence in August and January, you will receive the invoices of the hall charges in October and February respectively from Finance and Enterprises Office of the University via your HKU portal account. You will have to pay by cash (in HK Dollar) or by bank transfer to a HKU bank account (HSBC or Bank of East Asia.) They have branches in the Main Campus of HKU.
- If you wish to stay in a hall during the summer vacation (from June to August), you have to contact the office of your hall/residence by April for the application of summer vacation residence. Additional charges will be incurred.

University Halls and Residential Colleges

Main Campus (Pokfulam Road)

Simon K.Y. Lee Hall

- for men and women
- shared rooms

🏠 www.hku.hk/skylee



Swire Hall

- for men and women
- shared rooms

🏠 www.hku.hk/swire

Jockey Club Student Village I

🚩 91 Pokfulam Road

within walking distance to the Main Campus

Lady Ho Tung Hall

- for women only
- shared rooms

🏠 www.hku.hk/hotung



Starr Hall

- for men and women
- shared rooms

🏠 www.hku.hk/starr



Jockey Club Student Village II

🚩 109 Pokfulam Road

next to Flora Ho Sports Centre
within walking distance to the Main Campus

Lee Shau Kee Hall

- for men and women
- shared rooms

🏠 www.hku.hk/lshkhall

Morrison Hall

- 150 for undergraduates (men only)
- 150 for postgraduates (men and women)
- shared rooms

🏠 www.hku.hk/morrison

Suen Chi Sun Hall

- for men and women
- shared rooms

🏠 www.hku.hk/scsweb

Sassoon Road

Lee Hysan Hall

- for men and women
- shared rooms

🏠 lhh.hku.hk

R.C. Lee Hall

- for men and women
- shared rooms

🏠 www.hku.hk/rcldhall

Wei Lun Hall

- for men and women
- shared rooms

🏠 www.hku.hk/weilun

🚩 6 Sassoon Road

next to the Sassoon Road campus
within a short bus ride from the Main Campus



Pokfulam Road

University Hall

- for men only
- shared rooms

🚩 144 Pokfulam Road

within a short bus ride from the Main Campus
with dining room; with compulsory meal plan for residents

🏠 www.hku.hk/uhall



Ricci Hall

- for men only
- run by Jesuit Fathers
- single rooms

🚩 93 Pokfulam Road

within walking distance to the Main Campus
with dining room; with compulsory meal plan for residents

🏠 www.hku.hk/ricci



St. John's College

- for men and women
- an Anglican Foundation College
- single rooms

🚩 82 Pokfulam Road

opposite to the Flora Ho Sports Centre
with dining room; with compulsory meal plan for residents

🏠 www.hku.hk/stjohns



Jockey Club Student Village III



Residential Colleges

Shun Hing College

🏠 www.shunhingcollege.hku.hk

Chi Sun College

🏠 www.chisuncollege.hku.hk

Lap-Chee College

🏠 www.lapcheecollege.hku.hk

New College

🏠 www.newcollege.hku.hk

- for men and women
- shared rooms mainly; some single rooms for undergraduate students

🚩 9 Lung Wah Street, Kennedy Town

within a short MTR ride from the Main Campus

(C) Other Student Residences

When all vacancies of halls or Residential Colleges for non-local undergraduate students are filled, students will be assigned a place in a “non-hall” student housing like Pokfield Road Residences (PRR). (see *Accommodation for postgraduate students below*).

The lodging fee for undergraduate students in PRR is same as that of other university-administered halls or Residential Colleges. In addition, residents will be charged for air-conditioning fees and they have to pay smartcard deposits.

Application Procedures:

CEDARS coordinates and places newly admitted non-local undergraduate students into halls, colleges and non-hall student housing. As soon as you are admitted to the University, you may submit an application. The online application form is available under “Housing for non-local students” at <www.cedars.hku.hk>. You will normally be notified of your application result from late July (for students admitted for the first semester) or from early December (for students admitted for the second semester).

Outside Accommodation - Bursary Scheme

CEDARS has introduced "Bursary Scheme for Outside Accommodation" since the academic year of 2009-10 to non-local undergraduate students in order to enrich their residential experience. The Scheme serves good educational value for non-local students if they live in the community. Students can understand more and be better integrated into the local community. If a few students team up to rent an apartment, they can also learn to take care of and collaborate with one another. For details, please contact Accommodation Service at <accommodation@cedars.hku.hk>.

2. Housing for postgraduate students

The University has a few postgraduate residences that are independently managed. You should contact these residences directly for applications and enquiries.

(A) Graduate House (UGC-funded programmes only)

Located on the Main Campus, Graduate House provides air-conditioned accommodation for 200 postgraduate students. There are 190 single rooms with a shared bathroom between two adjacent rooms and 10 double rooms with private bathrooms. Approximately 80% of residents are from overseas.



Monthly charges (in Year 2017-18):

Single room: HK\$3,315

Double room: HK\$6,073 (for married couples without children)

(Occupants are required to pay the monthly electricity charges of their own bedrooms)

Security deposit: one month's rent

Key deposit: HK\$100

For enquiries about vacancies, please contact:

Mr. Dick Chow
Manager
Graduate House
University Drive
The University of Hong Kong
Tel: (852) 2249 1800
Fax: (852) 2546 1861
Email: gradhse@hku.hk
Website: www.hku.hk/gradhse

(B) Wong Chik Ting Hall, St. John's College (All postgraduates)

It takes about 15-minute walk to the Main Campus and is well served by bus routes. Priority is given to research students. Residency for one complete year is preferred. The monthly charge for a room ranges from HK\$5,700 to HK\$6,300 (in Year 2017-18) (excluding utilities). All rooms are fully furnished and air-conditioned, with self-contained bathrooms.

For enquiries about vacancies, please contact:

Ms Tiffany Lam
College Admission and
Registration Manager
St. John's College
82 Pokfulam Road
Hong Kong
Tel: (852) 2817 7102
Email: stjohns@hku.hk
Website: www.hku.hk/stjohns

(C) Pokfield Road Residences (UGC-funded programmes only)

Pokfield Road Residences can accommodate up to 290 students in four types of flats: single flats, 2-bedroom flats, double/triple-shared flats and family flats. Priority is given to newly-arrived non-local research students. (A small number of vacancies will also be set aside to meet the demand from non-local undergraduate students.) Residents can stay from one month up to twelve months, with possibility of extension of stay. The monthly lodging fee ranges from HK\$2,370 to HK\$4,740 (in Year 2017-18).

The Residence is within walking distance to the Main Campus (about 20 minutes) and Flora Ho Sports Centre (about 10 minutes).

Facilities:

All flats come with en-suite bathrooms, domestic washing machines and are fully furnished with beds, wardrobes, study desks, chairs and telephone connection. Each flat also contains a small kitchen with a sink, cupboards, a gas-stove and a small refrigerator for the preparation of light meals.

While lodging fee includes utility cost, air-conditioning is payable and activated by a smartcard device. Residents are responsible for cleaning their own flats, the communal bathroom and kitchen facilities.

For enquiries, please contact:

General Office
Room 1B, Block D, Pokfield Road Residences
13-21 Pokfield Road, Hong Kong
Tel: (852) 2816 2845
Fax: (852) 2816 2955
Email: pokfield@hku.hk
Website: www.hku.hk/pflac



(D) Ching Lin Terrace Residence (All programmes)

The nine-storey flat-type residence can house 126 students. It features mostly single rooms and 21 double-bed rooms in some selected flats for postgraduate students bringing their spouses.



The Residence is located in No. 10 Ching Lin Terrace in a quiet residential area. The area consists of a small number of residential buildings and a Chinese Lo Pan Temple (Grade I Historic Building).

Residence facilities:

- Living room with TV cabinet, sofa, dining table with chairs
- Pantry with electrical induction hotplate, refrigerator, microwave oven
- IP phone, LED TV, wireless internet connection
- Bathrooms with showers
- Bi-weekly cleaning of common areas (except bedrooms)
- 24-hour security service
- Live-in Honorary Resident Tutors
- Other facilities include a multi-purpose hall, reading room and laundry facilities on the ground floor, and a covered landscape area on the mezzanine floor.

For enquiries, please contact:

General Office
Ching Lin Terrace Residence
10 Ching Lin Terrace
Kennedy Town, Hong Kong
Tel: (852) 3917 0133
Fax: (852) 3917 0170
Email: chinglin@hku.hk
Website: www.hku.hk/pflac

(E) Morrison Hall (UGC-funded programmes only)

Founded in 1913, Morrison Hall is one of the oldest halls in the University. The Hall was closed down in 1968. Yet, with the efforts of the "Morrisonians", a campaign for the rebuilding of Morrison Hall was initiated in late 1990s. The new building is located near the Flora Ho Sports Centre. All rooms are double rooms fully furnished with air conditioning and access to the campus network. There is a common bathroom and a pantry on each floor. It provides 150 residential places for both male and female postgraduate students. Priority will be given to newly arrived research postgraduates. It also consists of an undergraduate residence which accommodates 150 male students. All Morrisonians are expected to interact with each other through formal as well as informal hall activities. The monthly lodging fee for each postgraduate student is around HK\$1,800, subject to annual review.

For enquiries, please contact:

Ms Christina Lo
Manager
109 Pokfulam Road
Hong Kong
Tel: (852) 3604 2014
Fax: (852) 2855 7192
Email: jockeyv2@hku.hk
Website: www.hku.hk/morrison



(F) Residential Colleges (Shun Hing College, Chi Sun College, Lap-Chee College and New College) (UGC-funded programmes only)

The areas of a single room and a double room are about 8 and 15 sq.m respectively. All rooms are furnished with beds, wardrobes, writing desks with lamps, chairs and bookshelves. Also, rooms are connected to the HKU Campus Network with data ports for internet access.

Laundry and air-conditioning services are operated by a 'pre-paid smartcard' device. Each floor has a communal pantry equipped with hot and cold drinking water supply, hot plates, a microwave oven, a refrigerator and a television. There are communal washrooms and shower stalls on each floor as well.

There is a five-storey podium housing multi-purpose common rooms for various social and academic-related activities.

The target proportion of undergraduates to postgraduates is 1:1. The monthly lodging fee for each postgraduate student is around HK\$2,850 (double room) and HK\$3,700 (single room), subject to annual review.

For enquiries, please contact:

General Office
Jockey Club Student Village III
9 Lung Wah Street, Kennedy
Town, Hong Kong
Tel: (852) 3917 1419
Fax: (852) 2872 6635
Email: jockeyv3@hku.hk
Website: www.jockeyv3.hku.hk



(G) Robert Black College (for short stay only)

Robert Black College provides accommodation primarily for overseas visiting scholars. There are a few vacancies for students.

Applicants can choose from a variety of accommodation, including single rooms, twin rooms, suites and apartments. All bedrooms have their own bathrooms, and are air-conditioned and furnished with a refrigerator, a television and a telephone, etc. There is also access to the University's computer network in every room. Computers, fax machines and other facilities are also provided in the communal areas for residents' use.

For enquiries, please contact:

Ms Catherine Lok
Manager
Tel: (852) 2549 3719
Email: rblack@hkusua.hku.hk
Website: www.hku.hk/rblack

(H) Off-campus University Rented Housing **(All postgraduates)**

The University has rented a small number of flats in Sai Ying Pun (西營盤) for those students who are interested in living in off-campus housing owned by private landlords. These off-campus flats are well served with facilities such as shops, banks and restaurants. Priority will be given to newly admitted non-local postgraduate students. Monthly lodging fee is from HK\$4,800 up (in Year 2017-18), inclusive of utilities and wireless internet connection.



For enquiries, please contact:

Mr. Alan Ng
Accommodation Manager
Tel: (852) 2859 2305
Email: accommodation@cedars.hku.hk

3. Housing for married students and dependants

The University does not have any accommodation facilities specifically provided for married students and their dependants. However, they may apply for the rooms run by the Robert Black College (monthly rental ranges from HK\$7,000 to HK\$20,000) for temporary stay. In the long run, they need to rent a private flat outside the campus. Graduate House and Pokfield Road Residences also have limited residential places for married couples without children.

4. Temporary housing for students with special circumstances

For students who have special needs and would like to apply for student housing for a temporary period, you are welcome to contact CEDARS for applications. Our housing team will be pleased to assess and make recommendations according to your needs and the availability of vacancies in our residences.

Enquiry: accommodation@cedars.hku.hk

Students with disabilities or special educational needs may refer to "Support for Students with Disabilities and/or Special Educational Needs (SEN)" (see p.35) for the support available.



5. Off-campus privately rented housing: an option for all

Privately rented housing is another option for you. Private accommodation is relatively more expensive than living in halls. Most landlords look for long-term tenancy of at least a year. If you wish to look for privately rented accommodation, you are strongly advised to arrive earlier, so that you will have ample time for property inspection and rental negotiation. The monthly rental starts from HK\$4,000 up for a small single room and HK\$10,000 or more for a flat. A set of guidelines on tenancy matters can be found under "Housing" section at <www.cedars.hku.hk>.

Hotels and Hostels in Hong Kong

There are a number of hotels and hostels in Hong Kong, in which students can stay either short-term or long-term. Please visit the CEDARS website and go to "Housing" for information.



Guest Rooms on Campus

A few guest rooms are available in some halls for students to stay temporarily. For those who need a guest room, they should contact the following hall offices directly for reservation and information:

Hall	Email Address	Telephone No.
Lee Hysan Hall	lhahall@hku.hk	(852) 2986 5110
R. C. Lee Hall	rchall@hku.hk	(852) 2986 5250
Simon K.Y. Lee Hall	skyhall@hku.hk	(852) 3917 0300
St. John's College	stjohns@hku.hk	(852) 2974 3500
Starr Hall	starr@hku.hk	(852) 3156 7575
Swire Hall	swwarden@hku.hk	(852) 2105 6600
Wei Lun Hall	weilun@hku.hk	(852) 2986 5300

Medical Care and Insurance: Keeping Well



Eligibility

The University Health Service (UHS) on campus provides quality primary health care service to eligible users. Please check with your department for matters concerning your eligibility for University Health Service.

Primary Health Care on Campus

Primary care service at the UHS is provided by a team of highly qualified and experienced doctors from various backgrounds. General medical consultations are generally free of charge. Special consultation, certain medications, preventive services and other items are charged at cost. A notional charge is also levied for dental treatment and physiotherapy treatment at the University clinic.

Specialist Care and Hospitalization

When specialist care and hospitalization are required, you can consider using the services provided at public clinics and general wards of government hospitals. The charge for those holding a Hong Kong Identity Card (HKID card) is subsidized. Non-local students without an HKID card are required to pay full fees for services and hospitalization in government hospitals.

Please note that many insurance policies are strictly on a reimbursement basis. International students, even with insurance coverage, may have to settle the medical bill first before you can claim reimbursement. It is important for you to check carefully with your insurance company on the extent of coverage and claim procedures, and set aside a sum of money for contingencies.

Students who are going to spend more than 180 days in Hong Kong may be eligible to apply for an HKID card. As it takes time to obtain the HKID card, you are strongly advised to get your own medical insurance to cover your first month of stay. Visiting students staying at the University for less than 6 months are strongly recommended to purchase private medical and hospital insurance to cover the whole period of your stay in Hong Kong. If you plan to travel around Asia, you are advised to purchase medical insurance that cover all the countries that you plan to visit as well.

For details of the fees charged by government hospitals, please visit <www.ha.org.hk> (Services Guides ➔ Fees and Charges).

Support for Students with Disabilities and / or Special Educational Needs (SEN)



The University welcomes students with disabilities / special educational needs (SEN). CEDARS SEN Support is the one-stop service unit for students with physical and sensory disabilities, learning and developmental disabilities, mental illnesses, chronic medical illnesses, or multiple disabilities. If you have a disability and/or wish to receive additional support due to your special needs, please:

- register with CEDARS SEN Support as early as possible or even before you come to Hong Kong. You may download a registration form from <www.cedars.hku.hk/cope/sen-register-exchange> once you have received the admission / exchange offer;
- send us your relevant documents to support your requests, such as assessment reports and documentary proof of previous special support;
- contact CEDARS SEN Support at <cedars-SEN@hku.hk> or (852) 3917 8388 upon your arrival in Hong Kong.

We provide comprehensive service and support. Examples include:

- campus orienteering
- information on campus facilities
- special classroom and examination arrangements
- on-loan learning aids or equipment
- volunteer / buddy support
- counselling service and more...

For more details about our services, please visit CEDARS SEN Support at <www.cedars.hku.hk/CoPE/SEN>.

Our staff will work closely with you and assist you in achieving a rewarding and successful university life.



Students Under 18

You may still be under the age of 18 at the time of admission to HKU. In this case, your parent/guardian is required to sign a consent form, without which the University may have difficulty in arranging some of the teaching and learning activities, and accommodation for you.

You will be generally treated as an adult and are expected to lead your academic and social lives in HKU as other students do. The University will correspond directly with you, but not your parents/guardians, on things related to you such as course enrollment, payment status of fees, academic status, results and grades, etc. Your parent/guardian will only be contacted in emergency or other situations where potential risks are involved.

Things to note:

1. Student visa application

Your parent needs to nominate a local Hong Kong resident to be your guardian when applying for a student visa. Details of the guardian and nomination form should be attached to your visa application set. Please consult the office of your student visa sponsor (see p.37) if you have further enquiries.

2. Housing

If you are in need of student housing and are successful in your application, you will only be housed in University student residences such as Halls, Non-halls and the Residential Colleges.

3. Banking arrangement

Students under 18 must be accompanied in person by their parent(s) or legal guardian to open a bank account at one of the local banks. The University is not able to act as your guardian in this context.

4. Hong Kong Identity Card

If your parents have nominated a relative to be your local guardian to the Hong Kong Immigration Department, you should be accompanied by that local guardian when you submit your Hong Kong Identity Card application at the Hong Kong Immigration Department.

If your parents have nominated "The University of Hong Kong" to be your local guardian, you can just submit your application to the Hong Kong Immigration Department on your own. You will be asked to fill in a declaration form there.



Visa Matters

Who should apply for a student visa?

Generally speaking, if you wish to study in Hong Kong and you do not have right of abode or right to land in Hong Kong, you need to apply for a HKSAR student visa.

When to apply ?

As soon as you have received the admission letter.

Visa sponsor office

For all international students (except summer programme participants) and Mainland research students, please contact Centre of Development and Resources for Students (CEDARS).

Website: www.cedars.hku.hk/wow (Visa)

Email: cedars@hku.hk

For exchange students, undergraduates and taught postgraduates from the Mainland, please contact China Affairs Office (CAO).

Website: www.aal.hku.hk/cao

Email: visaapp@hku.hk

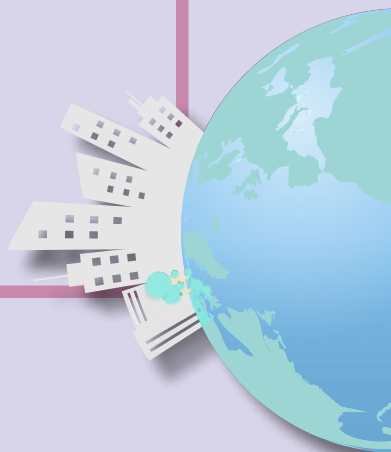
Information on visa application procedure can be updated anytime without prior notice.





Arriving Hong Kong

Buddy Mentors



Planning Your Arrival

Buddy mentors will be assigned to incoming exchange and international students. The buddy mentors can provide linguistic support, cultural guidance and information about life at HKU. The buddy mentors will contact you before the start of the semester and you can consult them for your pre-arrival planning.

Enquiries: exchange@hku.hk



Getting to HKU



From Hong Kong International Airport to HKU

Hong Kong International Airport is situated in Chap Lap Kok on Lantau Island. (fees are for reference only)

Option 1 *By MTR & By Taxi*

Take Airport Express train from HK International Airport to Hong Kong Station, Central (train fare is about HK\$120 and the train ride takes 25 minutes).

Then take a taxi from Central to your hall (taxi fare: HK\$60 to \$80 + luggage fee; 20-minute ride to HKU halls).

Although there are green minibuses from Central to the campus, this is not recommended as they do not allow luggage.

Option 2 *By MTR*

If you would like to go to the University Main Campus, take Airport Express train from Hong Kong International Airport to Hong Kong Station, interchange for HKU Station on Island Line. Exit A1/A2 will lead you to Main Campus while Exit C1 will lead you to Centennial Campus.

Option 3 *By Bus & By Taxi*

Take bus No. A11 from HK International Airport to Central (bus fare is HK\$40, 1-hour bus ride).

Then take a taxi in Central to your hall (taxi fare: HK\$60 to \$80 + luggage fee; 20-minute ride to HKU halls).

Option 4 *By Taxi*

If your budget permits, simply take a taxi from HK International Airport to the hall directly, the cost is about HK\$350 and the travelling time is approximately 45 minutes.

Option 5 *By Bus*

If you are given a place in University Hall or residential halls on Sassoon Road, you can take bus No. A10 at HK International Airport. It will take you directly from the Airport to the Pokfulam district. The fare is HK\$48.

From Hung Hom Railway Station to HKU

You can simply take a taxi at a cross harbour taxi stand from Hung Hom Station to residential halls or hotels. The travelling time from Hung Hom to HKU Main Campus is about 40 minutes and the taxi fare is around HK\$150 excluding luggage fee. As an alternative, if you have lightweight luggage only, you can take bus No. 103 to HKU Main Campus and residential halls along this route (except for University Hall and residential halls on Sassoon Road).

從香港國際機場至香港大學

途徑有五：

- 一. 乘搭機場快線至香港站，然後轉乘的士(即出租車)至香港大學。機場快線列車費用為大概港幣120元，的士費用約港幣60至80元。
- 二. 乘搭機場快線至香港站，然後轉乘港島綫至香港大學站。香港大學站 A1或A2出口可到達本部校園，C1出口可到達百周年校園。
- 三. 若你只是攜帶輕便行李，你可選擇在機場乘搭機場巴士(即公共汽車) A11號至中環區，然後轉乘的士至香港大學。巴士費用為港幣40元，的士費用約港幣60至80元。
- 四. 你可在機場直接乘搭的士至香港大學，車費約港幣350元。
- 五. 若你住在大學堂宿舍或沙宣道學生宿舍，你可在機場乘搭機場巴士A10號至薄扶林區，巴士費用為港幣48元。

從港鐵紅磡站至香港大學



在紅磡站下車後，可乘搭過海的士直接到達大學宿舍或旅館。從紅磡到香港大學本部校園的路程約40分鐘而車費約港幣150元(另計算行李費)。若你只是攜帶輕便行李，你可選擇乘搭103號隧道巴士直達香港大學本部校園及沿途宿舍(大學堂宿舍及沙宣道宿舍除外)。

(以上費用只供參考)



HKU Weeks of Welcome (Wow), Orientation and Induction Programme



A series of orientation and induction programmes will be offered to the newly arrived non-local students at the beginning of the semester. These activities are a mixture of fun, fact finding, visits and tours. They aim to help the students settle in, induct into the local way, and know more about the new environment and people.

In addition to the orientation and induction programmes, CEDARS also organizes the Inauguration Ceremony and High Table Dinner/Luncheon for new students.

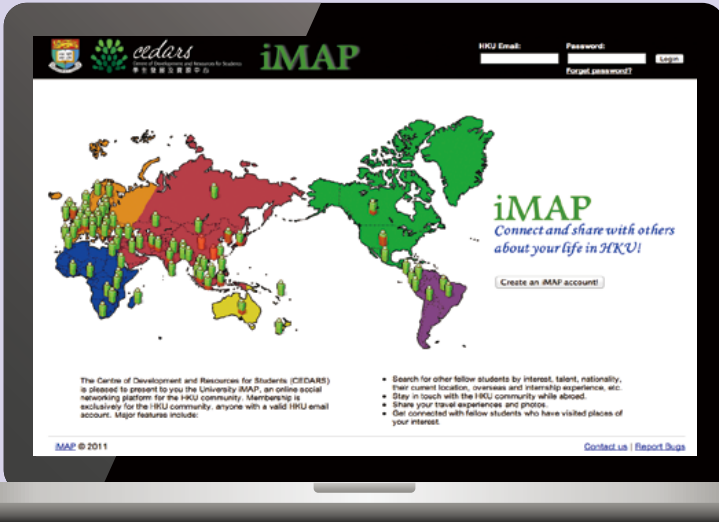
All these activities are designed to help them integrate into the University and to cultivate a sense of identity as a member of HKU.

To facilitate adjustment and adaptation to life in HKU, new students are strongly encouraged to participate in other orientation activities organized by halls, Residential Colleges, etc., which will normally take place in late August. Find out more details from the housing managers or Hall Associations in early August.

Visit the website for non-local students at www.cedars.hku.hk/wow.



iMAP



You will be invited to join our iMAP, an online social networking platform. Membership is exclusive for the HKU community. Members can search for private accommodation near HKU, look for roommates and other fellow students by interest, talent, nationality, their current location and overseas experience, etc. More information will be given to you via email nearer the time. Website: www.cedars.hku.hk/imap

A vibrant, stylized illustration with a teal background. At the top, several white, fluffy clouds are scattered across the sky. A large, white rectangular frame is centered on the page. Inside the frame, the words "Life at HKU" are written in a large, white, bold, sans-serif font. Below the text, a white line-art illustration of the HKU Main Building is shown. The building's facade is partially obscured by the large letters "HKU" which are also in white. In the foreground, four stylized human figures are depicted on a green grassy field. From left to right: a man in a blue long-sleeved shirt and white pants with his arms raised; a woman in a blue and white striped shirt and white pants with her arms raised; a woman in a light blue shirt and white shorts with her arms raised; and a man in a light blue shirt and dark blue shorts with his arms raised. To the left of the figures are several pink tulips, and to the right are large pink flowers. The overall style is clean, modern, and celebratory.

Life at HKU



HKU



Amenities Centres, Chong Yuet Ming Cultural Centre and Global Lounge



All HKU students can enjoy facilities provided by the three amenities centres (Chong Yuet Ming Amenities Centre, Fong Shu Chuen Amenities Centre and Pokfulam Amenities Centre) and Chong Yuet Ming Cultural Centre (CYMCC).

Amenities Facilities include:

- Assembly Hall
- Baby care room
- Banner sites
- Counter space
- Games Room
- Laundry and dryer facilities
- Meeting rooms
- Multi-purpose rooms
- Music rooms
- Open-space for group bookings
- Party cum Meeting room
- Photocopiers
- Prayer room
- Restaurants
- Shower rooms
- Student society rooms
- Supermarket
- Vending machines

CYMCC Facilities include:

- Busking Area
- Exhibition Area
- Room 302 (served as multi-function room)
- Studio 303
- Yuet Ming Auditorium

For booking of CYMCC facilities:

Tel: (852) 3917 1281; or

Drop-in to the general office: Room 401, 4/F, Chong Yuet Ming Cultural Centre

PARKnSHOP

PARKnSHOP, a mini supermarket, is available on 2/F, Chong Yuet Ming Amenities Centre, Main Campus.



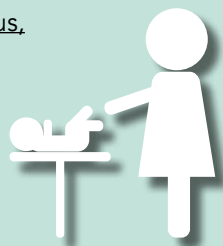


Baby Care Room

Baby Care Room on Main Campus, Centennial Campus, and Medical Campus

Facilities include:

- a washing basin
- a diaper-changing table
- a sofa
- a small table
- electric sockets for electrical milk pumps, and
- a mirror



Main Campus: Room 106, Chong Yuet Ming Amenities Centre. Users may contact the Centre Office:

Opening hours: 9:00 a.m. – 10:00 p.m. daily

Address: Room 201, 2/F, Chong Yuet Ming Amenities Centre

Tel: (852) 2859 8006

Email: cymac@hku.hk

Centennial Campus: Room 5.27, The Jockey Club Tower. Users may get the key from the Facilities Management Office:

Opening hours: 9:00 a.m. – 5:00 p.m., Monday to Friday, except public holidays

Address: Room LG65, LG/F, Centennial Campus

Tel: (852) 3917 8123

Medical Campus: Room AG09, Ground Floor, William M.W. Mong Block, Li Ka Shing Faculty of Medicine Building. Users may get the key from the Facilities Management counter:

Opening hours: 9:00 a.m. – 5:00 p.m., Monday to Friday, except public holidays

Address: Ground Floor, William M.W. Mong Block, Li Ka Shing Faculty of Medicine Building

Tel: (852) 3917 9300

Chapel

Both the St. John's College (an Anglican establishment) and Ricci Hall (run by the Jesuit priests) house a chapel outside Main Campus.

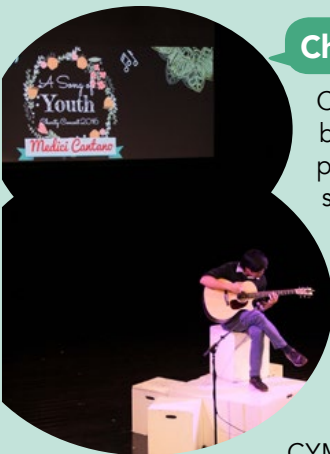


Chong Yuet Ming Cultural Centre (CYMCC)

Chong Yuet Ming Cultural Centre (CYMCC), managed by CEDARS, was established in 2016. It aims at promoting arts and cultural activities to cultivate students' artistic and cultural vision, and to enrich their campus life. CYMCC houses Yuet Ming Auditorium, Studio 303 and an exhibition gallery on 3/F to 5/F of Chong Yuet Ming Building in the Main Campus. Students can enjoy a wide variety of shows and performance such as screenings, drama, and concerts.

CYMCC offers a series of student-based programmes such as Theatre Technicians programme to provide students with practical training in theatrical production.

For more information and upcoming events, please visit our website at www.cedars.hku.hk/campuslife/cymcc or follow our Facebook page: www.facebook.com/CYMCCHKU/.



Global Lounge

Global Lounge serves as a platform for cultural diversity that the University proudly embodies following its continued growth in international student population. Through providing a venue for all types of interactions, informal gatherings, and multi-cultural and international activities such as cultural nights, exhibitions, movie nights, and concerts to take place, Global Lounge offers a unique experience to HKU students and has established itself as a hub of students' social and cultural life at HKU.

Global Lounge

Address: G/F, Fong Shu Chuen Amenities Centre

Tel: (852) 2219 4549

Email: globallounge@hku.hk

Website: www.hku.hk/globallounge

Opening Hours:

Monday – Friday 8:30 a.m. – 9:00 p.m.

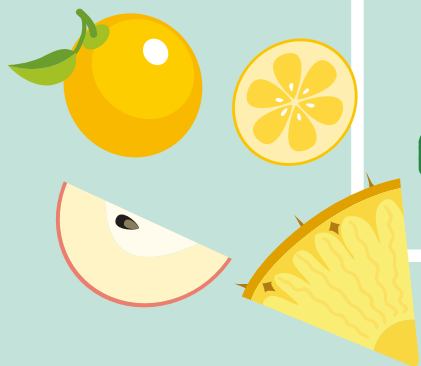
Saturday 8:30 a.m. – 6:00 p.m.

Closed on Sundays, University and Public Holidays

Facilities/programmes include:

1. a café
2. a library with international reading materials
3. an outdoor patio area
4. open seating spaces with comfortable sofas and lounge chairs
5. consultation and information sessions on study abroad opportunities
6. cultural activities and student sharings





Catering: Where to eat

Catering Outlets on Campus

You can easily access to restaurants, café and kiosks located all over Main Campus, Centennial Campus, Sassoon Road Campus, Student Villages and Residential Halls along Pokfulam Road and Sassoon Road. There are also Halal food and vegetarian outlets in the Main Campus. Details of the catering facilities, services offered and menus can be viewed at www.cedars.hku.hk/catering.

You can also stay tuned to updates on campus catering service via the "Food@HKU" app, available in Android and iOS platform.

Off Campus

If you do not mind spending a bit more, you can visit restaurants serving different kinds of cuisines located within walking distance from the Main Campus along Bonham Road, downtown Sai Ying Pun, Kennedy Town and a nearby shopping arcade. You may also explore different international delicacies around the SOHO district (Central), adjacent to the famous Lan Kwai Fong where you can hang out, have drinks and enjoy chit-chat with your friends and fellows. A number of restaurants in town also offer Halal food, Kosher food and vegan options.

Pizza and Burger

5 - 10 minutes walk from East Gate/ MTR HKU Station Exit B2

Bonham Road, High Street, downtown Shek Tong Tsui or call-to-deliver

S.E. Asian Cuisine

5 - 10 minutes walk from Main Campus/ MTR HKU Station Exit B2 or C2

The Westwood Shopping Arcade, Western Street, High Street, Sai Ying Pun

Western Cuisine

5 - 10 minutes walk from East Gate/ MTR Sai Ying Pun Station Exit C

Along Bonham Road, High Street

Chinese Restaurant and Dim Sum

5 - 10 minutes walk from Main Campus/ MTR HKU Station Exit B2 or C2

The Westwood Shopping Arcade, downtown Shek Tong Tsui

Cha Chaan Teng (Local Eateries)

All within 10 minutes walk from East Gate / MTR HKU Station Exit B2

Along Bonham Road, Third Street, Water Street, downtown Shek Tong Tsui

Japanese Cuisine

10 minutes walk from East Gate / MTR HKU Station Exit B2

Bonham Road, The Westwood Shopping Arcade, Downtown Shek Tong Tsui

Pubs, International Cuisine

5 - 15 minutes ride on MTR, green minibus, bus or taxi from Main Campus

SOHO District (Central), Lan Kwai Fong (Central), High Street, Sai Ying Pun and downtown Kennedy Town (close to MTR)

Kosher Food

1. The Jewish Community Centre, Hong Kong

One Robinson Place, 70 Robinson Road, Mid-Levels
www.jcc.org.hk/

10 minutes bus ride towards Robinson Road from MTR HKU Station Exit C1/ East Gate

2. Mul Hayam - Glatt Kosher Restaurant

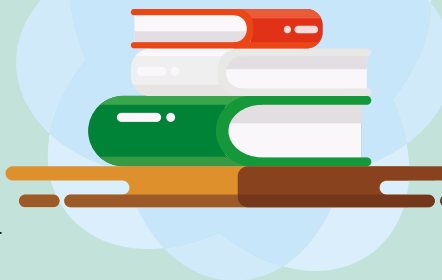
Unit 105, 1/F, Wing On Plaza, 62 Mody Road, Tsim Sha Tsui East (right next to Shangri-la Hotel Kowloon)
www.kehilat-zion.org/restaurant.php

10 minutes walk from MTR Tsim Sha Tsui East Station

Language

CIAO!

In HKU, the official medium of instruction is English. If you need English language support particularly in academic writing, please approach the Center of Applied English Studies (CAES) for assistance. For details, please visit caes.hku.hk.



Chinese courses

Undergraduate students and exchange students can enroll in some credit-bearing Chinese courses run by the School of Chinese. The School runs Cantonese courses and Chinese Language Courses for foreign students. Research postgraduate students can also sign up for the non-credit bearing Cantonese classes offered by the Graduate School.

Language support

Individual Peer Tutoring on Language (English and Cantonese)

To help newcomers better adjust to the learning and social environment at HKU and facilitate greater integration of local and non-local students, CEDARS - Counselling and Person Enrichment Section (CoPE) and two language centres have jointly organized "Peer Language Tutoring Programme" (both in English & Cantonese).

Survival Cantonese

The "Survival Cantonese" programme is specially designed for newly arrived non-local students. It aims to provide you an opportunity to practice some essential day-to-day Cantonese phrases with our native Cantonese student tutors so that you can better adjust to the life in Hong Kong. These one-to-one survival Cantonese conversational practice sessions are usually offered between the 4th week and the 12th week each semester.

Peer English Tutoring

"One-to-one" and "group chat" English conversational practice sessions are offered to HKU students who want to brush up their oral English. All English peer tutors are native or near native English speakers. This collaboration between CEDARS-CoPE and Centre for Applied English Studies (CAES) has proven to be an effective and popular initiative that benefits both tutors and tutees.

You can register as a tutee to learn from your peers, or become a Peer Tutor to help other students. Stay tuned for enrollment/recruitment notices from CEDARS-CoPE.

HKU jargons

HKU students use a lot of jargons like "submarine", "superpass", etc. It would be interesting to learn some of them from your buddy.

Learning Spaces



The University provides the following learning spaces for students:

Chi Wah Learning Commons

The 6,000 m² Chi Wah Learning Commons (智華館) is located at the podium levels of the Centennial Campus. The facility, which spreads over three levels, is a technology-rich, shared or common space in which students, teachers and others can come together to interact, and participate in various kinds of activities held there. More information can be found at <<http://www.les.hku.hk/teaching-learning/learning-space/chi-wah-learning-commons>>.





University Libraries

The Libraries consists of the Main Library and six branch libraries, including the Dental, Tin Ka Ping Education, Fung Ping Shan, Lui Che Woo Law, Music, and Yu Chun Keung Medical Library. The Libraries provide a variety of spaces in support of different learning styles. A learning commons style facility located on Level 3 in the Main Library offers a variety of spaces suitable for reflective self-study and collaborative study.

For questions pertaining to library resources, facilities or services, please enquire via one of the following means:

Address: Information Counter (Level 3, Main Library)

Tel: (852) 3917-2203

WhatsApp-a-Librarian: (852) 5441-5441

E-mail: libis@hku.hk

For more information, please visit [<lib.hku.hk>](http://lib.hku.hk).



The Oval

The Oval is located on the first floor of Knowles Building. It is a common area surrounded by a number of classrooms. It has over 80 seats for self-study. There is uPrint service with three printers. With wireless (WiFi) connection, you can use your own laptop to print.



Address: 1/F, Knowles Building

Website: www.les.hku.hk/teaching-learning/learning-space/the-oval



The Curve

The Curve is another learning place located in the Main Campus for individuals. It is on the first floor and second floor of the K.K. Leung Building, next to four lecture theatres.

Address: 1/F and 2/F, K. K. Leung Building

Website: www.les.hku.hk/teaching-learning/learning-space/the-curve

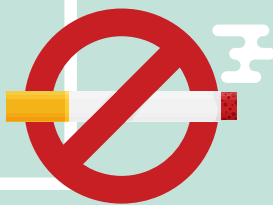
Common Core Lounge

Located in Room 150 on 1/F of the Main Building, the Common Core (CC) Lounge is a place for students and staff to hang out between classes or to use as a study or meeting space. It is also a place for showcasing students' exemplary projects and assignments in CC courses.

More information can be found at commoncore.hku.hk/2014/10/13/common-core-lounge.



Smoke-free Campus



HKU is a smoke-free campus. Smoking is not allowed on campus.

There is no official dress code in HKU. Students dress casually for lectures and tutorials most of the time. It is a norm for students to put on business attire for class presentations. Formal dress code is required for formal functions like "High Table Dinner", official ceremonies and special occasions. If you participate in competitions or sports games, you are expected to wear team uniforms.



Student Attire

Student Clubs



The Hong Kong University Students' Union (HKUSU)

HKU is renowned for its vibrant campus life. Students enjoy a high degree of autonomy. The Hong Kong University Students' Union (HKUSU) is the largest student body on campus. It is independent of the University administration and it runs its own Co-op store and photocopying centre on campus. It has more than 130 sub-organisations, each with distinctive objectives and functions, catering to the diverse interests of the student population. For the full list of student clubs and membership details, please refer to the HKUSU homepage at www.hkusu.org.

The Postgraduate Student Association (PGSA)



The theme “simple engagement, endless discoveries” brightens the colourful world of Postgraduate Student Association (PGSA). Established in 1993, PGSA of the HKU has been serving postgraduate students and alumni for 25 years. Postgraduate students can hone their skills and make new friends under the most welcoming atmosphere from the beginning of the postgraduate journey. For newcomers, PGSA presents an array of orientation programmes and welcoming events. Interested students are also welcome to join the executive committee.

PGSA aims to enhance postgraduate life in HKU through encouraging students’ active participation in various academic, social and professional events. It is also an independent unit in the University and an autonomous body like the HKUSU. PGSA is open to all HKU postgraduate students, whether full-time or part-time. Activities and events including inter-university basketball game, social party, high table dinner, recruitment fair, outdoor trips and lectures from special guests are held for all lifetime members.

It is noteworthy that voluntary works of different natures are also the missions and duties of PGSA. With support together from the HKU family and friends like you, it would be a fabulous chance to embrace the beautifulness and fruitfulness of postgraduate life.

Address: P408 Graduate House, No. 3 University Drive, The University of Hong Kong

E-mail: pgsa@hku.hk

Website: www.pgsa.hku.hk

WeChat: [hkupgsa](#)

Facebook: www.facebook.com/hkupgsa

The Chinese Students and Scholars Association at The University of Hong Kong (CSSA-HKU)

CSSA-HKU is a non-profit student organization run by Mainland Chinese students and scholars in HKU, as well as the sole organization officially registered to serve Mainland Chinese students and scholars on campus.

Through a wide range of activities tailor-made for Mainland students and scholars, CSSA-HKU seeks to provide an academic and social platform for its members to interact, as well as to offer them opportunities to get ahead in their career. Some of their most welcomed events include high table dinners (e.g. Orientation High Table Dinner, Lunar New Year High Table Dinner, Graduation High Table Dinner), Christmas Party, Cantonese class, Ocean Park tours, and recruitment talks partnered with a series of renowned enterprises and institutions from home and abroad.

Email: cssahku@hkucssa.com

Website: www.hkucssa.com

Wechat official account:



The Chinese Students and Scholars Association Undergraduate Department (CSSAUD)



Undergraduate students coming from Mainland China are invited to join the Chinese Students and Scholars Association Undergraduate Department (CSSAUD). Its prime objective is to provide support and enrich campus life for Mainlanders by organizing regular social activities. Some of the activities, especially orientation camp, singing contest, welfare week and graduation party, are well-received by members. Besides, CSSAUD will visit several main cities in China in July every year to meet newly admitted students and help them prepare for future university life. An information booklet in Chinese will be delivered during the time. This booklet covers all sorts of academic, recreational and daily life information related to HKU. More details can be found on the website at <www.cssaud.com>. You may also write to <cssaud@hku.hk> for tips before arrival.

In addition to the above student associations, non-local students may also like to join the following student societies.

International Society

Facebook: www.facebook.com/intlsoc

The International Society encourages students of all backgrounds, cultures, and nationalities to join its growing organization. This English-oriented student society promotes integration and internationalization amongst HKU students by coordinating a wide array of activities, ranging from recreational gatherings to academic seminars. Members of the International Society will not only receive premium networking opportunities that allow them to meet people from all over the world, but also be given the chance to collaborate and launch projects with their peers. The society also aims to serve as a platform for students from anywhere in the world to feel like they are at home - right here in HKU. You may contact the society at <hkuintlsoc@gmail.com> or visit the website at <www.hkuintlsoc.strikingly.com>.



Muslim Students Association-HKU

Facebook: www.facebook.com/MSAHKUSU

Others

A list of student clubs or associations is available at <www.cedars.hku.hk> (CEDARS Section→Campus Life→Societies and Activities→Links to Student Associations).



Student Sports and Recreation



At HKU, there is a broad range of health, fitness, sports, recreational facilities and programmes offered by the Centre for Sports and Exercise (CSE) to make your stay in Hong Kong a fun and healthy experience.

Sports fans can make use of the wide range of facilities at the Flora Ho & Lindsay Ride Sports Centres (indoors) on Pokfulam Road, the Stanley Ho Sports Centre (outdoors) in Sandy Bay, and the ACTIVE (Centennial Campus), a state-of-the-art fitness facility located in the Jockey Club Tower, designed to further promote health and fitness of the University community. You can find out more information of Centre for Sports and Exercise at <www.cse.hku.hk>.



Appendices

Dates of Semesters for 2018-2019


For the dates of semesters for 2018-2019, please check with your own Faculty.




























Please visit the website of the Examinations Office of the Registry at <www.exam.hku.hk> (University Examinations & Examination Timetables → University Examinations) for the assessment periods of the 2018-2019 academic year. You should make yourself available during the assessment periods to sit for the examinations of the courses that you have enrolled. The examination timetables are published 7 weeks before the start of each assessment period. **If you plan to leave before the end of the assessment period, you are highly recommended to confirm your return flights only AFTER your examination schedule has been released.**

Directory

Halls and Residential Colleges

Lady Ho Tung Hall 何東夫人紀念堂	🚩 91 Pokfulam Road 薄扶林道91號 ☎ (852) 3152 6500 ✉ lhthsa@hku.hk
Lee Hysan Hall 利希慎堂	🚩 6 Sassoon Road 沙宣道6號 ☎ (852) 2986 5110 ✉ lhhall@hku.hk
Lee Shau Kee Hall 李兆基堂	🚩 109 Pokfulam Road 薄扶林道109號 ☎ (852) 3604 2024 ✉ jockeyv2@hku.hk
Morrison Hall 馬禮遜堂	🚩 109 Pokfulam Road 薄扶林道109號 ☎ (852) 3604 2014 ✉ jockeyv2@hku.hk
R. C. Lee Hall 利銘澤堂	🚩 6 Sassoon Road 沙宣道6號 ☎ (852) 2986 5250 ✉ rclhall@hku.hk



Ricci Hall 利瑪竇宿舍	 93 Pokfulam Road 薄扶林道93號  (852) 2546 9201  riccihal@hku.hk
Simon K.Y. Lee Hall 李國賢堂	 Main Campus 薄扶林道本部校園  (852) 3917 0300  skyhall@hku.hk
St. John's College 聖約翰學院	 82 Pokfulam Road 薄扶林道82號  (852) 2817 7102  stjohns@hku.hk
Sterr Hall 施德堂	 91 Pokfulam Road 薄扶林道91號  (852) 3156 7568  starr@hku.hk
Suen Chi Sun Hall 孫志新堂	 109 Pokfulam Road 薄扶林道109號  (852) 3604 2034  jockeyv2@hku.hk
Swire Hall 太古堂	 Main Campus 薄扶林道本部校園  (852) 2105 6602  swwarden@hku.hk
University Hall 大學堂	 144 Pokfulam Road 薄扶林道144號  (852) 2550 6341  uhall@hku.hk
Wei Lun Hall 偉倫堂	 6 Sassoon Road 沙宣道6號  (852) 2986 5300  weilun@hku.hk
Residential Colleges 住宿學院	 9 Lung Wah Street 龍華街9號  (852) 3917 1419  jockeyv3@hku.hk <ul style="list-style-type: none"> • Shun Hing College 信興學院 • Chi Sun College 志新學院 • Lap-Chee College 立之學院 • New College 日新學院

Faculties and Schools

Faculty of Architecture 建築學院	www.arch.hku.hk (852) 2859 2149 faculty@arch.hku.hk
Faculty of Arts 文學院	arts.hku.hk (852) 3917 8977 arts@hku.hk
Faculty of Business and Economics 經濟及工商管理學院	www.fbe.hku.hk (852) 3917 5343 fbeinfo@hku.hk
Faculty of Dentistry 牙醫學院	facdent.hku.hk (852) 2859 0390 dental@hku.hk
Faculty of Education 教育學院	web.edu.hku.hk (852) 3917 6044 edfac@hku.hk
Faculty of Engineering 工程學院	engg.hku.hk (852) 3917 2803 enggfac@hku.hk
Faculty of Law 法律學院	www.law.hku.hk (852) 3917 2951 lawfac@hku.hk
Li Ka Shing Faculty of Medicine 李嘉誠醫學院	www.med.hku.hk (852) 3917 9175 medfac@hku.hk
Faculty of Science 理學院	www.scifac.hku.hk (852) 3917 2683 science@hku.hk
Faculty of Social Sciences 社會科學學院	www.socsc.hku.hk (852) 3917 1234 socsc@hku.hk
Graduate School 研究學院	www.gradsch.hku.hk (852) 2857 3470 gradsch@hku.hk

Other Offices

Academic Advising Office 學業指導處	aao.hku.hk (852) 3917 0128 aaoffice@hku.hk
Academic Services Office 學務辦公室	www.ase.hku.hk (852) 2859 2433 asoffice@hku.hk
Admissions Office 入學事務處	www.aal.hku.hk/admissions (852) 3917 5886 admissions@hku.hk Undergraduate admissions in general Undergraduate admissions for students from the Mainland prcua@hku.hk
Centre of Development and Resources for Students 學生發展及資源中心	cedars.hku.hk (852) 3917 2305 cedars@hku.hk
China Affairs Office 中國事務處	www.aal.hku.hk/cao chinaaff@hku.hk
Finance and Enterprises Office 財務及企業管理處	www.feo.hku.hk/finance (852) 3921 2895 finance-mail@hku.hk
International Affairs Office 國際事務處	www.aal.hku.hk/studyabroad (852) 2219 4549 exchange@hku.hk
University Health Service 大學醫療保健處	www.uhs.hku.hk (852) 3917 2501 uhealth@hku.hk

Useful Websites

The University of Hong Kong
 Hong Kong Immigration Department
 Hong Kong International Airport
 Hong Kong Transportation
 Hong Kong Tourism Board
 Study in Hong Kong

www.hku.hk
www.immd.gov.hk
www.hongkongairport.com
www.td.gov.hk
www.discoverhongkong.com
www.studyinhongkong.edu.hk

A map of HKU can be found at <www.maps.hku.hk>.



Non-local Students Profile



In 2017-18, we have non-local students from the following places (based on nationality):

Afghanistan	Hungary	Republic of Serbia
Angola	India	Romania
Argentina	Indonesia	Russia
Australia	Iran	Saudi Arabia
Austria	Ireland	Singapore
Azerbaijan	Israel	Slovakia
Bangladesh	Italy	Slovenia, Republic of
Belgium	Jamaica	South Africa
Benin	Japan	Spain
Bhutan	Kazakhstan, Republic	Sri Lanka
Brazil	Kenya	Sudan
Brunei	Korea, Republic of	Swaziland
Bulgaria Republic	Kuwait	Sweden
Cameroon	Lao People's DemoRep	Switzerland
Canada	Lithuania	Syria
Chile	Luxembourg	Taiwan
China	Macau, SAR of PRC	Tanzania
Colombia	Malaysia	Thailand
Costa Rica	Maldives	The Czech Republic
Croatia	Mauritius	Tunisia
Cyprus	Mexico	Turkey
Denmark	Mongolia	U.K.
Dominica	Morocco	U.S.A.
Dominican Republic	Myanmar	Ukraine
Ecuador	Nepal	United Arab Emirates
Egypt	Netherlands	Uruguay
Eritrea	New Zealand	Uzbekista
Estonia	Nigeria	Venezuela
Ethiopia	Norway	Vietnam
Finland	Pakistan	Virgin Islands
France	Panama	Zambia
Germany	Paraguay	Zimbabwe
Ghana	Peru	
Gibraltar	Philippines	
Greece	Poland	
Guatemala	Portugal	

Looking forward to
meeting you at HKU!

Pre-departure Checklist



Visa Formalities

You should have got your student visa label before you came to Hong Kong. When you cross the point of entry, please present the visa label / entry permit with your travel document at the immigration counter. A landing slip (which is your student visa) will be issued to you, and your student visa status will be activated. Please check the slip and make sure it contains "student-permitted to remain until (a date)" at the top. Please be advised to keep both the visa label / entry permit and landing slip, and do not lose them throughout your stay in Hong Kong.



Specimen of landing slip
from Hong Kong Immigration
Department for student visa
holders
(www.immd.gov.hk)



學生 - 批准逗留至 2014 年 12 月 28 日
Student-Permitted to remain
until 28 Dec 2014

或終止修讀課程日計四周內，以較
早日期為準
or four weeks after termination of studies,
whichever is earlier.

於以下院校就讀獲批准課程
Studying the approved course at
THE UNIVERSITY OF HONG KONG

未得入境事務處處長批准，不得
轉讀其他院校或其他課程
CHANGE TO ANOTHER EDUCATIONAL
INSTITUTION OR ANOTHER COURSE OF
STUDY WITHOUT APPROVAL OF THE
DIRECTOR OF IMMIGRATION IS NOT
PERMITTED

DORA, EXPLORER

證件號碼 Travel Document Number
AW12345678

入境日期 (日-月-年) Arrival Date(dd-mm-yyyy)
28-12-2013

APS>>USA>>R2X

You may need to come to CEDARS or China Affairs Office (CAO) to complete any outstanding visa matters upon arrival.



Housing

For those who have already got a hall place, please ensure that you have informed the hall office of your arrival time. For those arriving at odd hours, make sure you have made arrangements either with your buddy or the hall on your check-in procedures. You also need to purchase your own pillows and bed linens.

For those who have not secured accommodation yet, please check the private accommodation options on iMAP. CEDARS accommodation service can also help you look for private accommodation nearby and advise you on tenancy agreement and rights.

HKU Weeks of Welcome

This is a series of induction activities for newly arrived non-local students. The highlight of programme is Orientation Day for Non-local Students. You will receive an email inviting you to register for these programmes online or you can visit <www.cedars.hku.hk/wow> for details nearer the time.

Reception and Orientation

There is an array of orientation programmes run by various offices/student groups for new students. Information would be available on websites of the respective offices nearer the time. Check these out before you come. Some programmes allow online registration before your arrival.

Stay Connected

iMAP

Website: www.cedars.hku.hk/imap

Join HKU iMAP, our online social networking platform to start connecting with the University community before you come to Hong Kong. iMAP is exclusive for HKU members. Users have to log in with a HKU email account. Incoming non-local students will get a temporary account before they have their HKU email accounts. You will be notified of this about 2-3 weeks before the start of the term. If you have not received such an email, please contact CEDARS at <cedars@hku.hk>.



Others

- Arrange health/medical insurance if necessary (see p.34). You should make additional provision if necessary.
- For visiting and exchange students only: Confirm credit transfer arrangement with your own study abroad office. Make sure you know whether your home institution will give you credits for the classes that you complete at HKU.

Useful Links

- Adjustment Tips for Non-local Students: www.cedars.hku.hk/tips4nonlocal
- FAQ Videos on Successful University Life: www.cedars.hku.hk/faq
- Registration dates and student card collection details: www.ase.hku.hk
- Curriculum structure and information: aao.hku.hk
- Student services and support: www.cedars.hku.hk
- Counselling services: www.cedars.hku.hk/cope
- Special Educational Needs (SEN) Support: www.cedars.hku.hk/cope/SEN

Upon Arrival

Read "Guide for Newcomers" (an on-line guidebook containing handy information to facilitate your settling in): www.cedars.hku.hk (Publications)

What documents should I bring?

We recommend that you carry the following documents with you. To be safe, make photocopies of them.

- a valid passport or travel documents
- a student visa (you have to present your visa label / entry permit at the immigration counter upon arrival)
- an original letter of Offer of Admission from The University of Hong Kong
- proof of funds available (e.g. bank draft, transfer of funds, credit, scholarship or other) and/or credit cards such as Visa, MasterCard
- address and telephone number of where you are going
- your medical records, immunisation records and academic records
- documents with details of your insurance policy (if any) issued in your home country
- for those who are married, marriage certificate if your spouse is accompanying you
- a passport photo for hall registration
- a proof of your permanent address in your own country (e.g. original bank statements of the past 2 months in English, driving license)

What should I pack?

Clothes & Bedding

- You can expect sunny, bright and cool weather during winter, and occasional mist and showers from March to mid-May, so a shower proof jacket is desirable.
- There is no heating system in Hong Kong and some winter days can be very cold. You may consider bringing a quilt and a cold resistant jacket for the cooler days or alternatively buy one in Hong Kong.
- Linen and pillows are not provided in halls. You can get these items easily in the nearby markets of HKU campus. Some halls will lend you these items for the first few days.

Dictionary

Cantonese is the main language spoken among local students, but students are competent in speaking good English and all classes are conducted in English. However, you may expect some of the general public cannot speak good English. Bring along a good bilingual dictionary if you need one.

Electrical equipment

Electrical equipment you bring should be compatible with Hong Kong's voltage, which is 220 volts, 50Hz. The plug being used in Hong Kong has 3 pins in rectangular shape (British style socket).

Food

- Hong Kong is a cosmopolitan city. You will be able to find most, if not all, types of cuisine here.
- In case your flight arrives late at night, you may have difficulties locating a restaurant or catering outlet. You are advised to pack some light snacks such as biscuits or energy bars in your hand carry luggage.





Mobile phones

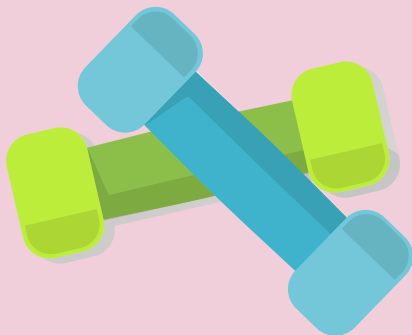
Most of the world's mobile telecommunications systems operate in Hong Kong, including GSM 900, PCS 1800, LTE, CDMA and WCDMA (2G, 3G and 4G) networks. There are a wide range of packages offered by different service providers in the market. Alternatively, you can also bring your handset and purchase a local pre-paid SIM card for use in Hong Kong. For information on Wi-Fi service in Hong Kong, please see <www.discoverhongkong.com>.

Sports goods/music instrument

If you wish to participate in student sports teams or any other student clubs, you may wish to bring along your personal equipment or instrument.

Study tools

Computer facilities are available on campus and in halls. You may, however, wish to bring along your own laptop for use inside your room. Most of the campus areas and all halls have wireless network coverage for registered students. You can also connect to the Gigabit Ethernet via LAN port in your room at hall.



Note

.....

.....

.....

.....

.....

.....

.....

.....

.....

.....

.....

.....

.....

.....

.....

.....

.....

.....

.....

.....

.....

.....

.....

.....

.....

.....

.....

.....

.....

.....



Telling the Taxi Driver to Go to Your Student Residence



If you take a taxi to your student residence, you may show the Chinese instructions below to the driver.

Going to Graduate House

From Robinson Road to Conduit Road. Turn right onto University Drive. Follow the direction of the arrows to the drop off point.

To go to the residential block, enter Graduate House through the entrance on Level P1.

司機先生：請你載我到香港大學 本部校園的研究生堂
請經羅便臣道至干德道入口進入校園。前往位於大學道之落客區下車。
前往宿舍人士請使用位於P1層的入口。

Going to Lady Ho Tung Hall / Starr Hall / Ricci Hall

Option 1

If you are coming to Lady Ho Tung / Starr Hall / Ricci Hall by taxi from Central / Hong Kong MTR station and you do not have lots of luggage, please pass the following message to the taxi driver.

Please go on the Pokfulam Road in the direction to Aberdeen. Pass the Haking Wong Building of HKU, and stop at the bus stop opposite to the Belcher's.

Get off the taxi and cross the road. You will see the Jockey Club Student Village I.

司機先生：請你載我到薄扶林道91號香港大學的何東夫人紀念堂宿舍 /
施德堂宿舍 / 利瑪竇宿舍
請沿薄扶林道往香港仔方向行駛，過了香港大學 黃克競樓後下一個巴士站，即寶翠園對面的巴士站下車。



Option 2

If you have lots of luggages and do not mind giving HKD10-20 more, please pass the following message to the taxi driver.

Please go on the Pokfulam Road in the direction to Aberdeen. U-turn at Pokfield Road bus terminal and turn in the direction to the Belcher's. Turn left soon after passing the Pokfulam Electricity Zone Sub-station and into the HKU Halls area. Turn right and into the HKU Jockey Club Student Village I.

司機先生：請你載我到薄扶林道91號香港大學的何東夫人紀念堂宿舍 / 施德堂宿舍 / 利瑪竇宿舍
請沿薄扶林道往香港仔方向行駛，到浦飛路巴士總站回轉，向寶翠園方向行駛，在寶翠園前的學生宿舍轉入，再轉右，駛入香港大學 賽馬會第一舍堂村。(請留意舍堂村入口在薄扶林分區電力站前)。

Going to Lee Hysan Hall / R.C. Lee Hall / Wei Lun Hall

Please go on Pokfulam Road in the direction to Queen Mary Hospital. At the traffic lights in front of the hospital, turn right down to Sassoon Road and immediately right turn to the access road leading to the student halls.

司機先生：請你載我到沙宣道6 號香港大學的利希慎堂宿舍 / 利銘澤堂宿舍 / 偉倫堂宿舍
請沿薄扶林道往瑪麗醫院方向行駛，至醫院前交通燈處，右轉落沙宣道，隨即於右手面第一個路口轉上學生宿舍。

Going to Morrison Hall / Suen Chi Sun Hall / Lee Shau Kee Hall

Take taxi from Airport Express Station in Central or Shun Tak Center in Sheung Wan: Please go on Pokfulam Road in direction to Queen Mary Hospital. Turn left at the first traffic light following Fulham Garden (located at 84 Pokfulam Road). Make a U turn at the parking meters outside a park. Turn right at the traffic light and keep on left lane in direction to Central. Turn left at the private road beyond the Flora Ho Sports Centre but before Pokfield Road. The halls are in front of the roundabout.

司機先生：請你載我到薄扶林道109 號香港大學的馬禮遜堂宿舍 / 孫志新堂宿舍 / 李兆基堂宿舍
請沿薄扶林道往瑪麗醫院方向行駛，過了富林花園(位於薄扶林道84號)第一個燈位左轉入公園小路，在公園外咪標位回轉出小路，在路口燈位轉右向中環方向靠左線行駛，經過何世光夫人體育中心，並於浦飛路口前左轉入私家路直達宿舍 (私家路入口處有一個大黑色匾牌)。



Going to Pokfield Road Residences

Starting from Sai Ying Pun, stay on the left lane when going on Pokfulam Road in direction to Queen Mary Hospital. Make a right turn to Pokfield Road at the traffic lights after Sinopec Gasoline Station (next to Pokfield Road Bus Terminus). Go downslope along Pokfield Road and the Residences are at the first left turn.

司機先生：請你載我到蒲飛路13號香港大學的蒲飛路學生宿舍
請從西營盤沿薄扶林道往瑪麗醫院方向靠左線行駛，經過中石化油站（蒲飛路巴士總站旁）後的交通燈位轉右入蒲飛路，沿蒲飛路往下走左邊第一個路口直達宿舍。

Going to HKU Residential Colleges (Jockey Club Student Village III)

Please go on Connaught Road West in the direction to Kennedy Town. Continue onto Shing Sai Road. Then turn right onto Sands Street. Stay on the right lane and turn right onto Rock Hill Street. Make a left turn at the end to Smithfield Road. Then go uphill along Smithfield Road and pass Pokfield Road. After PCCW Kennedy Town Telephone Exchange, make a right turn onto Lung Wah Street and the HKU Residential Colleges is on your left in front of the Kwun Lung Lau.

司機先生：請你載我到龍華街9號香港大學的住宿學院（於堅尼地城觀龍樓前面）
請沿干諾道西向西行到城西道，沿城西道左轉入山市街，靠右行駛，直行到尾轉入石山街，繼續走到尾左轉入士美菲路，沿士美菲路往上走經過蒲飛路路口，在電訊盈科堅尼地城電話機房後的第一個路口轉右入龍華街繼續駛往觀龍樓方向，香港大學的住宿學院在左邊。

Going to Simon K. Y. Lee Hall

Go on Pokfulam Road via the Western District Police Station in the direction to Aberdeen. Turn right and go up to the flyover when you enter the west gate of the HKU (opposite to Chiu Sheung Secondary School, Hong Kong). Then, stop your taxi at the loading point adjacent to the multi-storey car park of the Union Building.

司機先生：請你載我到香港大學本部校園的李國賢堂宿舍
請沿薄扶林道經西區警署前往香港仔方向，至香港大學西閘入口（潮商中學對面）轉右上天橋，至學生會大樓多層停車場之上落貨處下車。

(P.S. Students are advised to use the lift inside the car park from CP1 to Ground Floor. Turn right when you take off the lift & you will find the entrance of the Hall when you reach the Ground Floor of the Union building.)

(同學可利用多層停車場內的升降機，由CP1乘搭至G層，出升降機後進入學生會大樓地下，便見宿舍入口。)



Going to St. John's College

Go on Pokfulam Road in the direction to Queen Mary Hospital. Stay on the left side of the road after passing the Pokfield Road bus terminal for another 30 meters, turn left at the car park entrance of the College (will go pass the main entrance of the College on the way; opposite to the Flora Ho Sports Centre). Go straight up and stop at the car park.

司機先生：請你載我到薄扶林道82號香港大學的聖約翰學院學生宿舍
請沿薄扶林道往瑪麗醫院方向，過了浦飛路巴士總站，靠左向前行三十米左右，在學院車場路口左轉(沿路經過學院大門，位於何世光夫人體育中心對面)，直上停車場。

Going to Swire Hall

Go on Pokfulam Road via the Western District Police Station in the direction to Aberdeen. Turn left when you enter the west gate of the HKU (opposite to Chiu Sheung Secondary School, Hong Kong). After entering the gate, turn right at the first corner and then turn left. Go straight and you will see the Knowles Building and K.K. Leung Building on your right. Turn left before the flyover and stop at the car park in front of Swire Building.

司機先生：請你載我到香港大學 本部校園的太古堂宿舍
請沿西營盤 西區警署(七號差館)旁，上薄扶林道往香港仔方向，到了潮商中學對面之香港大學西邊入口，轉左按票入閘口，隨即轉右後靠左，到鈕魯斯樓再直去，至梁銑鋸樓前的天橋口轉左，在太古樓停車場停下。

(P.S. Students are advised to use the lift inside the Fong Shu Chuen Amenities Centre from GA to L Floor of Swire Hall. Please use the inter-com on the wall opposite to the lift by pressing 10 and then "Enter" button.)

(學生可使用方樹泉文娛中心內的電梯，由地下至太古堂入口，請使用電梯對面之內線電話，按10字再按 "Enter")。

Going to University Hall

Go on Pokfulam Road in the direction to Aberdeen. Turn left at the first corner after the second traffic light beyond Queen Mary Hospital (At this corner, there is a sign showing 142-144, and on the left there is pay-phone booth). Go straight up. Turn right at the security kiosk. University Hall is the light green castle in front of you.

司機先生：請你載我到薄扶林道144 號香港大學的大學堂宿舍
請沿薄扶林道往香港仔方向，過了瑪麗醫院第二個燈位後第一個路口左轉，(該路口有142 及 144 號門牌，左邊有一個電話亭) 沿路直上，見保安亭右轉，大學堂停車場停下。



Going to University-rented Off-campus Housing - On Hing Building

Go on Des Voeux Road West in the direction to Sai Ying Pun. After passing Ramada Hong Kong Hotel, stop in front of the 7-11 Convenience Store at the traffic lights at Water Street.

司機先生：請你載我到德輔道西326-332號安慶樓
請沿德輔道西往西營盤方向行駛，過了香港華美達酒店，到水街交通燈位、7-11便利店前下車。

Going to Ching Lin Terrace Residence

Please go on Connaught Road West in the direction to Kennedy Town. Continue onto Shing Sai Road. Then turn right onto Sands Street. Stay on the left lane and stop in front of the elevator once arrive Rock Hill Street.
(You need to get off here, take the elevator to go up and then walk up to Ching Lin Terrace Residence for about 5-10 minutes.)

司機先生：請你載我到堅尼地城山市街-石山道交界
請沿干諾道西向西行到城西道，沿城西道左轉入山市街，靠左行駛，直行到石山街口的升降機前停車。
(同學需要在此下車，乘升降機往上，再往上走5-10分鐘到青蓮台宿舍。)





cedars
Centre of Development and Resources for Students
The University of Hong Kong
香港大學學生發展及資源中心