



SCHOOL OF
COMPUTING &
DATA SCIENCE
The University of Hong Kong

Academic Advising System

School of Computing and Data Science (CDS)

The University of Hong Kong (HKU)

GROUP
ADVISING

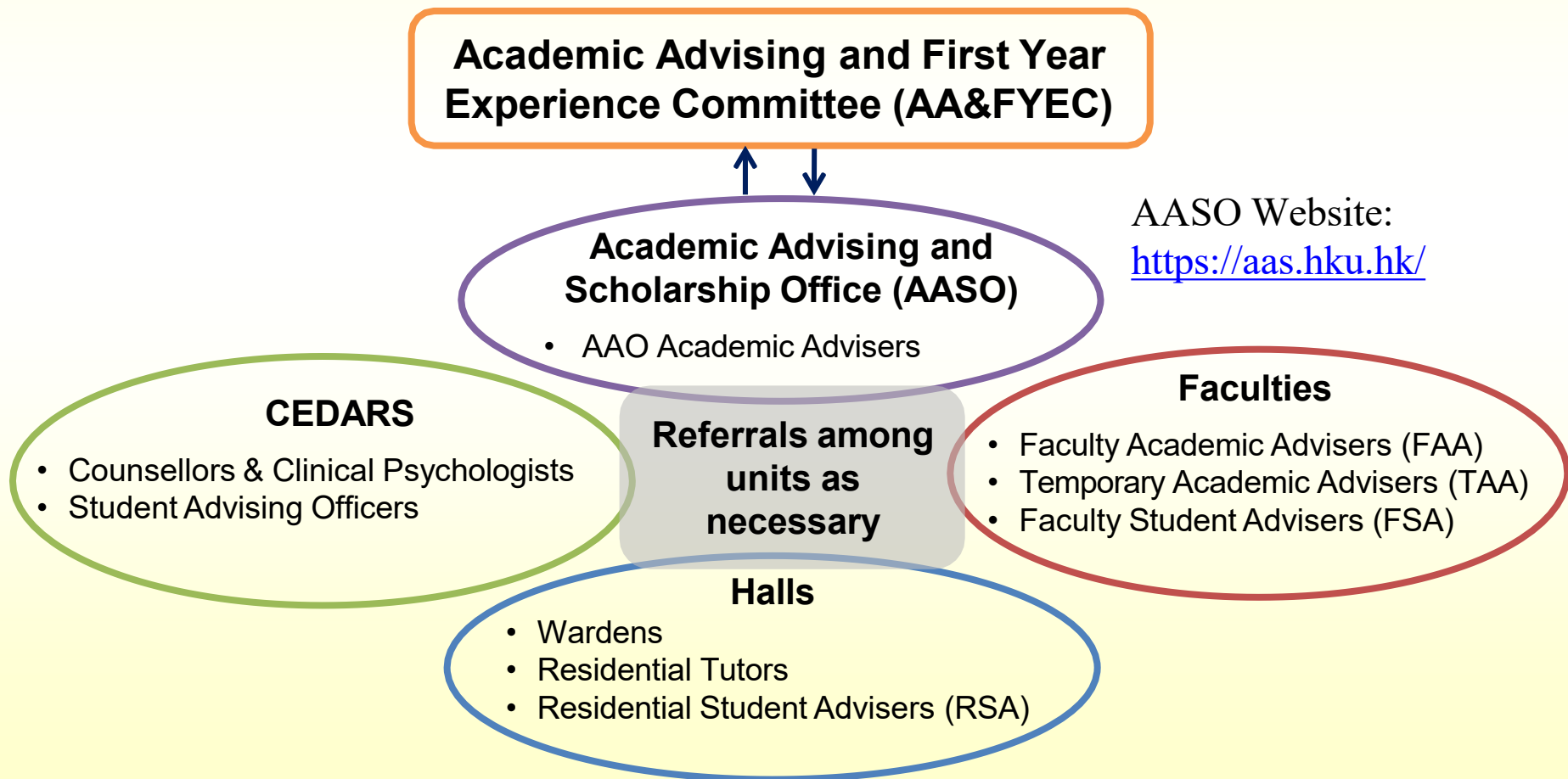


ACADEMIC
ADVISING
HKU · SCDS

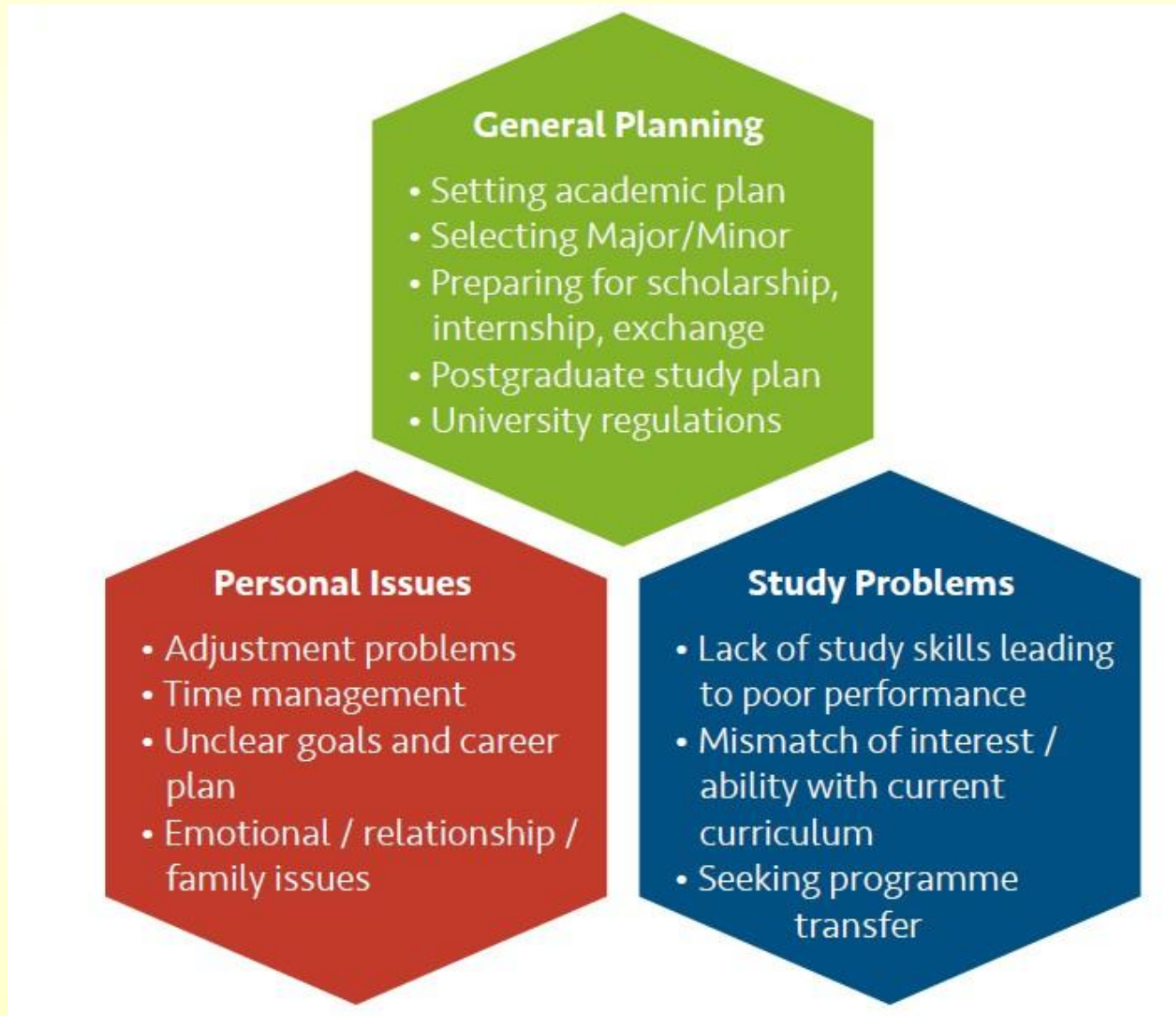


Academic Advising System in HKU

- The University-wide Academic Advising System, which is overseen by the Academic Advising and First Year Experience Committee (AA&FYEC), is the joint effort of the Academic Advising and Scholarships Office (AASO), Centre of Development and Resources for Students (CEDARS), Faculties and Schools, as well as Residential Halls.



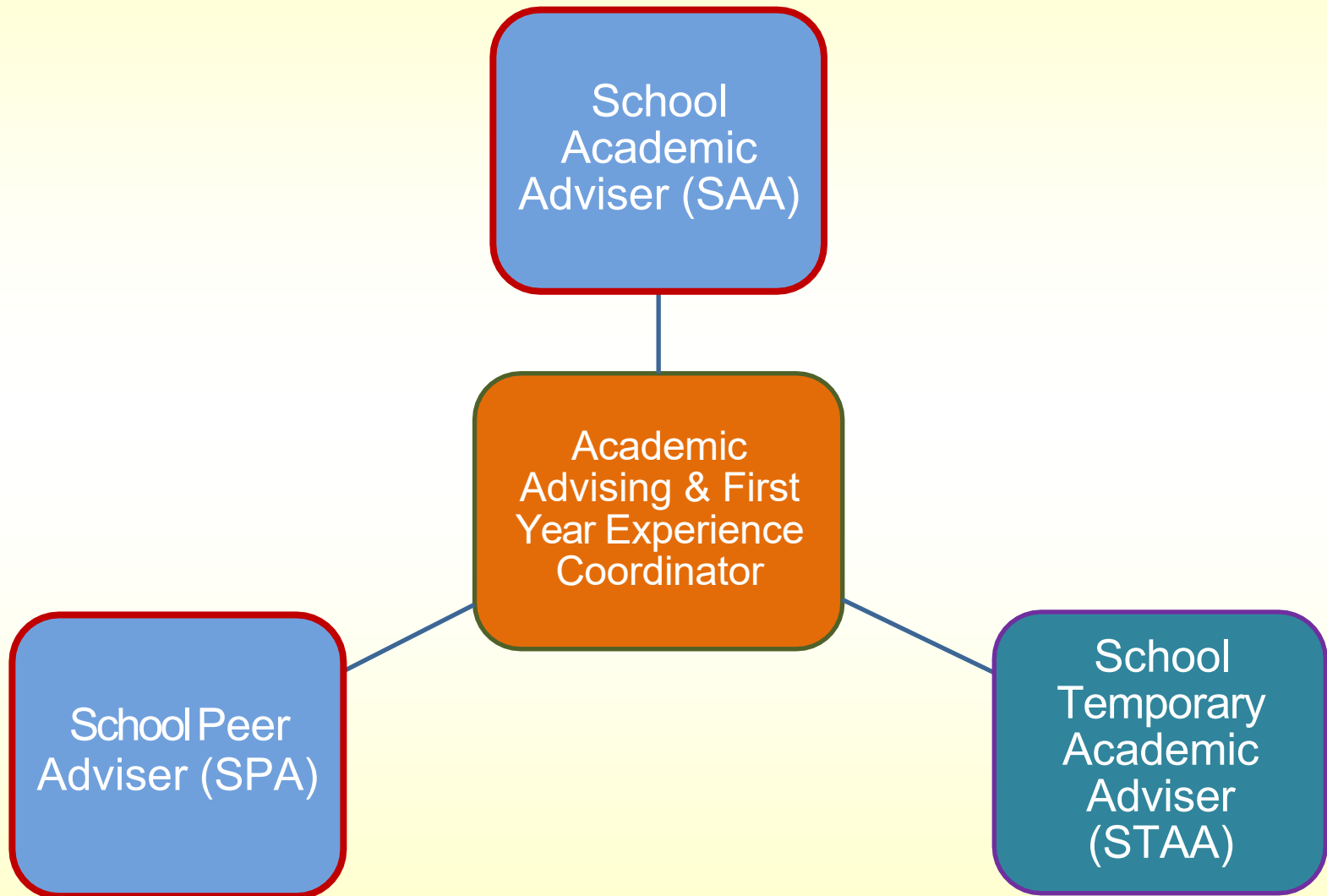
Students seek advice on various matters



Common Academic Concerns of First Year Students

- Course selection
- Academic goal and study plan
- Adjustment to the University learning styles
- Curriculum structure of study programme(s)
- Selection of major / minor programmes
- Other matters such as
 - ❖ Common Core courses, planning for exchange, management of study load, balance between study and extra-curricular activities, etc.

SCDS Academic Advising System



School Academic Adviser (SAA)

- Each new student will be assigned a **School Academic Adviser (SAA)**, who is a teacher in the School of Computing and Data Science.
- SAAs will offer advice and guidance to students on **academic matters** such as
 - ❖ course selection and enrollment, professional core selection, learning opportunities, career planning, etc.
- Students are highly encouraged to consult their SAA's advice before course enrollment period, and **at least once per every semester** during the first year of studies.

Sign-up for School Academic Adviser (SAA)

- You will be invited to select directly from the list of School Academic Advisers on a first-come-first-served basis.
- Sign-up for your SAA from 2:00pm, August 11, 2025 (Monday) to 10:00am, August 19, 2025 (Tuesday) at <https://ugaa.hku.hk/signup-faa.php>
- If you do not sign up by August 19, 2025, the System will randomly assign one to you.
- There is another round of sign-up for your SAA if you are late-comers, from 2:00pm, August 20, 2025 (Wednesday) to 10:00am, August 26, 2025 (Tuesday).
- If you do not sign up by August 26, 2025, the System will randomly assign one to you.
- For details, please refer to the email from School Office.

Sign-up for School Academic Adviser (SAA)

- To find your adviser from the Student Information System (SIS):
 - ❖ Login to HKU Portal
 - ❖ On “My Page”, click “Find your adviser” on the right-hand side (see the screen capture below)

The screenshot displays the HKU Portal Student Center. The top navigation bar includes the HKU logo, the text 'HKU PORTAL THE UNIVERSITY OF HONG KONG', the last login time 'Last Login: MAY 20 2020 15:42:34 (HKT)', and the temperature '28°C'. Below this is a green banner with the text 'Student Center'. The main content area is divided into several sections. On the left, there is a sidebar with a 'My Page' button and a list of links including 'Self Services', 'Enrollment', and 'Academics'. The 'Academics' section is currently selected, showing a search bar and a dropdown menu. The main content area is divided into three tabs: 'Deadlines', 'URL', and 'Gradebook'. The 'Deadlines' tab is active, showing a table for 'This Week's Schedule' with columns for 'Class' and 'Schedule'. Below this is a table for 'Student Enrollment' with columns for 'Term', 'Class', 'Schedule', 'Action', 'Progress Units', and 'Credit Units'. The 'Find your adviser' link is highlighted in a red box on the right side of the page.

HKU PORTAL
THE UNIVERSITY OF HONG KONG

Last Login: MAY 20 2020 15:42:34 (HKT)

28°C

Student Center

My Page MyEmail My eLearning MyLibrary Events MyFaculty

Self Services
Student Center
Request Temporary Adviser
Master Registration
Change Contact Information
Student Card Document Upload
Report Lost/ Damaged Card
Guide to Reveal SIS Me Links
HKU Event Calendar

Enrollment
Declare Major/Minor /Special.
Course Information
Course Effectiveness Profile
Enrollment Add Classes
Enrollment Drop Class
Enrollment Status
Common Core Enrollment Status
My Weekly Schedule
My Course History
Class Timetable

Academics

Search
Plan
Enroll
My Academics

other academic... >>

Deadlines URL Gradebook

This Week's Schedule

Class	Schedule
	Room TBA
	Room TBA

Student Enrollment

Term	Class	Schedule	Action	Progress Units	Credit Units
1 2019-20 Sem 1		Mo 3:30PM - 5:20PM Rm 8.66, Run Run Shaw Tower Mo 3:30PM - 5:20PM Rm 8.66, Run Run Shaw Tower	Not Approved	6.00	6.00
2 2019-20 Sem 1		Mo 9:30AM - 12:20PM MB217 Mo 9:30AM - 12:20PM	Not Approved	6.00	6.00

Search for Classes

Holds
No Holds.

Adviser
Find your adviser

Other Links
Guidelines and Forms HKUSU

School Peer Adviser (SPA)

- Each new student will be assigned a **School Peer Adviser (SPA)**.
- They are students in the School of Computing and Data Science who are appointed and trained to serve as **student advisers**, helping first-year students adjust to the university's studying and living environment.



Sign-up for School Peer Adviser (SPA)

- Same as the Sign-up procedure for School Academic Adviser (SAA).
- You will be invited to select directly from the list of School Peer Advisers on a first-come-first-served basis.
- Sign-up for your SPA from 2:00pm, August 11, 2025 (Monday) to 10:00am, August 19, 2025 (Tuesday) at <https://ugaa.hku.hk/signup-faa.php>
- If you do not sign up by August 19, 2025, the System will randomly assign one to you.
- There is another round of sign-up for your SPA if you are late-comers, from 2:00pm, August 20, 2025 (Wednesday) to 10:00am, August 26, 2025 (Tuesday).
- If you do not sign up by August 26, 2025, the System will randomly assign one to you.
- For details, please refer to the email from School Office.